

# Beamever

## LINIO NEON 3D

IP67 protection with high  
performance silicone, UV  
resistant, solvents resistant.  
Twisted linear line.

One BIN Only to ensure perfect  
color consistency



Beamever

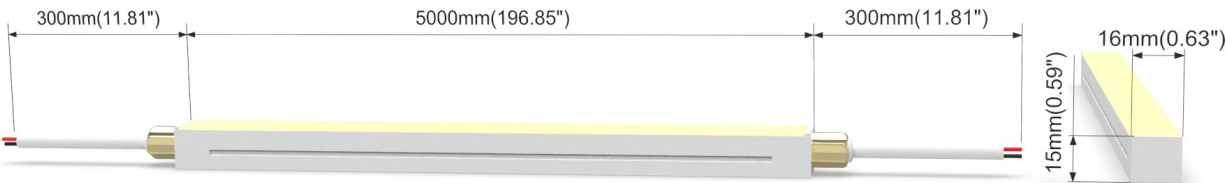
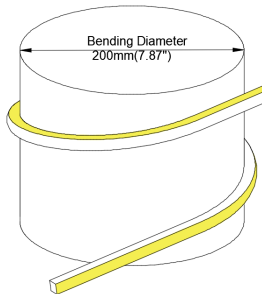


LINIO NEON 3D

- Top bend and side bend combined into one to create 3D space with radius of 100mm/ 3.94".
- DC24V, cross section size 16mmx15mm/0.63" x 0.59" (WxH).
- IP67 protection with high performance silicone, UV resistant, solvents resistant.
- 5M/reel maximum. Max. Run length refers to single side feed in serial connection.
- Easy to be cut and reconnected at project sites.Custom length are available as well.
- Wide color temperature range to meet different lighting needs.

Product Benefits:

- Homogeneous light effect & high light efficiency.
- Extremely durability and flexibility thanks to high performance materials.
- Not just good-looking but also weatherproof.



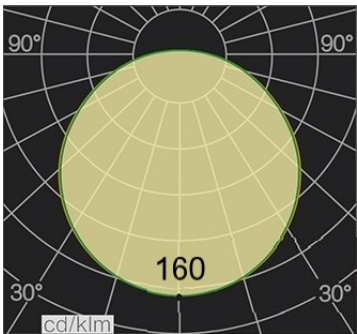
Electrical data

Voltage	DC24V (23.5V <sub>min</sub> 24.5V <sub>max</sub> )
LED PIN Temperature	Max. 65°C /149°F
Storage Temperature	-25°C /-13°F <sub>min</sub> 60°C /140°F <sub>max</sub>
Min. Ambient Tempt.(Ta <sub>min</sub> )	-25°C /-13°F
Max. Ambient Tempt.(Ta <sub>max</sub> )	45°C /113°F@10W
Power(W/m W/ft)	10/3.1
CRI	Ra93
Unit Cut	50mm

LM/M	10W
2700K	692
3000K	703
3500K	711
4000K	720
5000K	736
Max. Run Length(M)	5

Important notice

- The given data are typical values due to the tolerances of the production process and the electrical components, values for light output and electrical power can vary up to 10%.
- The given color temperature is neon flex (after extrusion) color temperature.
- Standard cable length is 30cm, if longer cable required, please contact us.
- Male and female connectors are available if needed.
- It is IK08 rated. Please use protection materials if it is walk over application.



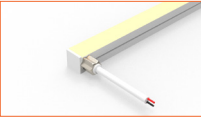
Order code

SERIES NAME	COLOR	LENGTH	POWER	CABLE ENTRY
LN3D	27= 2700K	05000=5M/196.85"	010=10W	F=FRONT
	30= 3000K			
	35= 3500K			
	40= 4000K			
	50=5000K			

Eg: LN3D-27-05000-010-F: LINIO NEON 3D 2700K, 5M/reel,10W/M, front cable entry.



**Front Cable Entry**  
Suitable for power feed in or straight connection. Do not bend down or aside too sharp.



**Side Cable Entry**  
It can achieve perfect seamless light connection if the cabling space is allowed on the side.

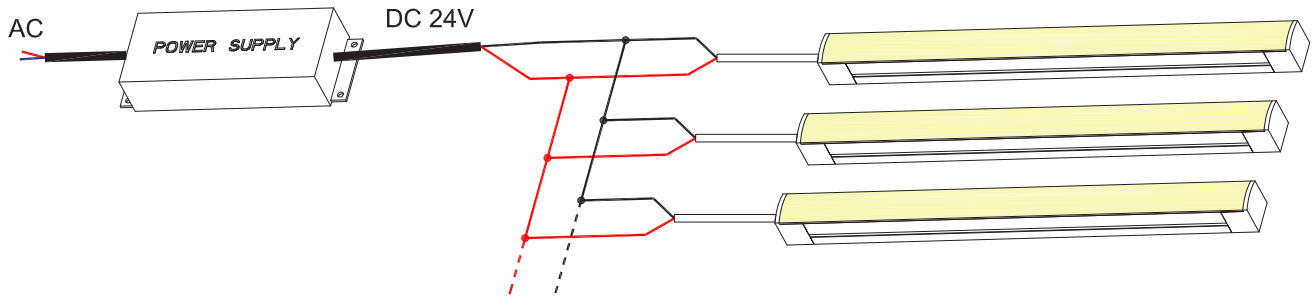


**Bottom Cable Entry**  
It can achieve perfect seamless light connection if the cabling space is allowed from the bottom.

Accessories

Art.#	Description	Picture	Art.#	Description	Picture
SC001	1m anodized aluminium channel for LINIO NEON 3D		MF012	Male and female connectors, 30cm IP67, 2PIN	
BC001	Clips 20mm 316L (Clip required every 25cm, stainless steel)		MF013	Extension connectors, 1m IP67, 2PIN	
M0002	Clips 20mm 316L (Clip required every 25cm, stainless steel)		MF014	Extension connectors, 5m IP67, 2PIN	
E0002	End cap with 30cm cable 2PIN for LINIO NEON 3D		XLG-150-24-A	PSU 24V/150W IP67, Non-dimmable, White, 100-305V supply	
E0003	Closed end cap for LINIO NEON 3D		ELG-150-24B	PSU 24V/150W IP67, 3 in 1 dimming function, White, 100-305V supply	
G0002	Silicone glue		ELG-150-24DA	PSU 24V/150W IP67, DALI control technology, White, 100-305V supply	

Wiring connection



Application

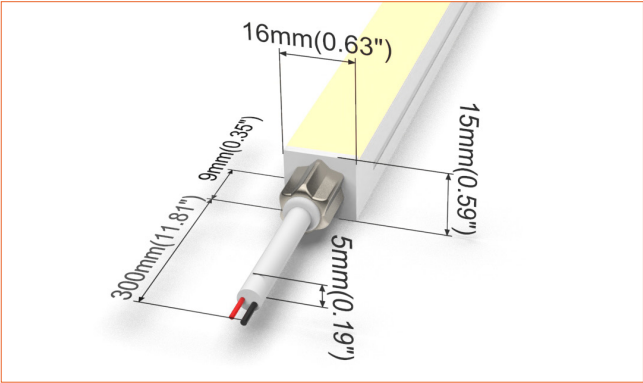
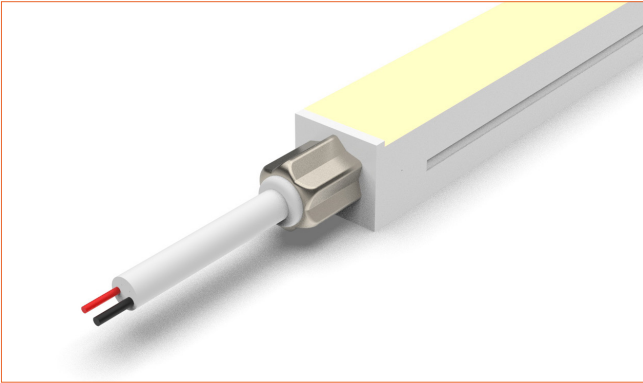


Where to use the product?

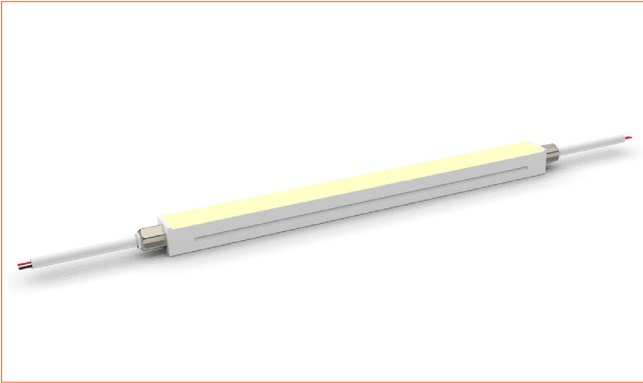
LINIO NEON 3D is a neon flex product that could be twisted or one neon flex can be bent vertically and horizontally, which provides you with design-able freedom which never had before. An extremely flexible and cuttable Neon flex, it offers you diffused light without visible spots, allowing you free to follow your light inspiration and create all kinds of shaped lighting easily.

It is a fantastic product for architectural lighting, facade accent lighting, landscape lighting.....Why not bring your project to light with this wonderful product?

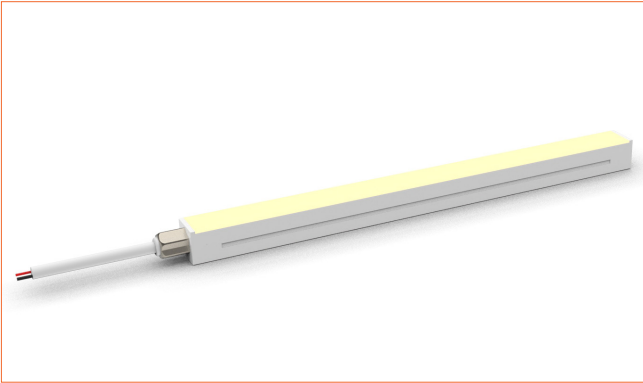
Front Cable Entry  
Suitable for power feed in or straight connection. Do not bend down or aside too sharp.



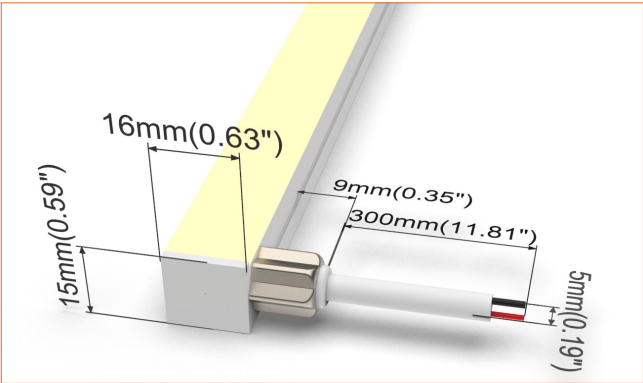
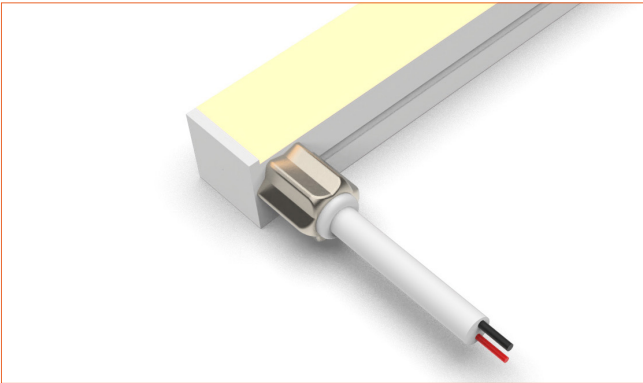
Front double wire end: 30cm cable from two ends, front cable entry.



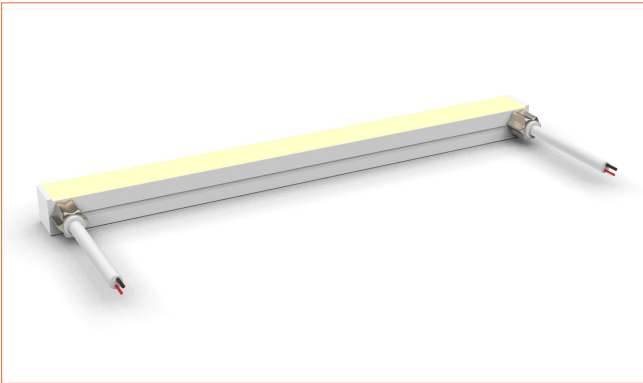
Front single wire end: 30cm cable from one end, front cable entry.



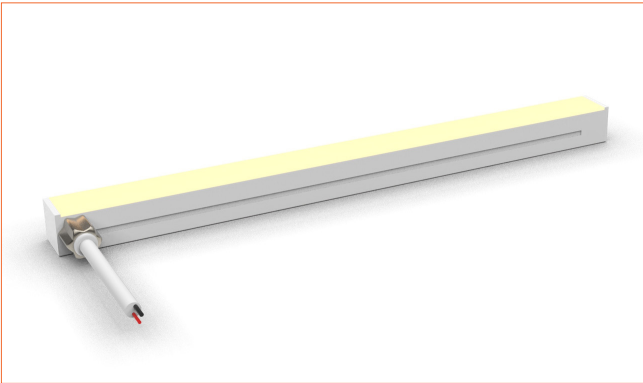
Side Cable Entry  
It can achieve perfect seamless light connection if the cabling space is allowed on the side.



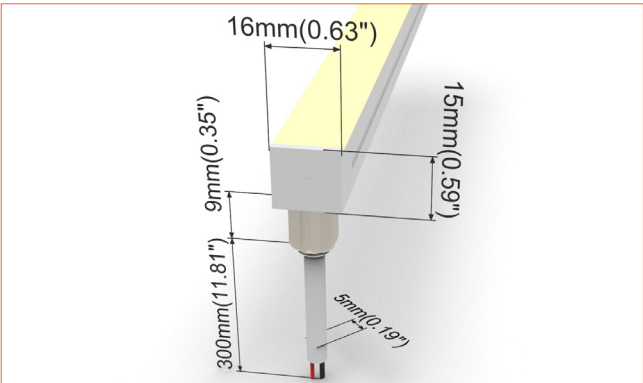
Side double wire end: 30cm cable from two ends, side cable entry.



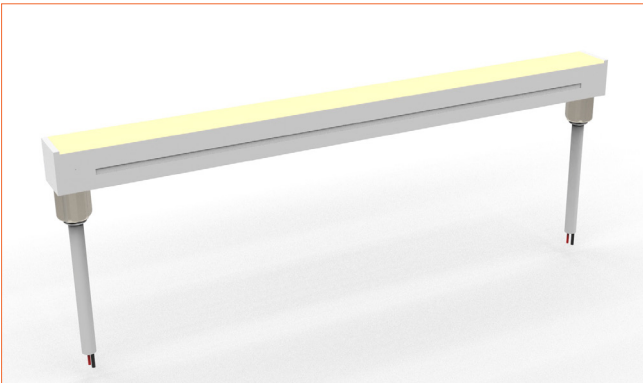
Side single wire end: 30cm cable from left one only (side cable entry), other end with closed end cap.



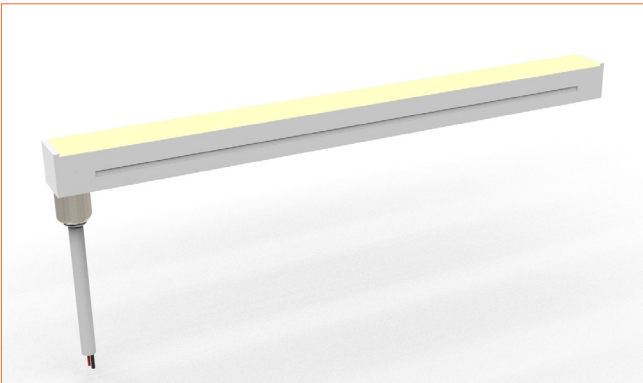
Bottom Cable Entry  
It can achieve perfect seamless light connection if the cabling space is allowed from the bottom.



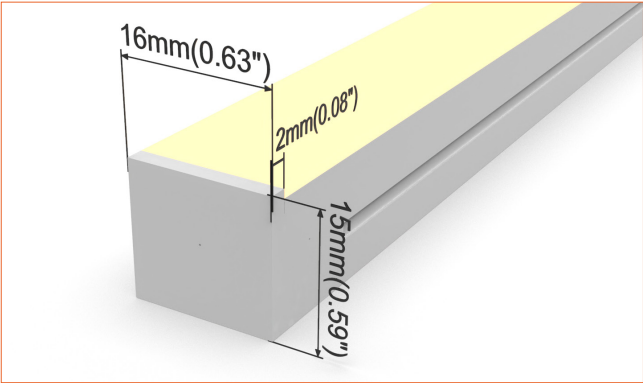
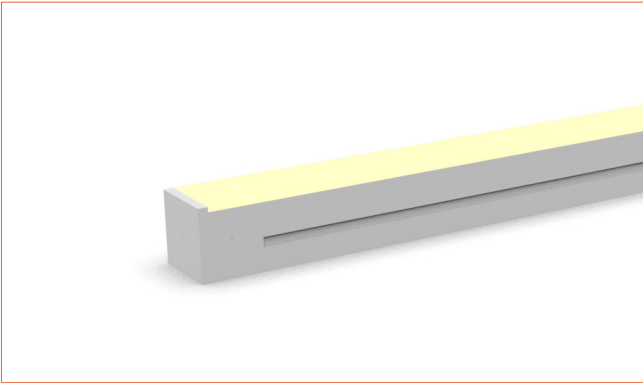
Bottom double wire end: 30cm cable from two ends, bottom cable entry.



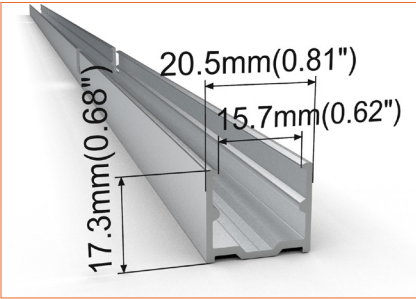
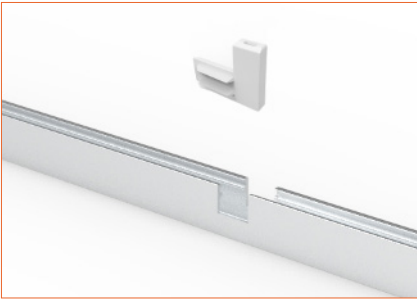
Bottom single wire end: 30cm cable from left one only (bottom cable entry), other end with closed end cap.



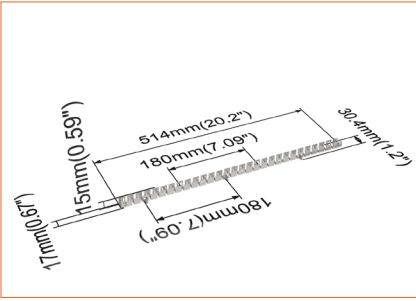
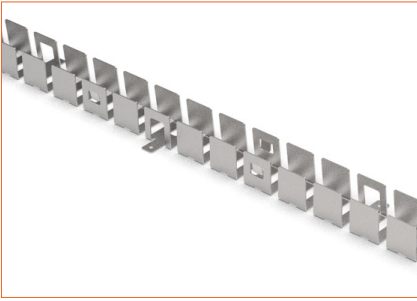
Closed end cap  
Elegant injecting closed end cap in same size as neon flex body.



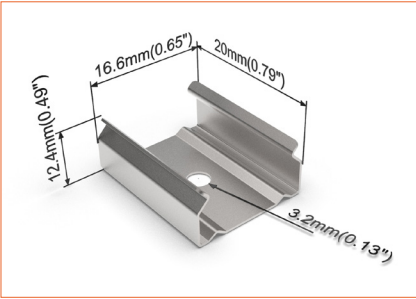
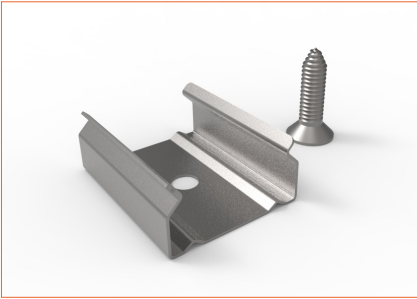




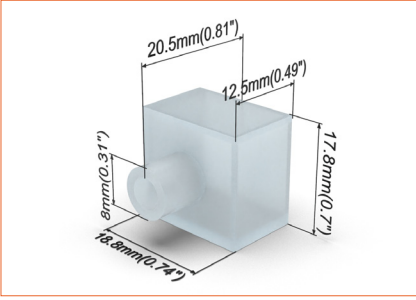
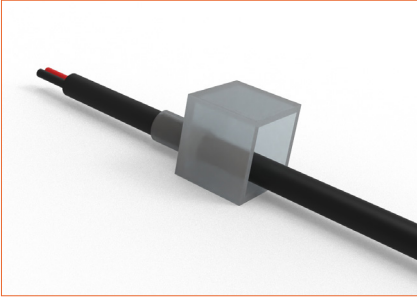
SC001  
Straight aluminium channel  
Length 1mtr



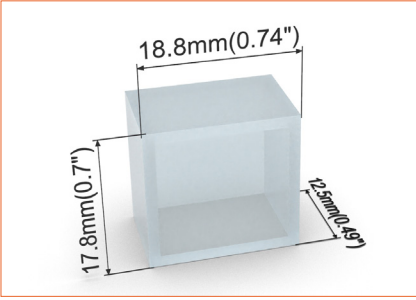
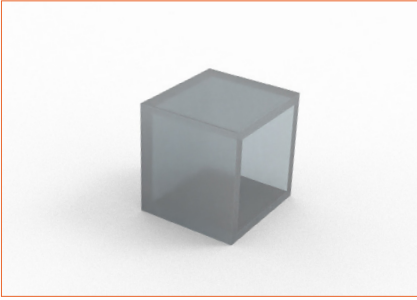
BC001  
Bendable stainless steel channel  
Length 0.5mtr



M0002  
Stainless steel mounting clip



E0002  
End cap with 30cm cable



E0003  
Closed end cap