

# Beamever

## LINIO NEON I615 TV RGBW

IP67 protection with high  
performance silicone, UV  
resistant, solvents resistant.  
Seamless line in 30Mtrs roll.

One BIN Only to ensure perfect  
color consistency



Beamever

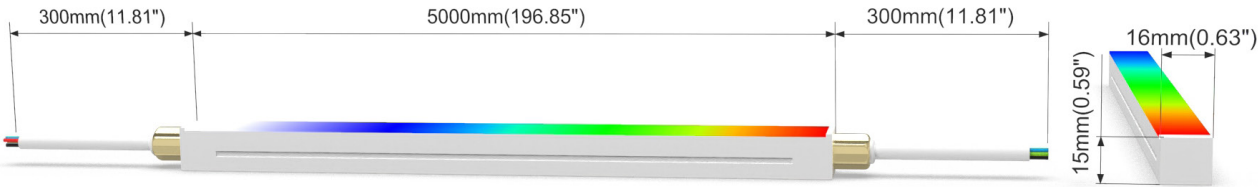
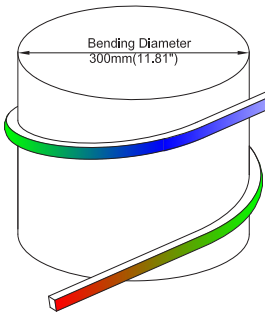


LINIO NEON 1615 TV RGBW

- Top view, and vertical bending with radius of 150mm/5.9".
- DC24V, and cross section size with 16mm x 15mm /0.63" x 0.59" (WxH).
- IP67 protection, high-end quality of silicone, UV resistant, and solvents resistant.
- 30m/reel(98.43ft/reel) maximum. And the custom length is available as customized service.
- Max. run length refers to single side feed in serial connection.
- Super flexible, reconnectable, and cuttable to satisfy various needs in lighting projects.
- Let you to create bolder and more vivid colors than with RGB alone.

Product Benefits:

- Homogeneous and very gorgeous luminance 24/7 provides to you.
- Super durable of long-term application to save cost.
- Well-designed, exclusive as architectural lighting consideration.



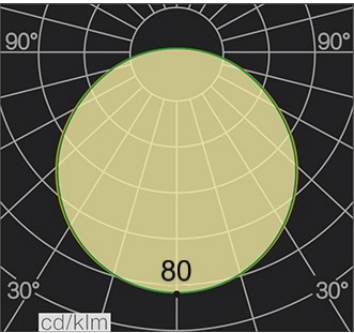
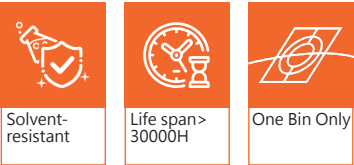
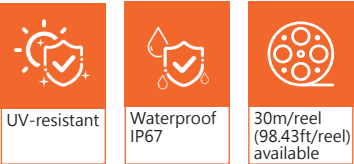
Electrical data

Voltage	DC24V (23.5V <sub>min</sub> 24.5V <sub>max</sub> )
LED PIN Temperature	Max. 65°C /149°F
Storage Temperature	-25°C /-13°F <sub>min</sub> 60°C /140°F <sub>max</sub>
Ambient Temperature	Ta <sub>min</sub> = -25°C /-13°F; Ta <sub>max</sub> = 35°C /95°F@4.57W Ta <sub>max</sub> = 55°C /131°F@1.14W(Single Color)
Power(W/ft)	4.57
Efficacy (lm/W)	35lm/W@RGBW40 4.57W

CCT	Lumen/ft	Max. Watt (W/ft)	Max. Run Length (ft)	Cut Increments (inch)
R	19	1.14	32.80	4.92
G	59	1.14	32.80	4.92
B	17	1.14	32.80	4.92
W27	63	1.14	32.80	4.92
W40	67	1.14	32.80	4.92
W53	63	1.14	32.80	4.92
RGBW40	162	4.57	32.80	4.92

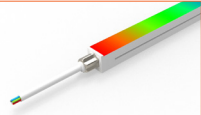
Important notice

- The given data are typical values due to the tolerances of the production process and the electrical components, values for light output and electrical power can vary up to 10%.
- The given color temperature is neon flex (after extrusion) color temperature.
- Standard cable length is 30cm/11.81", if longer cable required, please contact us.
- Male and female connectors are available if needed.
- It is IK08 rated. Please use protection materials if it is walk over application.

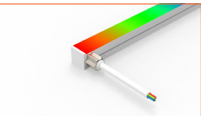


Order code

SERIES NAME	COLOR	LENGTH	POWER	CABLE ENTRY
LN1615TV RGBW	27= 2700K	4.92"-1181.10"	457=4.57W	F=FRONT
	40= 4000K			S=SIDE
	53= 5300K			B=BOTTOM



**Front Cable Entry**  
Suitable for power feed in or straight connection. Do not bend down or aside too sharp.



**Side Cable Entry**  
It can achieve perfect seamless light connection if the cabling space is allowed on the side.



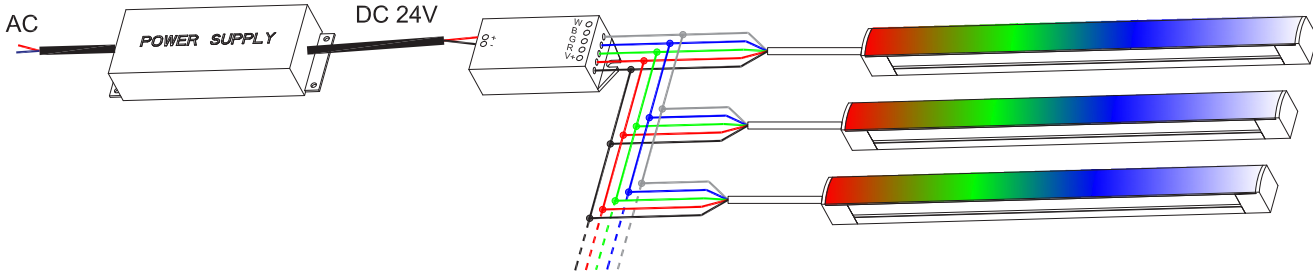
**Bottom Cable Entry**  
It can achieve perfect seamless light connection if the cabling space is allowed from the bottom.

Example: LN1615TV RGBW40-98.43-457-S: LINIO NEON 1615 TV RGBW, W=4000K, 98.43"/reel, 4.57W/ft, Side cable entry.

Accessories

Art.#	Description	Picture	Art.#	Description	Picture
SC001	1m/3.28ft anodized aluminium channel for LINIO NEON 1615 TV		MF021	Male and female connectors, 30cm/11.81" IP67, 5PIN	
BC001	0.5m/1.64ft bendable stainless steel channel		MF022	Extension connectors, 1m/3.28ft IP67, 5PIN	
M0002	Stainless steel clip		MF023	Extension connectors, 5m/16.40ft IP67, 5PIN	
E0006	End cap with 30cm/11.81" cable 5PIN for LINIO NEON 1615 TV (Front / side /bottom cable entry)		XLG-150-24-A	PSU 24V/150W IP67, Non-dimmable, White, 100-305V supply	
E0003	Closed end cap for LINIO NEON 1615 TV		ELG-150-24B	PSU 24V/150W IP67, 3 in 1 dimming function, White, 100-305V supply	
G0002	Silicone glue		M4+M4-3A	RF Controller 288W DC24V, 3A*4Channel, Max 12A IP20, Support remote control	

Wiring connection



Application



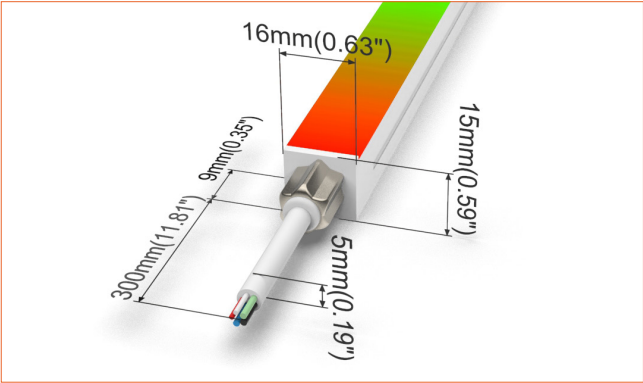
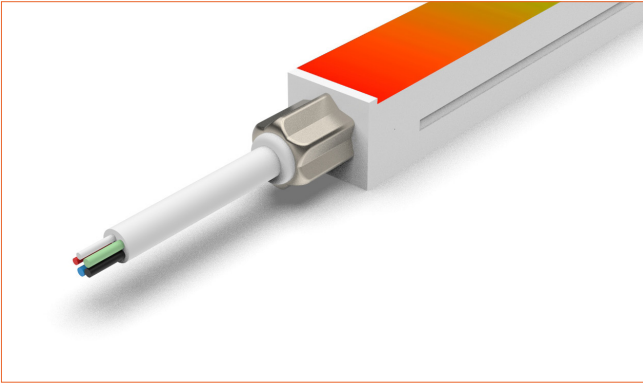
Where to use the product?

LINIO NEON 1615 TV RGBW with DMX512 control system to manipulate different colors, you can explore more coloring options to beautify each of your stunning projects.

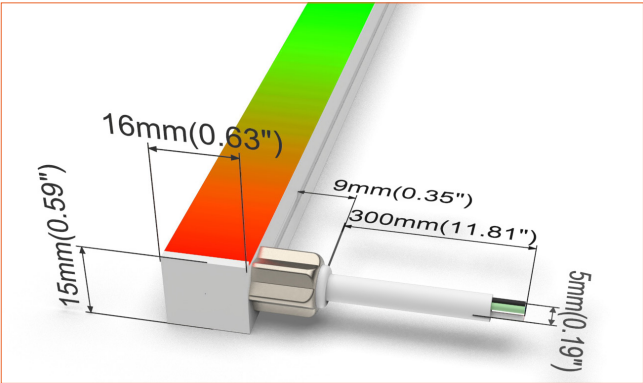
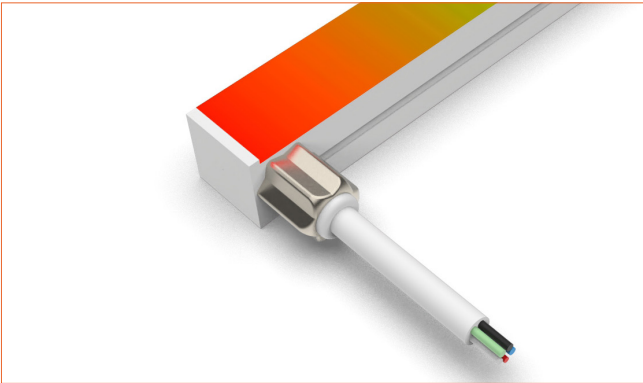
Apply it in any space, such as a small coffee shop in Paris to enhance the atmosphere of relaxation to enjoy coffee. People will love to stay longer and enjoy the time within this coffee shop.



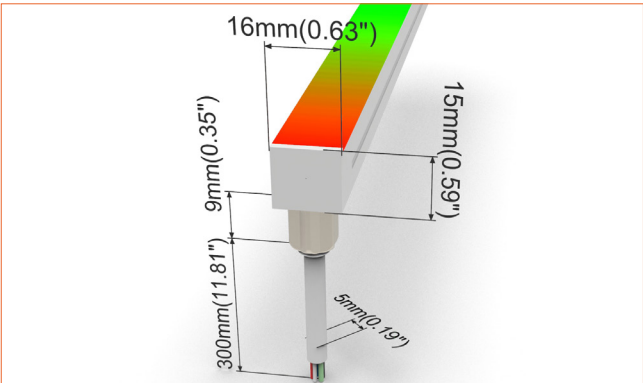
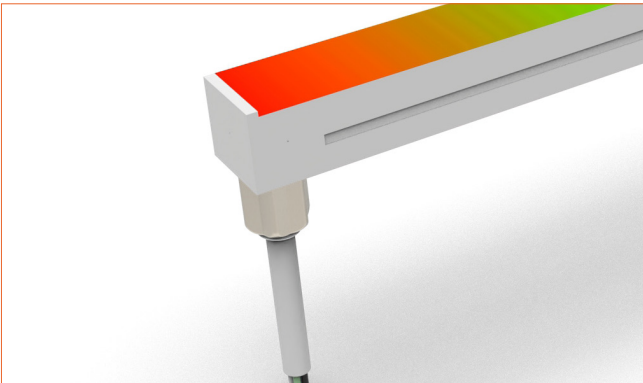
Front Cable Entry  
Suitable for power feed in or straight connection. Do not bend down or aside too sharp.



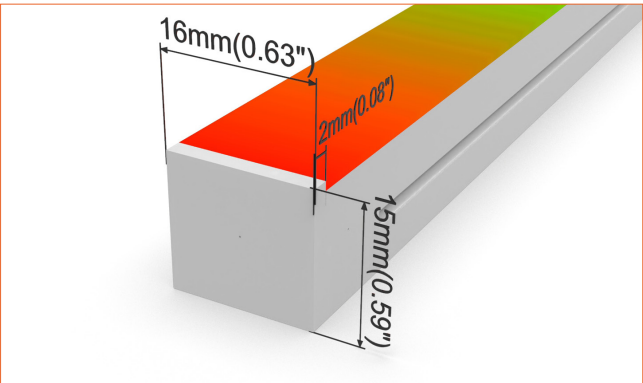
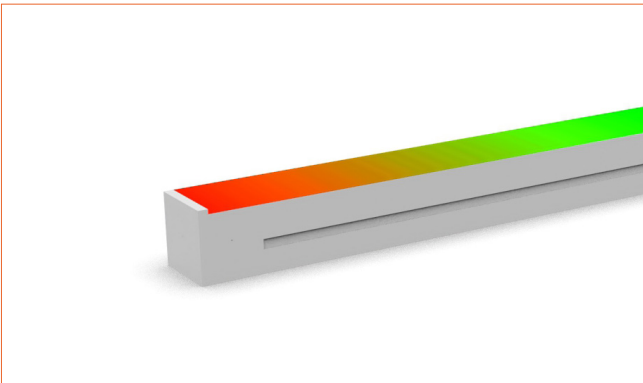
Side Cable Entry  
It can achieve perfect seamless light connection if the cabling space is allowed on the side.



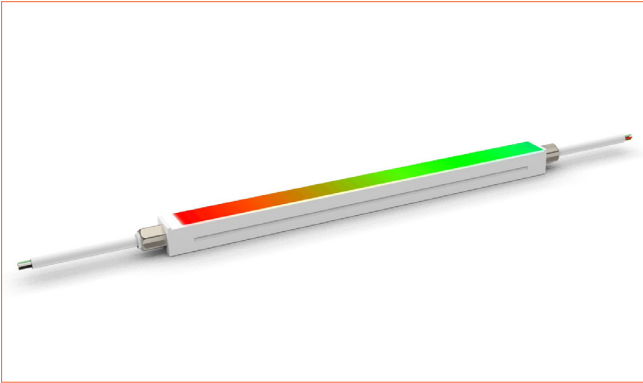
Bottom Cable Entry  
It can achieve perfect seamless light connection if the cabling space is allowed from the bottom.



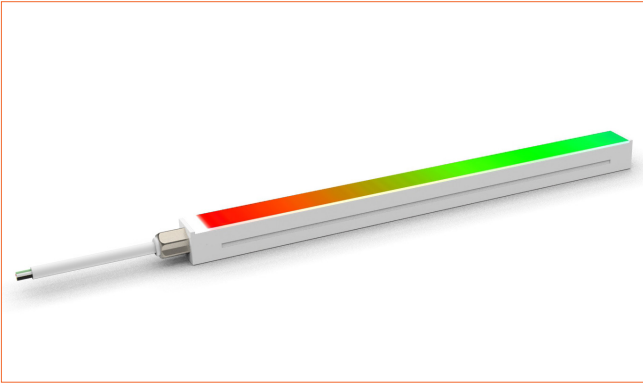
Closed end cap  
Elegant injecting closed end cap in same size as neon flex body.



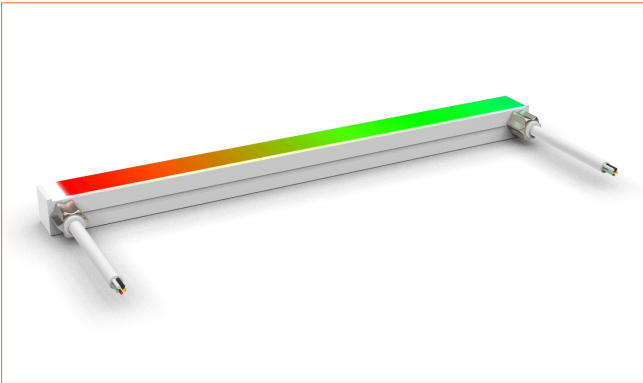
Front double wire end: 30cm/11.81" cable from two ends, front cable entry.



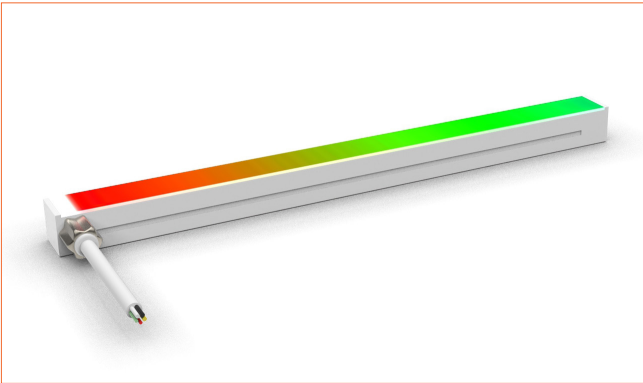
Front single wire end: 30cm/11.81" cable from one end, front cable entry.



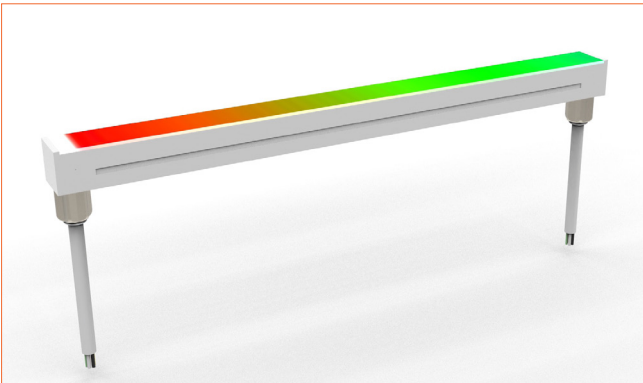
Side double wire end: 30cm/11.81" cable from two ends, side cable entry.



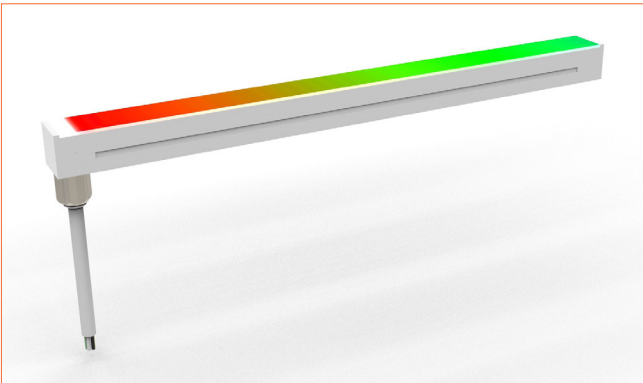
Side single wire end: 30cm/11.81" cable from left one only (side cable entry), other end with closed end cap.



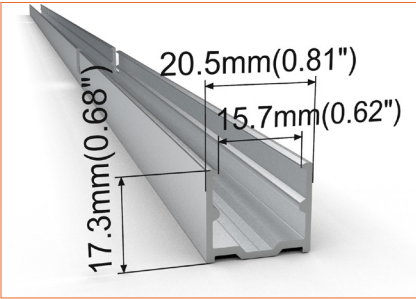
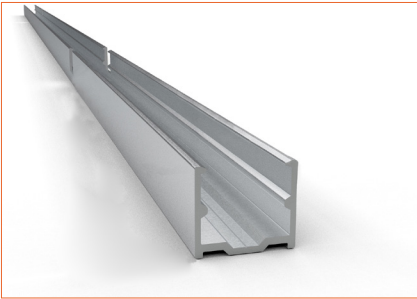
Bottom double wire end: 30cm/11.81" cable from two ends, bottom cable entry.



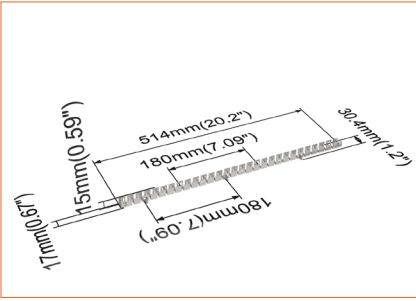
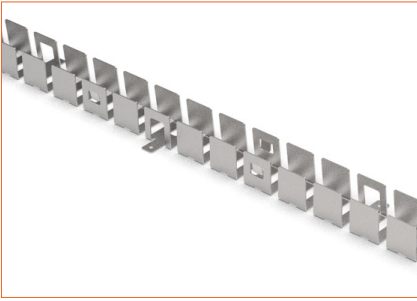
Bottom single wire end: 30cm/11.81" cable from left one only (bottom cable entry), other end with closed end cap.



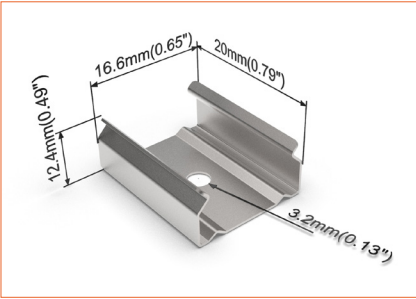
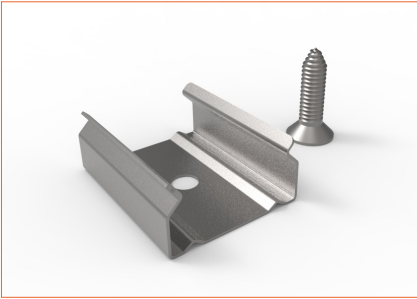




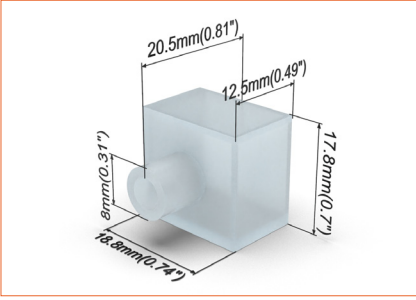
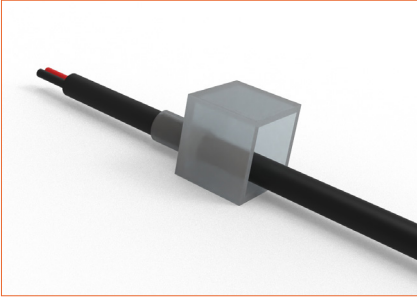
SC001  
Straight aluminium channel  
Length 1mtr/3.28ft



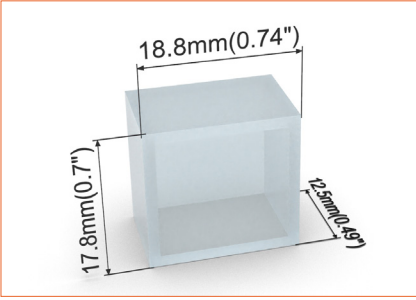
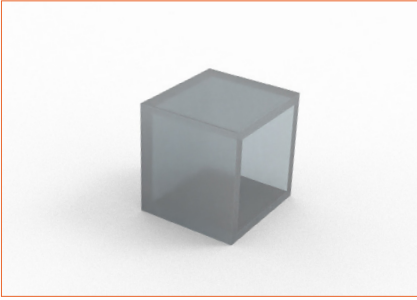
BC001  
Bendable stainless steel channel  
Length 0.5mtr/1.64ft



M0002  
Stainless steel mounting clip



E0006  
End cap with 30cm/11.81" cable



E0003  
Closed end cap