

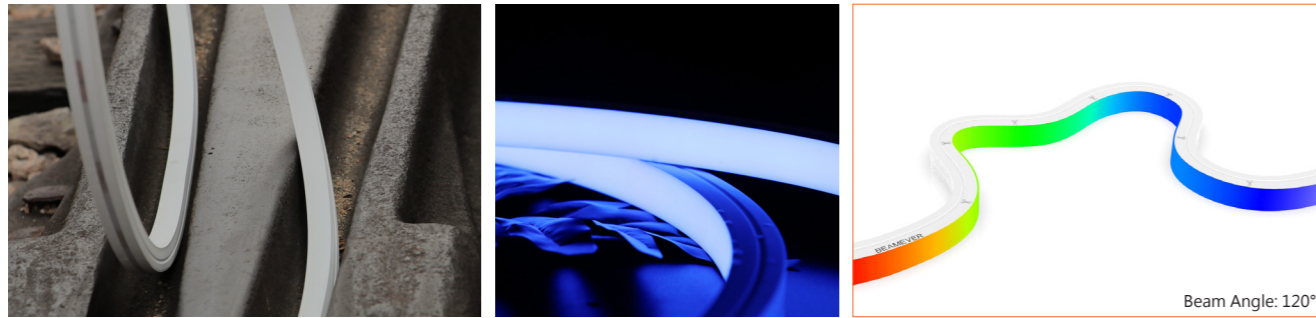
# Beamever

## LINIO NEON 1615 TV RGB

IP67 protection with high performance silicone, UV resistant, solvents resistant. Seamless line in 30Mtrs roll.

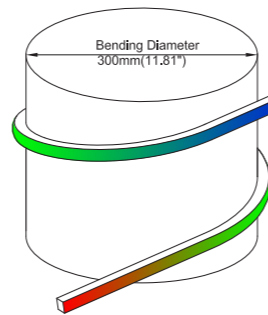
One BIN Only to ensure perfect color consistency





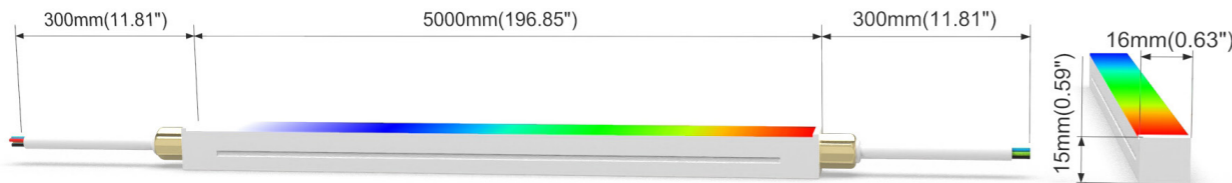
## LINIO NEON 1615 TV RGB

- Top view, and vertical bending with radius of 150mm/5.9".
- DC24V, and cross section size with 16mm x 15mm /0.63" x 0.59" (WxH).
- IP67 protection, high-end quality of silicone, UV resistant, and solvents resistant.
- 30m/reel(98.43ft/reel) maximum. And the custom length is available as customized service.
- Max. run length refers to single side feed in serial connection.
- Offer millions of colors using red-green-blue color mixing.
- Super flexible, reconnectable, and cuttable to satisfy various needs in lighting projects.



### Product Benefits:

- Homogeneous and very gorgeous luminance 24/7 provides to you.
- Super durable of long-term application to save cost.
- Well-designed, exclusive as architectural lighting consideration.

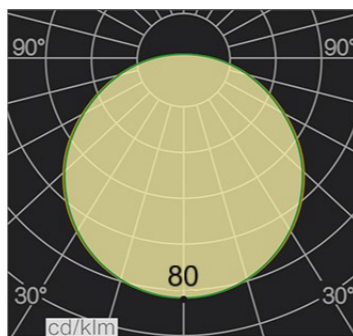


### Electrical data

Voltage	DC24V (23.5V <sub>min</sub> , 24.5V <sub>max</sub> )
LED PIN Temperature	Max. 65°C /149°F
Storage Temperature	-25°C /-13°F <sub>min</sub> , 60°C /140°F <sub>max</sub>
Ambient Temperature	Ta <sub>min</sub> = -25°C /-13°F; Ta <sub>max</sub> = 35°C /95°F@3.35W Ta <sub>max</sub> = 50°C /122°F@1.13W(Single Color)
Power(W/ft)	3.35
Efficacy (lm/W)	29lm/W@RGB 3.35W



CCT	Lumen/ft	Max. Watt (W/ft)	Max. Run Length (ft)	Cut Increments (inch)
R	17	1.13	42.64	4.92
G	49	1.13	42.64	4.92
B	11	1.13	42.64	4.92
RGB	80	3.35	42.64	4.92



### Important notice

- The given data are typical values due to the tolerances of the production process and the electrical components, values for light output and electrical power can vary up to 10%.
- The given color temperature is neon flex (after extrusion) color temperature.
- Standard cable length is 30cm/11.81", if longer cable required, please contact us.
- Male and female connectors are available if needed.
- It is IK08 rated. Please use protection materials if it is walk over application.



### Order code

SERIES NAME	COLOR	LENGTH	POWER	CABLE ENTRY
LN1615TV RGB	RGB	4.92"-1181.10"	335=3.35W	F=FRONT S=SIDE B=BOTTOM



**Front Cable Entry**  
Suitable for power feed in or straight connection. Do not bend down or aside too sharp.



**Side Cable Entry**  
It can achieve perfect seamless light connection if the cabling space is allowed on the side.



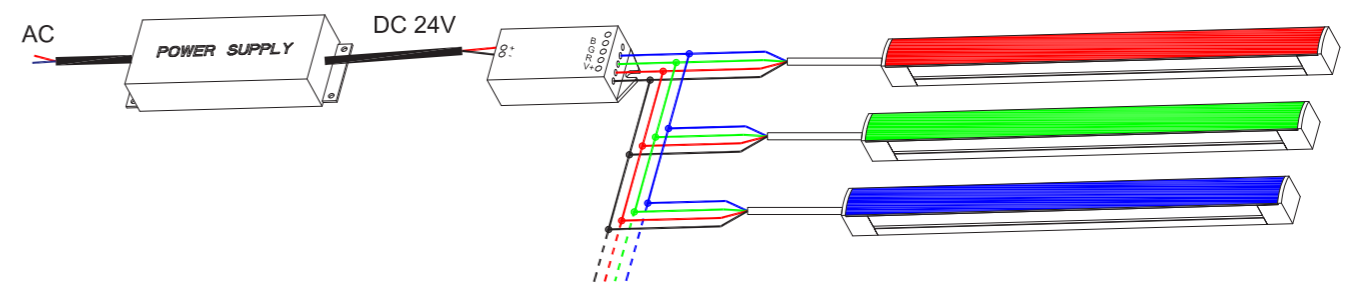
**Bottom Cable Entry**  
It can achieve perfect seamless light connection if the cabling space is allowed from the bottom.

Example: LN1615TV RGB-196.85-335-F: LINIO NEON 1615 TV RGB , 196.85"/reel, 3.35W/ft, Front cable entry.

### Accessories

Art.#	Description	Picture	Art.#	Description	Picture
SC001	1m/3.28ft anodized aluminium channel for LINIO NEON 1615 TV		MF018	Male and female connectors, 30cm/11.81" IP67, 4PIN	
BC001	0.5m/1.64ft bendable stainless steel channel		MF019	Extension connectors, 1m/3.28ft IP67, 4PIN	
M0002	Stainless steel clip		MF020	Extension connectors, 5m/16.40ft IP67, 4PIN	
E0005	End cap with 30cm/11.81" cable 4PIN for LINIO NEON 1615 TV (Front / side /bottom cable entry)		XLG-150-24-A	PSU 24V/150W IP67, Non-dimmable, White, 100-305V supply	
E0003	Closed end cap for LINIO NEON 1615 TV		ELG-150-24B	PSU 24V/150W IP67, 3 in 1 dimming function, White, 100-305V supply	
G0002	Silicone glue		M6+M3-3A	RF Controller 216W DC24V, 3A*3Channel, Max 9A IP20, Support remote control	

### Wiring connection



### Application



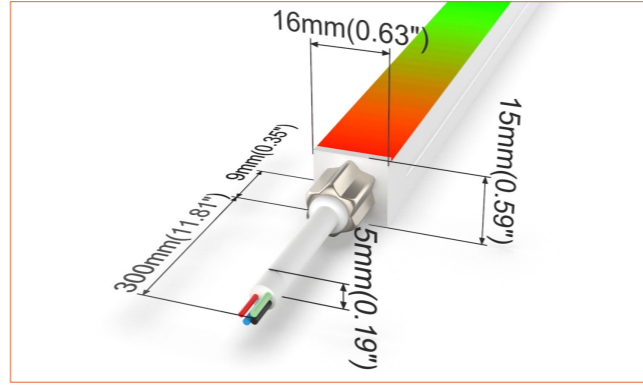
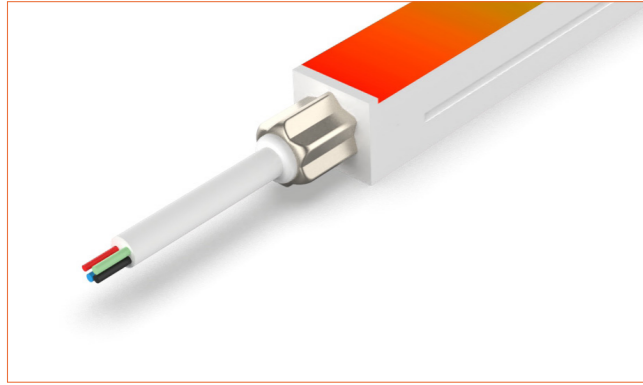
#### Where to use the product?

LINIO NEON 1615 TV RGB will let you explore more color possibilities through red-green-blue color mixing. More possibilities, more inspirations, and more achievements. Seek any new ideas in lighting projects, satisfy lighting designers' different expectations.

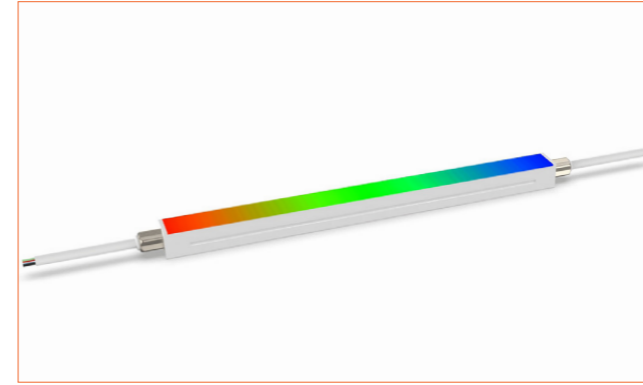
You can apply it in fancy restaurants, airports, shopping malls, apartments, Corporate offices, etc. Countless applications, just unlock your imaginations, and explore a more creative lighting design world.

# Beamever

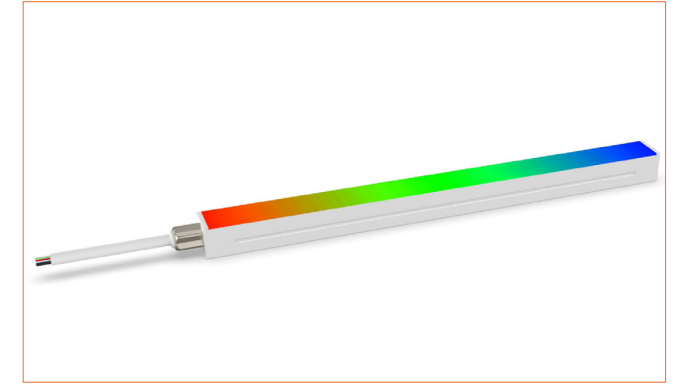
**Front Cable Entry**  
Suitable for power feed in or straight connection. Do not bend down or aside too sharp.



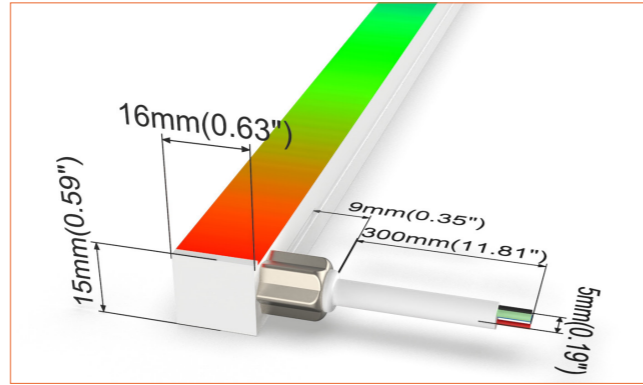
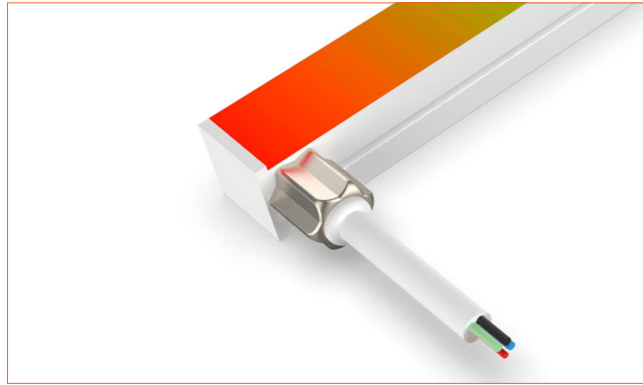
**Front double wire end:** 30cm/11.81" cable from two ends, front cable entry.



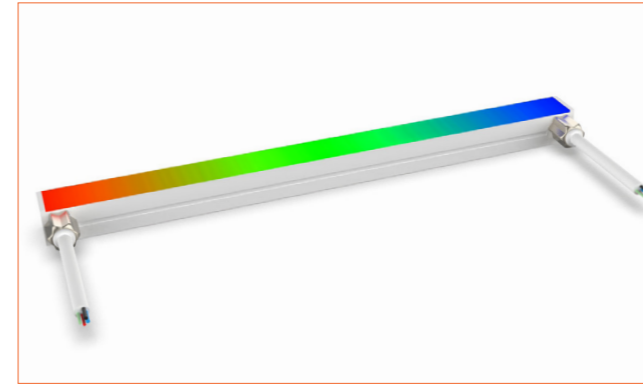
**Front single wire end:** 30cm/11.81" cable from one end, front cable entry.



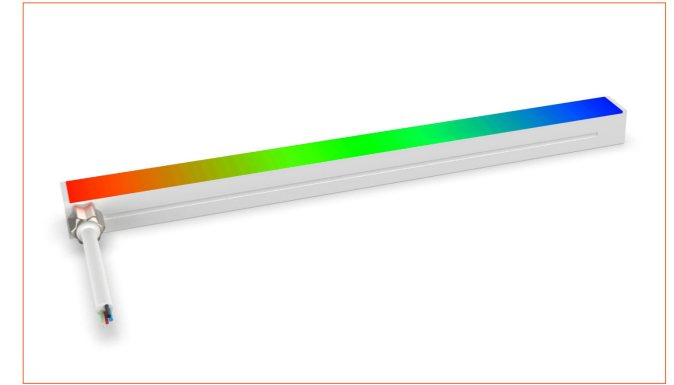
**Side Cable Entry**  
It can achieve perfect seamless light connection if the cabling space is allowed on the side.



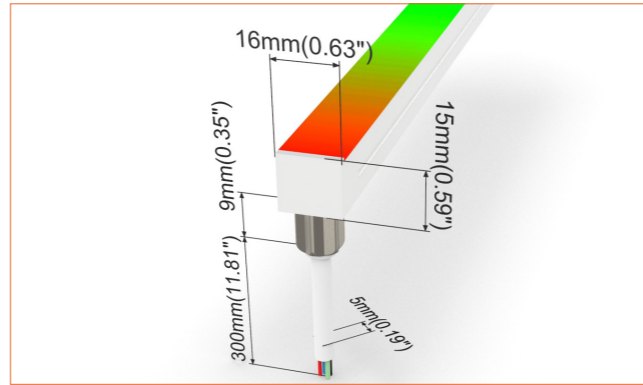
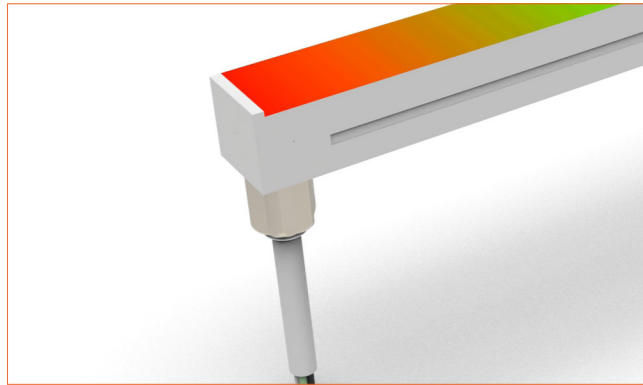
**Side double wire end:** 30cm/11.81" cable from two ends, side cable entry.



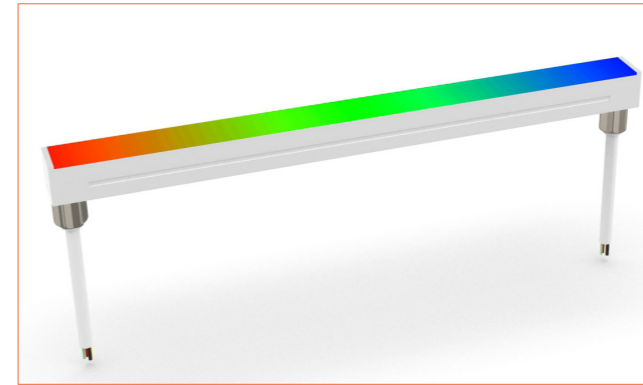
**Side single wire end:** 30cm/11.81" cable from left one only (side cable entry), other end with closed end cap.



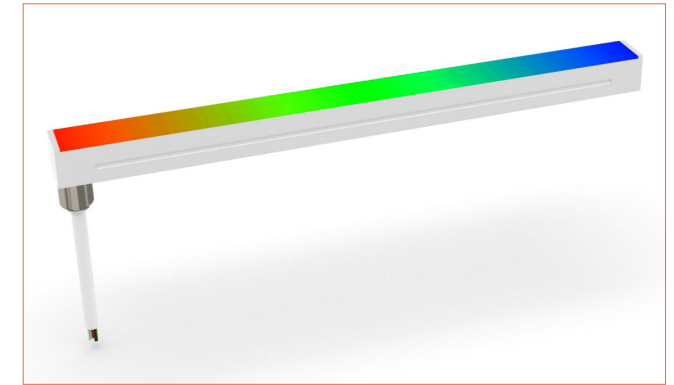
**Bottom Cable Entry**  
It can achieve perfect seamless light connection if the cabling space is allowed from the bottom.



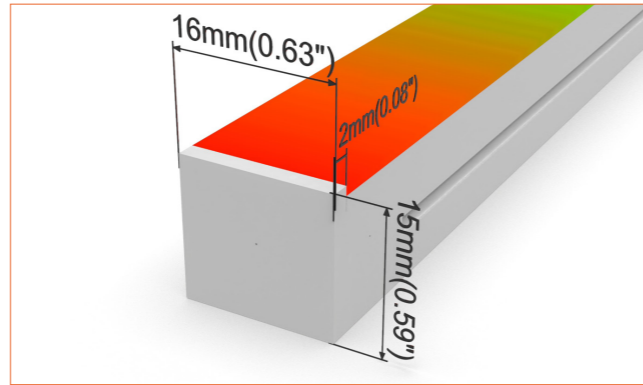
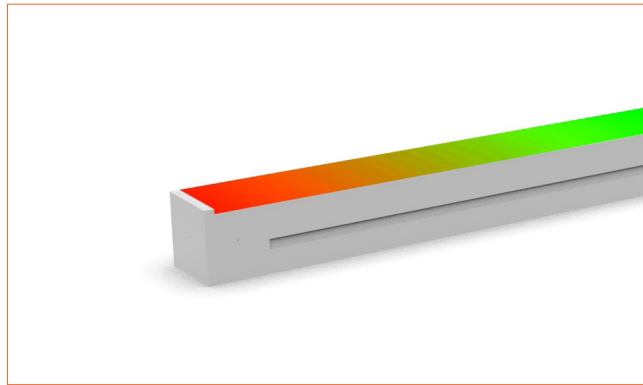
**Bottom double wire end:** 30cm/11.81" cable from two ends, bottom cable entry.

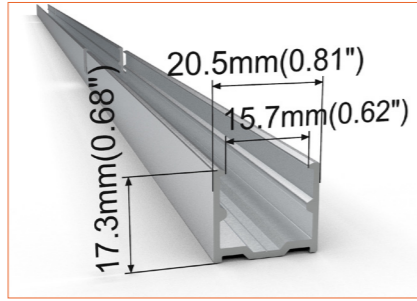
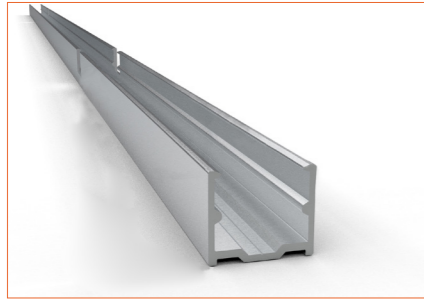


**Bottom single wire end:** 30cm/11.81" cable from left one only (bottom cable entry), other end with closed end cap.

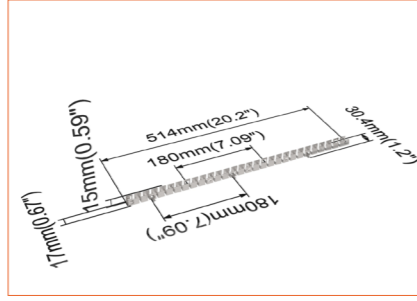
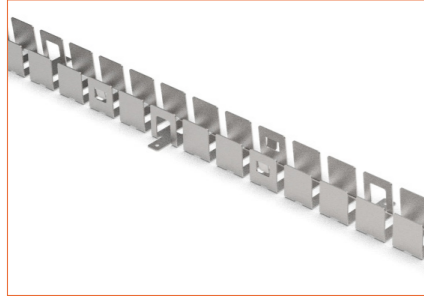


**Closed end cap**  
Elegant injecting closed end cap in same size as neon flex body.

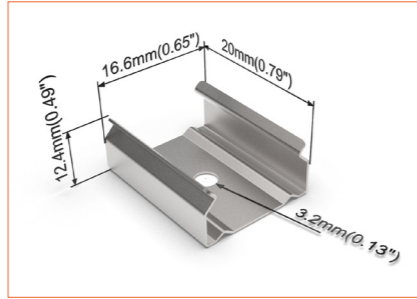
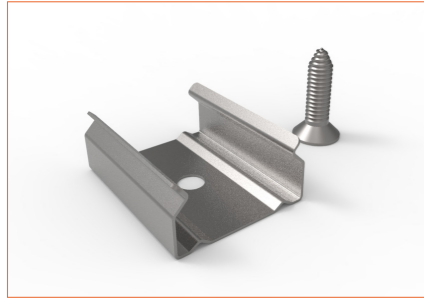




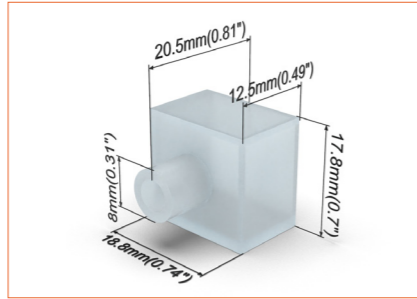
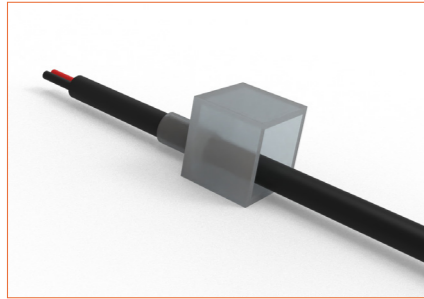
SC001  
Straight aluminium channel  
Length 1mtr/3.28ft



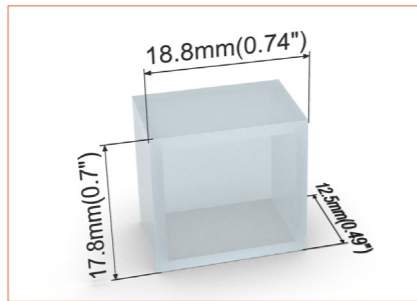
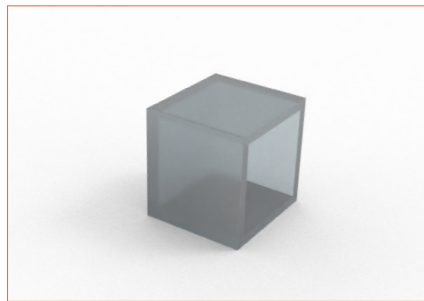
BC001  
Bendable stainless steel channel  
Length 0.5mtr/1.64ft



M0002  
Stainless steel mounting clip



E0005  
End cap with 30cm/11.81" cable



E0003  
Closed end cap

