

Beamever

LINIO NEON 1615 TV TW

IP67 protection with high performance silicone, UV resistant, solvents resistant. Seamless line in 30Mtrs roll.

One BIN Only to ensure perfect color consistency



Beamever

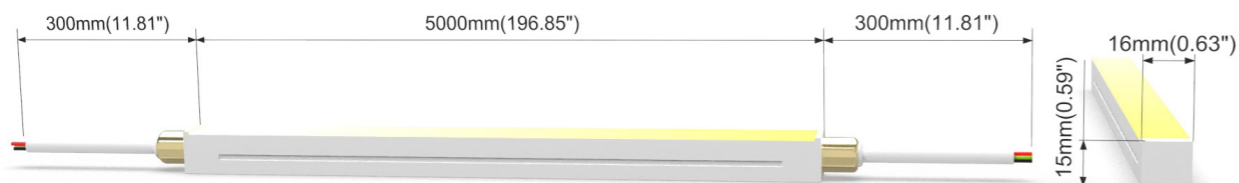
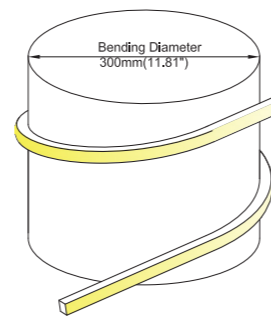


LINIO NEON 1615 TV TW

- Top view, and vertical bending with radius of 150mm/5.9".
- DC24V, cross section size 16mm x 15mm /0.63" x 0.59" (WxH).
- IP67 protection, UV resistant, and solvents resistant.
- 30m/reel(98.43ft/reel) maximum. And custom length are available as well.
- White adjustable from very warm white 2700K to cold white 5300K.
- Perfect color consistency thanks to 2-Step Lumileds LED.

Product Benefits:

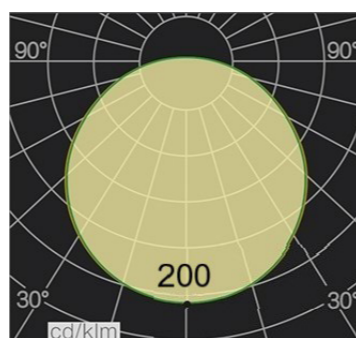
- Homogeneous and very gorgeous luminance 24/7 provides to you.
- Super durable of long-term application to save cost.
- Well-designed, exclusive as architectural lighting consideration.



Electrical data

Voltage	DC24V (23.5V _{min} 24.5V _{max})
LED PIN Temperature	Max. 65°C /149°F
Storage Temperature	-25°C /-13°F _{min} 60°C /140°F _{max}
Ambient Temperature	T _a min=-25°C /-13°F; T _a max=35°C /95°F@4.57W T _a max=45°C /113°F@2.29W(Single Color)
Power(W/ft)	4.57
Efficacy (lm/W)	68lm/W@2700K+5300K 4.57W
CRI	80

CCT	Lumen/ft	Max. Watt (W/ft)	Max. Run Length (ft)	Cut Increments (inch)
2700K	157	2.29	16.40	1.97
5300K	156	2.29	16.40	1.97
2700K+5300K	312	4.57	16.40	1.97



Important notice

- The given data are typical values due to the tolerances of the production process and the electrical components, values for light output and electrical power can vary up to 10%.
- The given color temperature is neon flex (after extrusion) color temperature.
- Standard cable length is 30cm/11.81", if longer cable required, please contact us.
- Male and female connectors are available if needed.
- It is IK08 rated. Please use protection materials if it is walk over application.



Order code

SERIES NAME	COLOR	LENGTH	POWER	CABLE ENTRY
LN1615TV TW	2753= 2700+5300K	1.97"-1181.10"	457=4.57W	F=FRONT S=SIDE B=BOTTOM



Front Cable Entry
Suitable for power feed in or straight connection. Do not bend down or aside too sharp.



Side Cable Entry
It can achieve perfect seamless light connection if the cabling space is allowed on the side.



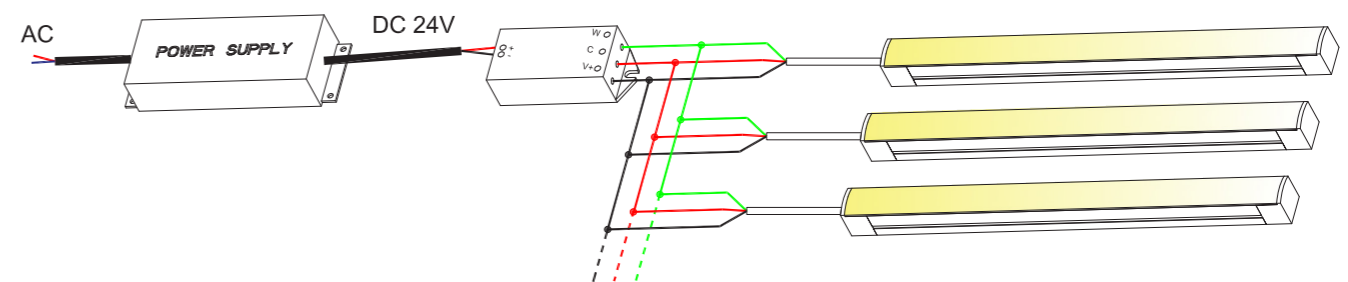
Bottom Cable Entry
It can achieve perfect seamless light connection if the cabling space is allowed from the bottom.

Example: LN1615TV TW-2753-196.85-457-F: LINIO NEON 1615 TV TW 2700K+5300K, 196.85"/reel, 4.57W/ft, Front cable entry.

Accessories

Art.#	Description	Picture	Art.#	Description	Picture
SC001	1m/3.28ft anodized aluminium channel for LINIO NEON 1615 TV		MF015	Male and female connectors, 30cm/11.81" IP67, 3PIN	
BC001	0.5m/1.64ft bendable stainless steel channel		MF016	Extension connectors, 1m/3.28ft IP67, 3PIN	
M0002	Stainless steel clip		MF017	Extension connectors, 5m/16.40ft IP67, 3PIN	
E0004	End cap with 30cm/11.81" cable 3PIN for LINIO NEON 1615 TV (Front / side /bottom cable entry)		XLG-150-24-A	PSU 24V/150W IP67, Non-dimmable, White, 100-305V supply	
E0003	Closed end cap for LINIO NEON 1615 TV		ELG-150-24B	PSU 24V/150W IP67, 3 in 1 dimming function, White, 100-305V supply	
G0002	Silicone glue		M2+M3-3A	RF Controller 144W DC24V, 3A*2Channel, Max 6A IP20, Support remote control	

Wiring connection



Application



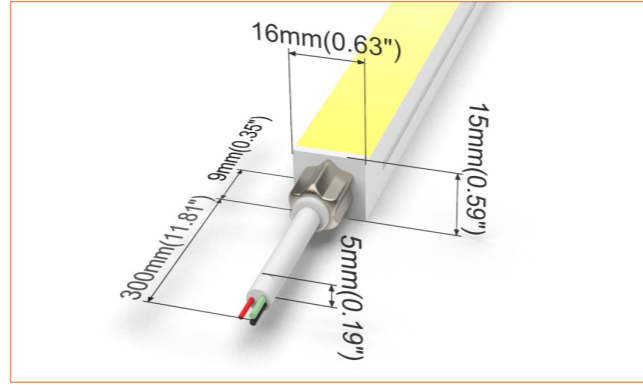
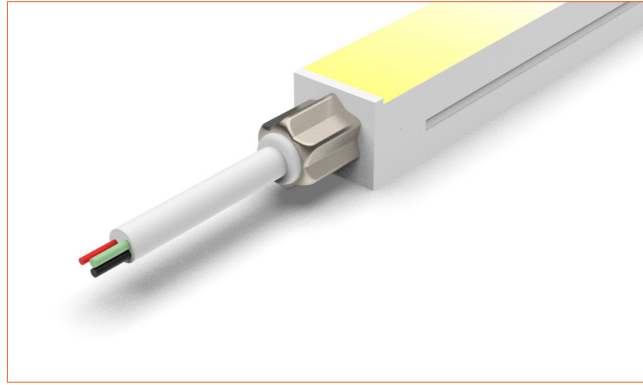
Where to use the product?

LINIO NEON 1615 TV TW provides homogeneous and flawless luminance all of the time. Super durable as a long-term lighting application to light up your projects. Well-designed, exclusive for lighting designers' consideration when starting over a new project.

Specially, you can apply for projects like a Shangri-La hotel in New York. In this case, the key words are luxury, rich, and golden - apply a different range of WHT color, to present any ambience as desired.

Beamever

Front Cable Entry
Suitable for power feed in or straight connection. Do not bend down or aside too sharp.



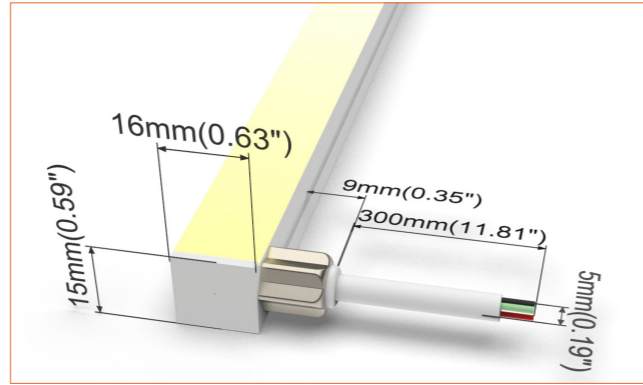
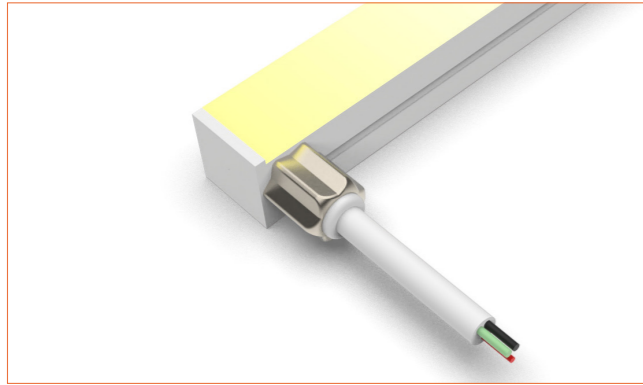
Front double wire end: 30cm/11.81" cable from two ends, front cable entry.



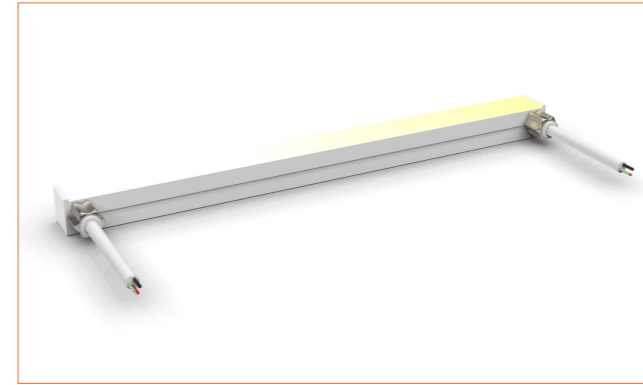
Front single wire end: 30cm/11.81" cable from one end, front cable entry.



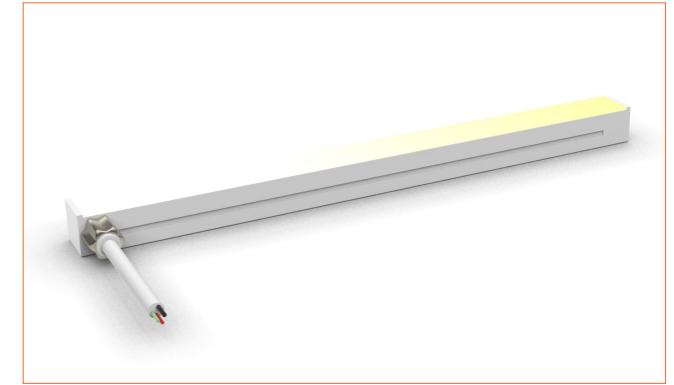
Side Cable Entry
It can achieve perfect seamless light connection if the cabling space is allowed on the side.



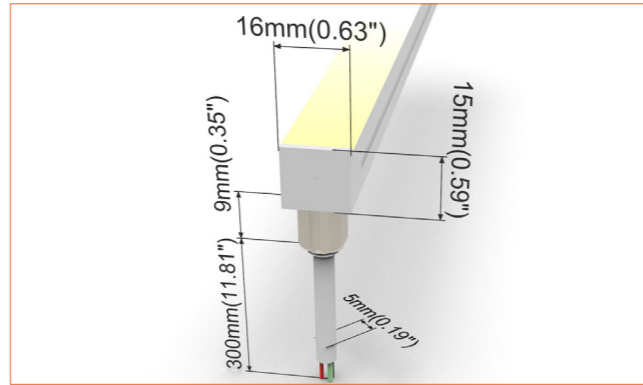
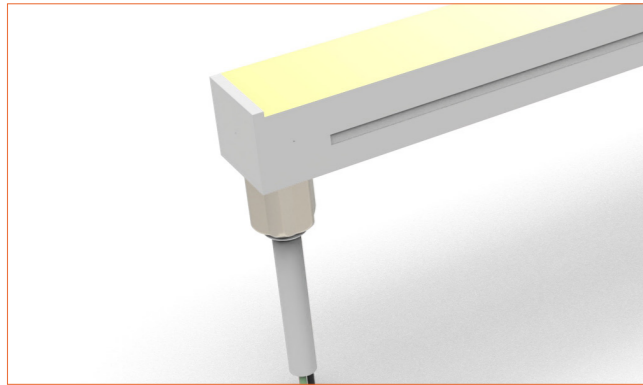
Side double wire end: 30cm/11.81" cable from two ends, side cable entry.



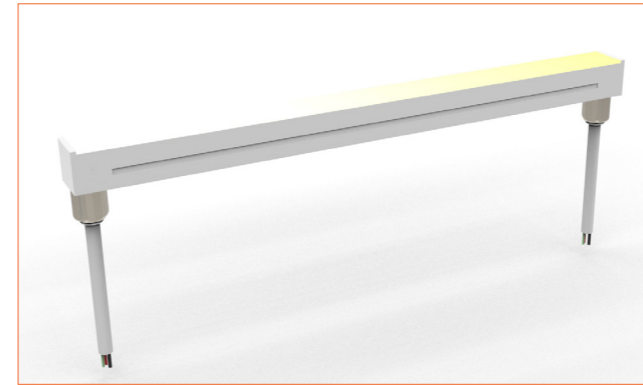
Side single wire end: 30cm/11.81" cable from left one only (side cable entry), other end with closed end cap.



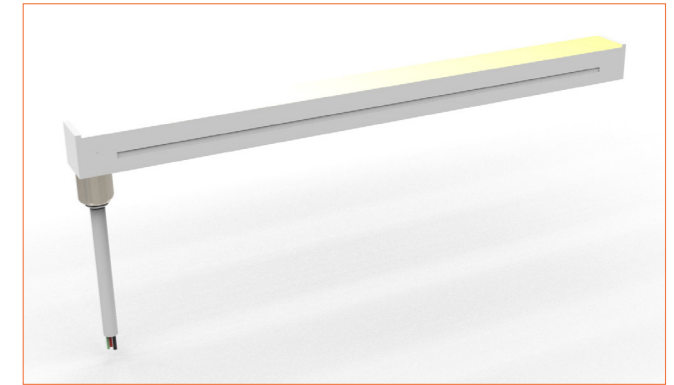
Bottom Cable Entry
It can achieve perfect seamless light connection if the cabling space is allowed from the bottom.



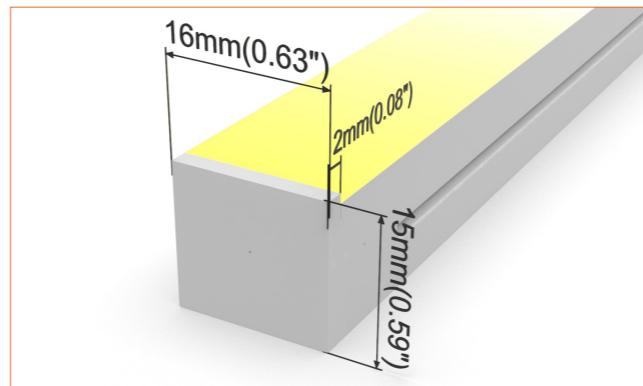
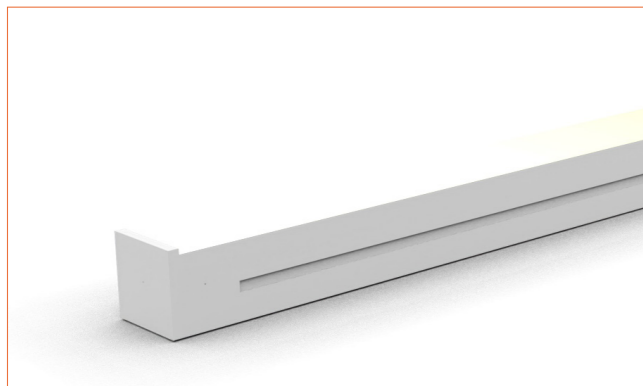
Bottom double wire end: 30cm/11.81" cable from two ends, bottom cable entry.

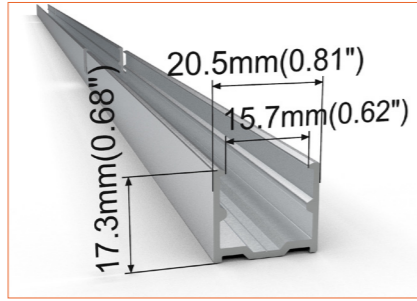
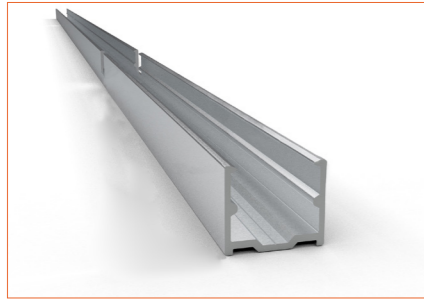


Bottom single wire end: 30cm/11.81" cable from left one only (bottom cable entry), other end with closed end cap.

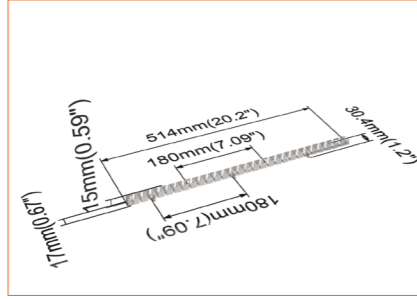
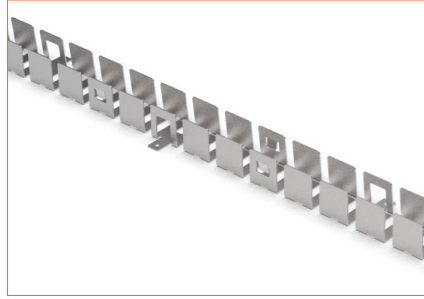


Closed end cap
Elegant injecting closed end cap in same size as neon flex body.

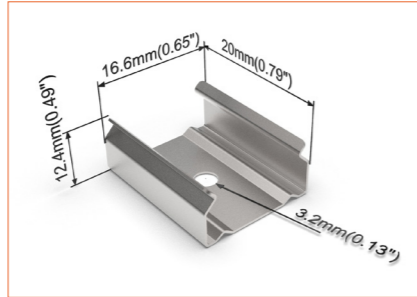
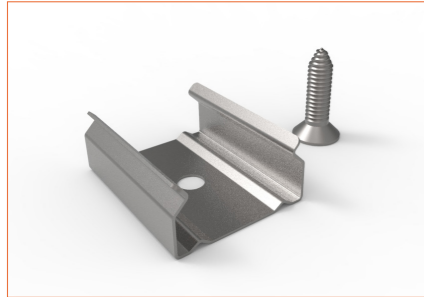




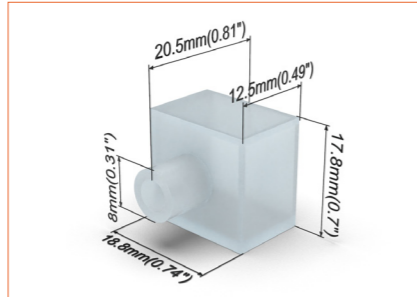
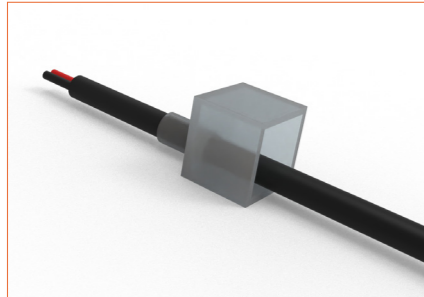
SC001
Straight aluminium channel
Length 1mtr/3.28ft



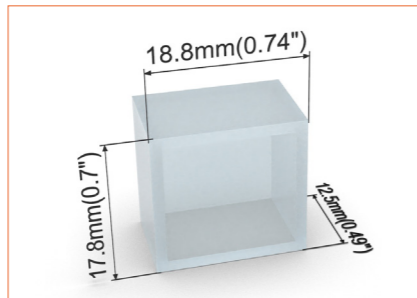
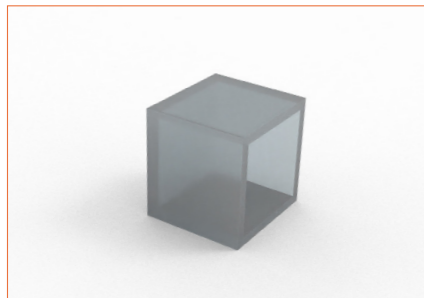
BC001
Bendable stainless steel channel
Length 0.5mtr/1.64ft



M0002
Stainless steel mounting clip



E0004
End cap with 30cm/11.81" cable



E0003
Closed end cap