

Beamever

LINIO NEON 3D

IP67 protection with high performance silicone, UV resistant, solvents resistant.
Twisted linear line.

One BIN Only to ensure perfect color consistency



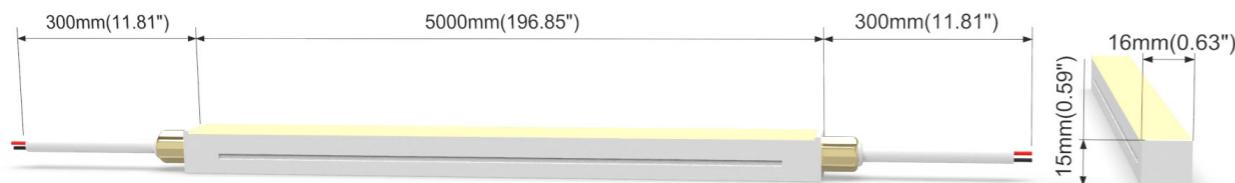
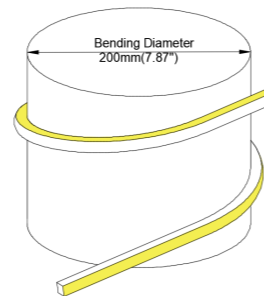


LINIO NEON 3D

- Horizontal and vertical bending directions as 3D space-sense of lighting up.
- With radius of 100mm/3.94".
- DC24V, cross section size 16mm x 15mm /0.63" x 0.59" (WxH).
- IP67 protection with high performance silicone, UV resistant, solvents resistant.
- 30m/reel(98.43ft/reel) maximum. Max. Run length refers to single side feed in serial connection.
- Cuttable and reconnectable frees you more spaces to achieve different ideas.
- Perfect color consistency thanks to 2-Step Lumileds LED.

Product Benefits:

- Homogeneous luminance and high-color consistency.
- Super durable and flexible as great working performance services you 24/7.
- Well-designed with 3D unlimited creative-power for each of your lighting projects.

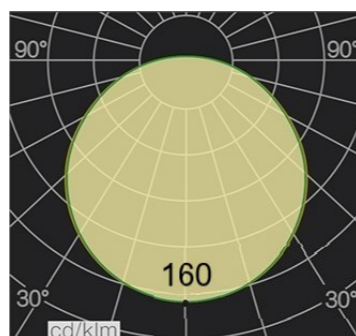


Electrical data

Voltage	DC24V (23.5V _{min} , 24.5V _{max})
LED PIN Temperature	Max. 65°C /149°F
Storage Temperature	-25°C /-13°F _{min} , 60°C /140°F _{max}
Min. Ambient Temp.(Ta _{min})	-25°C /-13°F
Max. Ambient Temp.(Ta _{max})	45°C /113°F@3.05W
Power(W/ft)	3.05
Efficacy (lm/W)	72lm/W@4000K
CRI	Ra93
Cut Increments	50mm/1.97"



Lumen/ft	3.05W
2700K	211
3000K	214
3500K	217
4000K	220
5000K	224
Max. Run Length(ft)	16.40



Important notice

- The given data are typical values due to the tolerances of the production process and the electrical components, values for light output and electrical power can vary up to 10%.
- The given color temperature is neon flex (after extrusion) color temperature.
- Standard cable length is 30cm/11.81", if longer cable required, please contact us.
- Male and female connectors are available if needed.
- It is no IK-Rated, please don't walk on it without protection.

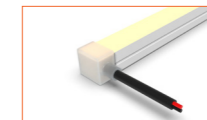


Order code

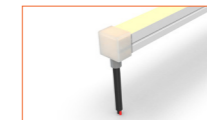
SERIES NAME	COLOR	LENGTH	POWER	CABLE ENTRY
LN 3D	27= 2700K	1.97"-1181.10"	305=3.05W	F=FRONT
	30= 3000K			S=SIDE
	35= 3500K			B=BOTTOM
	40= 4000K			
	50=5000K			



Front Cable Entry
Suitable for power feed in or straight connection. Do not bend down or aside too sharp.



Side Cable Entry
It can achieve perfect seamless light connection if the cabling space is allowed on the side.



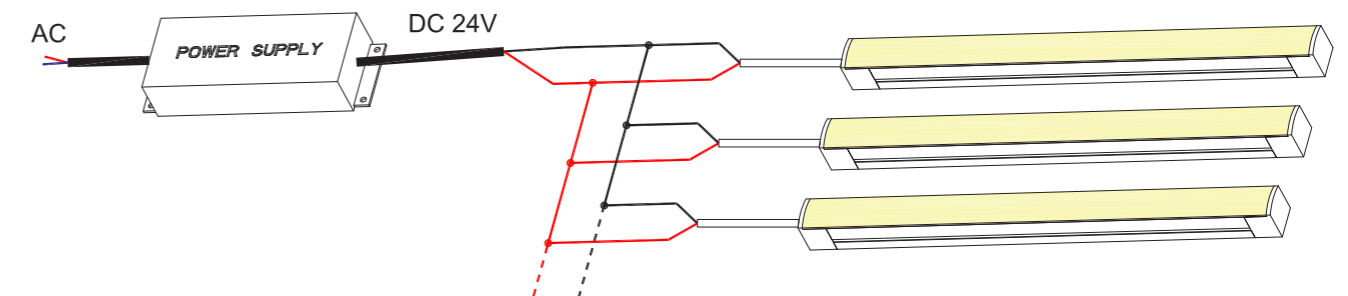
Bottom Cable Entry
It can achieve perfect seamless light connection if the cabling space is allowed from the bottom.

Example: LN 3D-27-196.85-305-F: LINIO NEON 3D 2700K, 196.85"/reel, 3.05W/ft, front cable entry.

Accessories

Art.#	Description	Picture	Art.#	Description	Picture
SC001	1m/3.28ft anodized aluminium channel for LINIO NEON 3D		MF012	Male and female connectors, 30cm/11.81" IP67, 2PIN	
BC001	0.5m/1.64ft bendable stainless steel channel		MF013	Extension connectors, 1m/3.28ft IP67, 2PIN	
M0002	Stainless steel clip		MF014	Extension connectors, 5m/16.40ft IP67, 2PIN	
E0002	End cap with 30cm/11.81" cable 2PIN for LINIO NEON 3D (Front / side /bottom cable entry)		XLG-150-24-A	PSU 24V/150W IP67, Non-dimmable, White, 100-305V supply	
E0003	Closed end cap for LINIO NEON 3D		ELG-150-24B	PSU 24V/150W IP67, 3 in 1 dimming function, White, 100-305V supply	
G0002	Silicone glue		ELG-150-24DA	PSU 24V/150W IP67, DALI control technology, White, 100-305V supply	

Wiring connection



Application



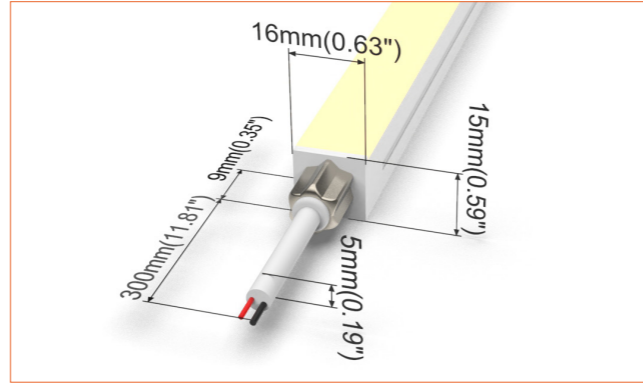
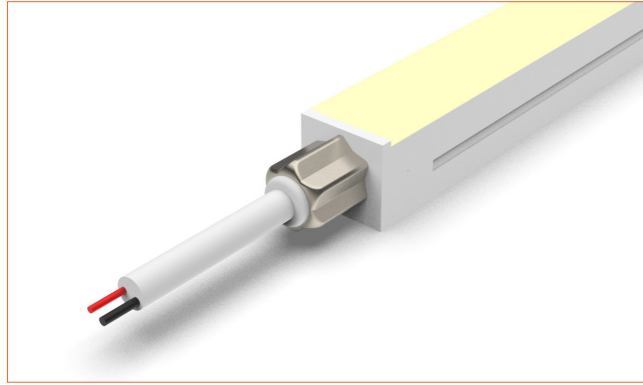
Where to use the product?

LINIO NEON 3D is creatively designed as highly twistable and flexible to bring you unforgettable illuminance. It can be twisted vertically and horizontally. Provides you with more design freedom than ever before.

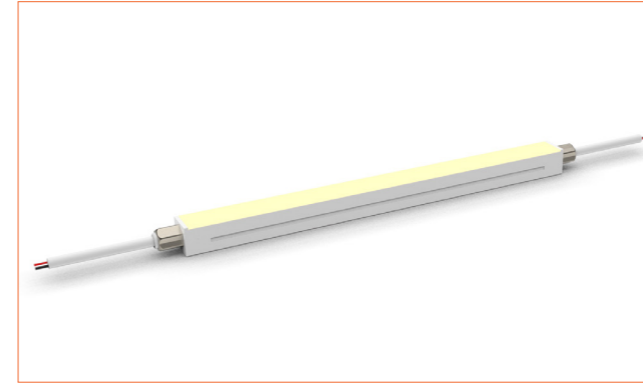
It works throughout architectural lighting, facade lighting, landscape lighting, exterior and interior lighting projects. Specific examples can be: to decorate an art museum that contains music, history, paintings, art-shows located in Florence, Italy.

Beamever

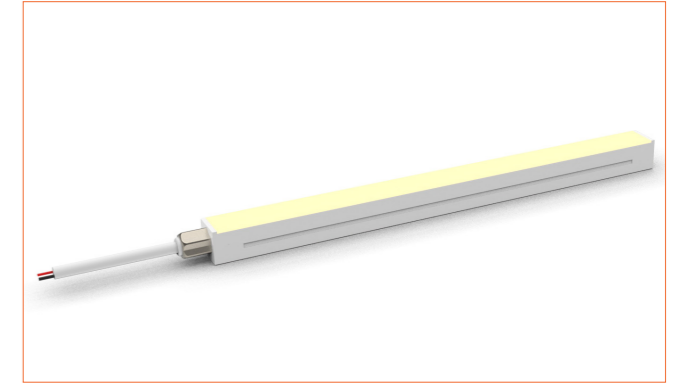
Front Cable Entry
Suitable for power feed in or straight connection. Do not bend down or aside too sharp.



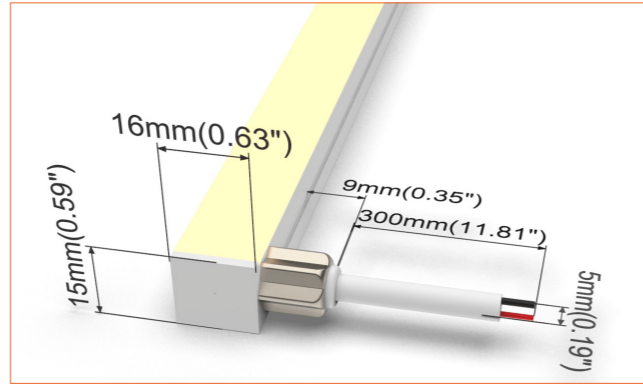
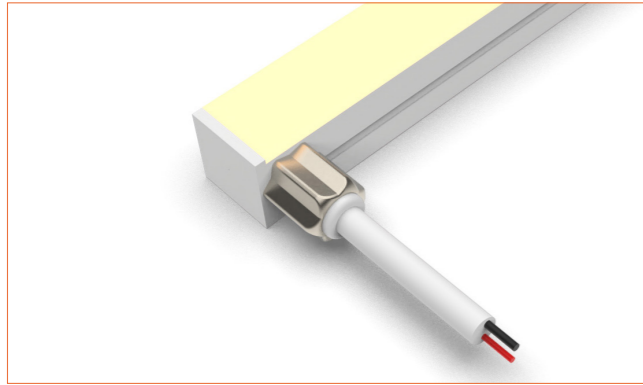
Front double wire end: 30cm/11.81" cable from two ends, front cable entry.



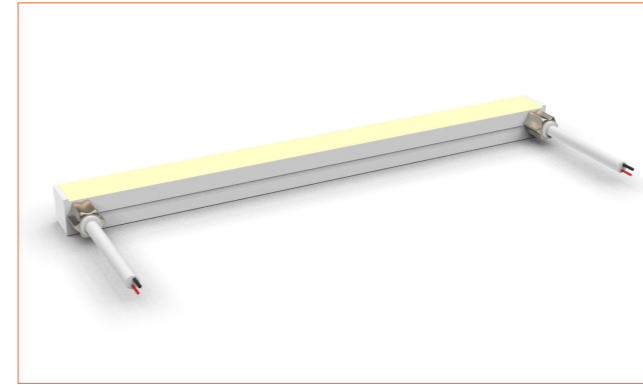
Front single wire end: 30cm/11.81" cable from one end, front cable entry.



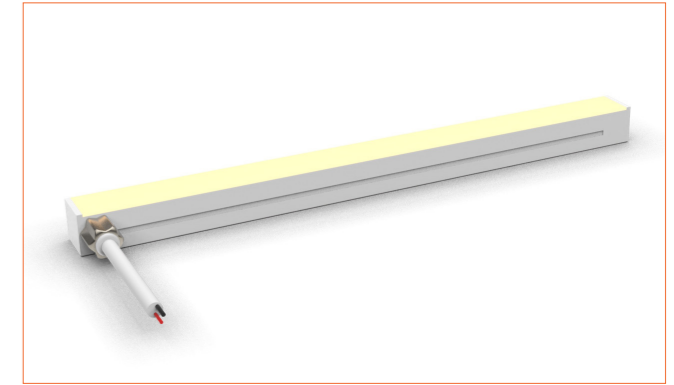
Side Cable Entry
It can achieve perfect seamless light connection if the cabling space is allowed on the side.



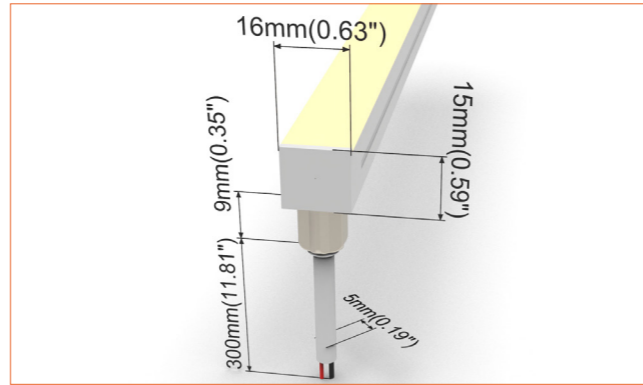
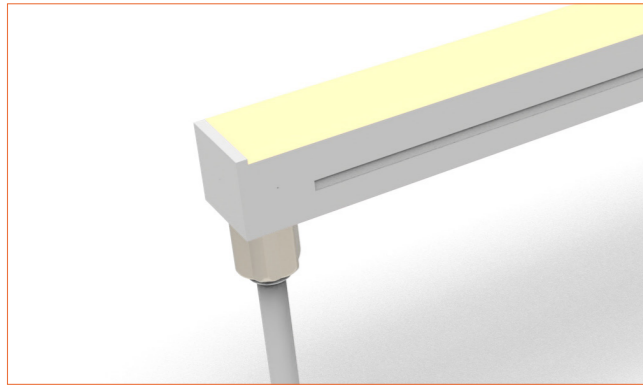
Side double wire end: 30cm/11.81" cable from two ends, side cable entry.



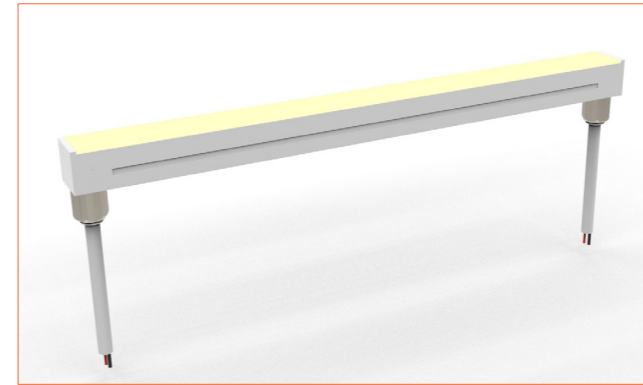
Side single wire end: 30cm/11.81" cable from left one only (side cable entry), other end with closed end cap.



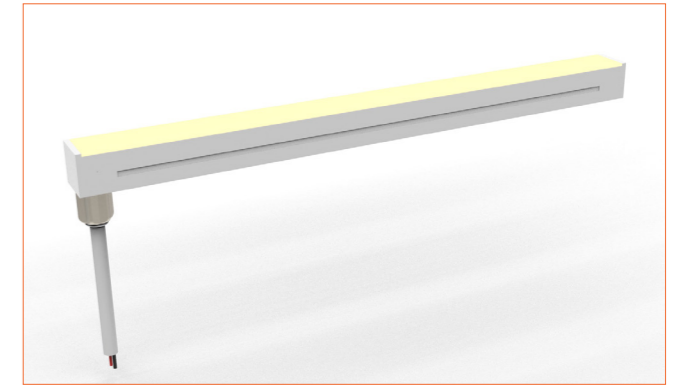
Bottom Cable Entry
It can achieve perfect seamless light connection if the cabling space is allowed from the bottom.



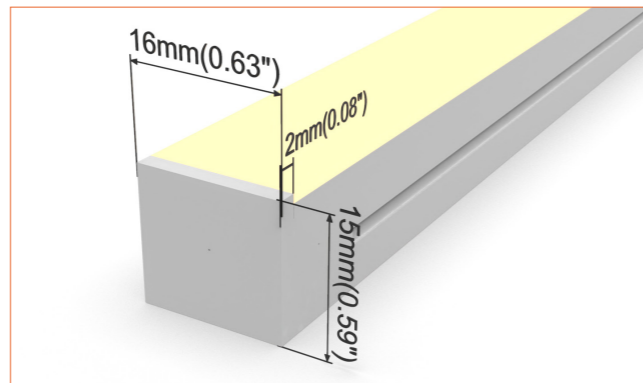
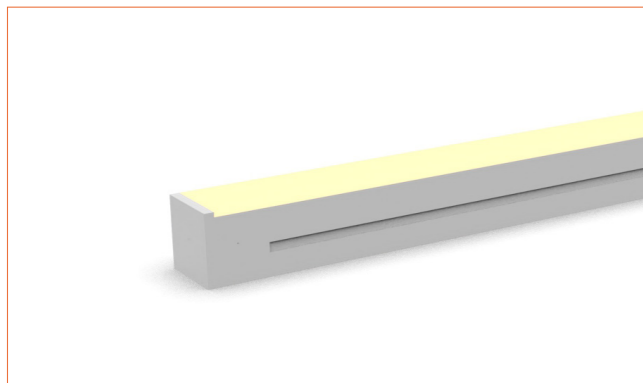
Bottom double wire end: 30cm/11.81" cable from two ends, bottom cable entry.



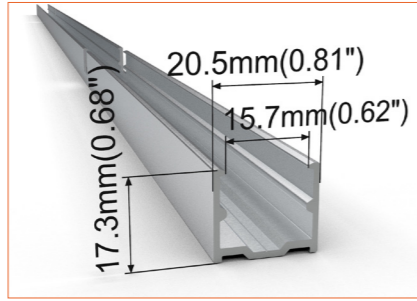
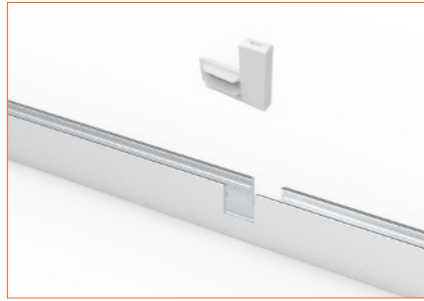
Bottom single wire end: 30cm/11.81" cable from left one only (bottom cable entry), other end with closed end cap.



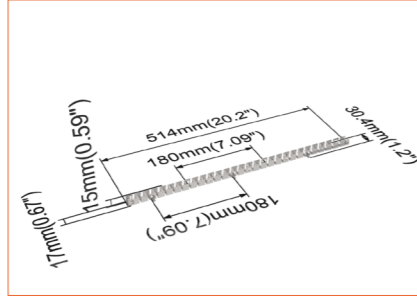
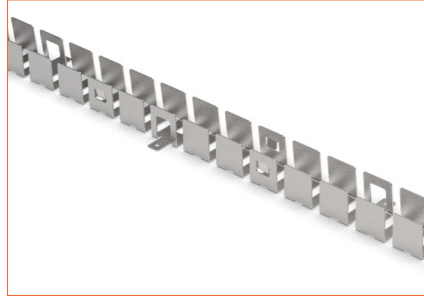
Closed end cap
Elegant injecting closed end cap in same size as neon flex body.



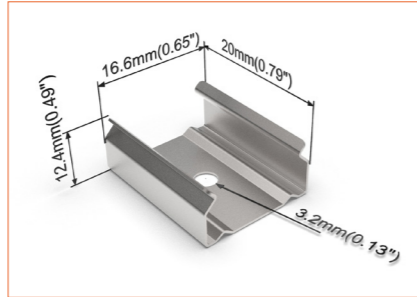
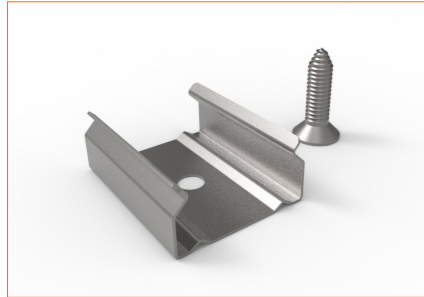
Beamever



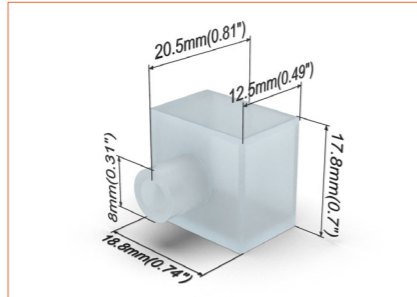
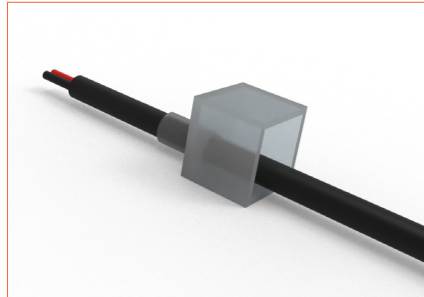
SC001
Straight aluminium channel
Length 1mtr/3.28ft



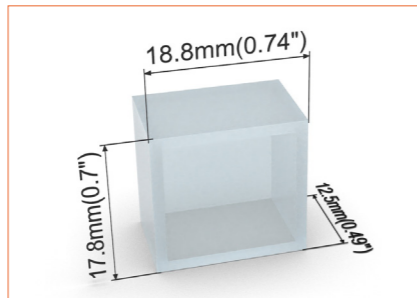
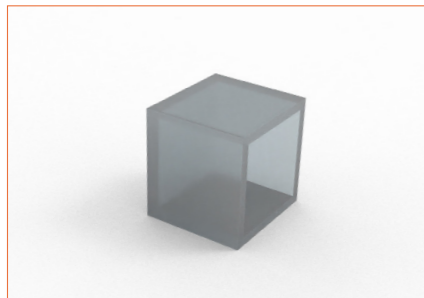
BC001
Bendable stainless steel channel
Length 0.5mtr/1.64ft



M0002
Stainless steel mounting clip



E0002
End cap with 30cm/11.81" cable



E0003
Closed end cap



Beamever

Address: 100 N Howard St Ste R,
Spokane, WA, 99201-0508 USA
Tel: 323-5104660
info@beamever.com
www.beamever.com