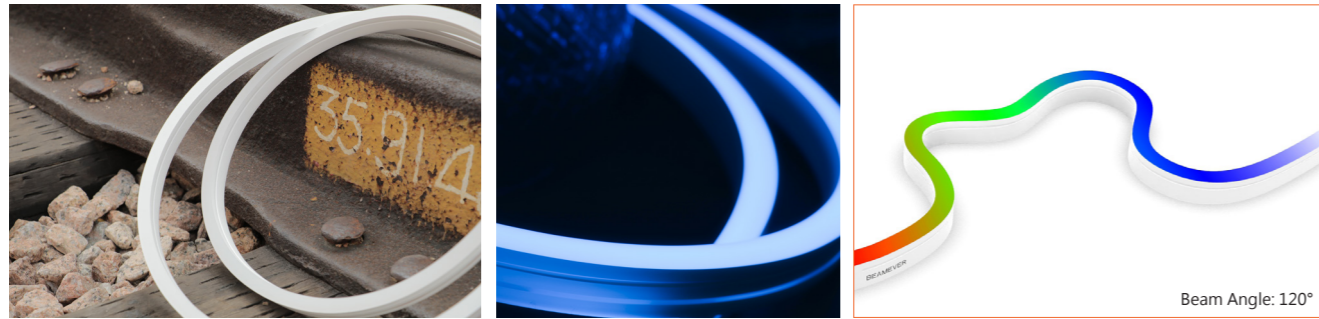


LINEO NEON I220 SV RGBW

IP67 protection with high performance silicone, UV resistant, solvents resistant. Seamless line in 30Mtrs roll.

One BIN Only to ensure perfect color consistency

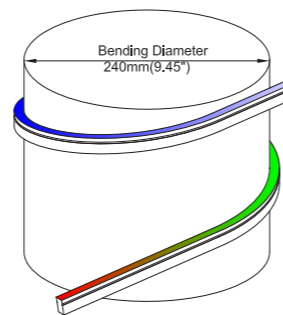


LINIO NEON 1220 SV RGBW

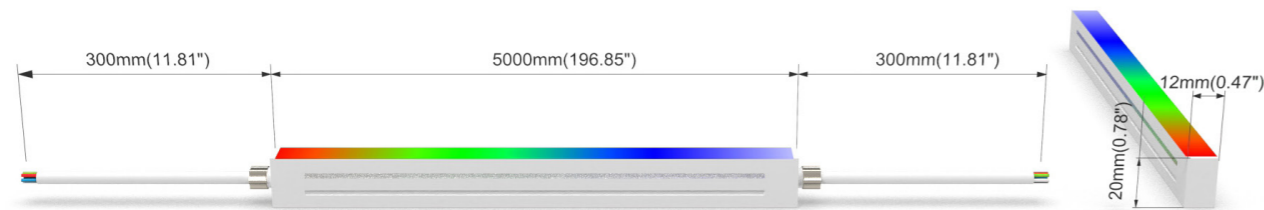
- Side view, with horizontal bending with radius of 120mm/4.72".
- DC24V, and the cross section size 12mm x 20mm /0.47" x 0.79" (W x H).
- IP67 protection, great silicone, UV resistant, and solvents resistant.
- 30m/reel(98.43ft/reel) maximum. Max. Run length refers to single side feed in serial connection.
- Easy to be cut and reconnected to meet different project sites.
- Custom length and other customized services are available when you need.
- Let you to create bolder and more vivid colors than with RGB alone. 4-in-1.

Product Benefits:

- Offers the best homogeneous and flawless luminance to each corner shined.
- Durable and trustful as a long-term application to save your time and costs.
- Well-designed, and 'green-energy' to stay healthy and beautiful all the time.



Beam Angle: 120°

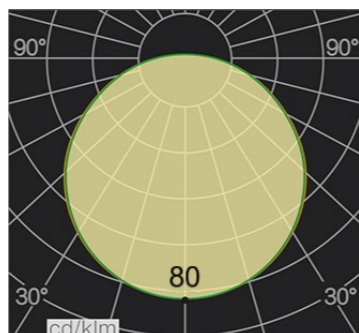


Electrical data

Voltage	DC24V (23.5V _{min} 24.5V _{max})
LED PIN Temperature	Max. 65°C /149°F
Storage Temperature	-25°C /-13°F _{min} 60°C /140°F _{max}
Ambient Temperature	Ta _{min} = -25°C /-13°F; Ta _{max} = 35°C /95°F@4.57W Ta _{max} = 55°C /131°F@1.14W(Single Color)
Power(W/ft)	4.57
Efficacy (lm/W)	21lm/W@RGBW40 4.57W



CCT	Lumen/ft	Max. Watt (W/ft)	Max. Run Length (ft)	Cut Increments (inch)
R	11	1.14	32.80	4.92
G	33	1.14	32.80	4.92
B	10	1.14	32.80	4.92
W27	37	1.14	32.80	4.92
W40	41	1.14	32.80	4.92
W53	38	1.14	32.80	4.92
RGBW40	95	4.57	32.80	4.92



Important notice

- The given data are typical values due to the tolerances of the production process and the electrical components, values for light output and electrical power can vary up to 10%.
- The given color temperature is neon flex (after extrusion) color temperature.
- Standard cable length is 30cm/11.81", if longer cable required, please contact us.
- Male and female connectors are available if needed.
- It is IK08 rated. Please use protection materials if it is walk over application.

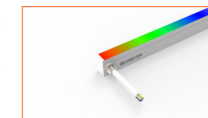


Order code

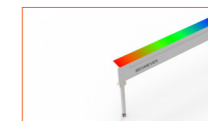
SERIES NAME	COLOR	LENGTH	POWER	CABLE ENTRY
LN1220SV RGBW	27= 2700K	4.92"-1181.10"	457=4.57W	F=FRONT
	40= 4000K			S=SIDE
	53= 5300K			B=BOTTOM



Front Cable Entry
Suitable for power feed in or straight connection. Do not bend down or aside too sharp.



Side Cable Entry
It can achieve perfect seamless light connection if the cabling space is allowed on the side.



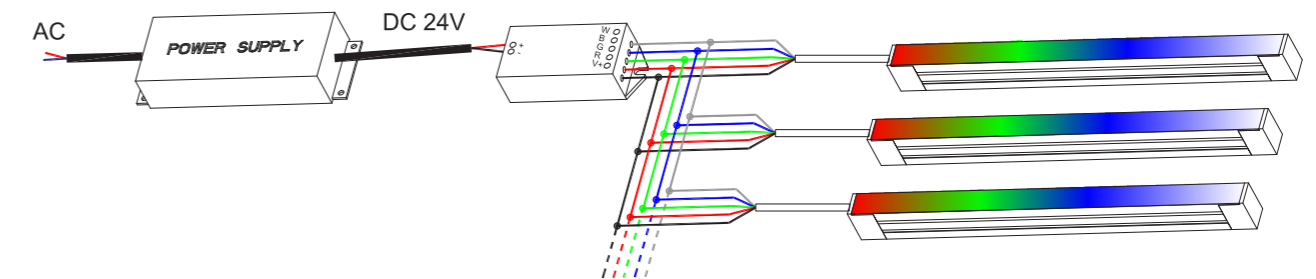
Bottom Cable Entry
It can achieve perfect seamless light connection if the cabling space is allowed from the bottom.

Example: LN1220SV RGBW27-98.43-457-F: LINIO NEON 1220 SV RGBW, W=2700K, 98.43"/reel, 4.57W/ft, Front cable entry.

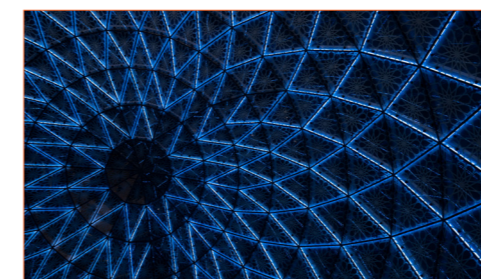
Accessories

Art.#	Description	Picture	Art.#	Description	Picture
SC002	1m/3.28ft anodized aluminium channel for LINIO NEON 1220 SV		MF022	Extension connectors, 1m/3.28ft IP67, 5PIN	
M0003	Stainless steel clip		MF023	Extension connectors, 5m/16.40ft IP67, 5PIN	
E0012	End cap with 30cm/11.81" cable 5PIN for LINIO NEON 1220 SV RGBW (Front / side /bottom cable entry)		XLG-150-24-A	PSU 24V/150W IP67, Non-dimmable, White, 100-305V supply	
E0009	Closed end cap for LINIO NEON 1220 SV RGBW		ELG-150-24B	PSU 24V/150W IP67, 3 in 1 dimming function, White, 100-305V supply	
G0002	Silicone glue		ELG-150-24DA	PSU 24V/150W IP67, DALI control technology, White, 100-305V supply	
MF021	Male and female connectors, 30cm/11.81" IP67, 5PIN		M4+M4-3A	RF Controller 288W DC24V, 3A*4Channel, Max 12A IP20, Support remote control	

Wiring connection



Application



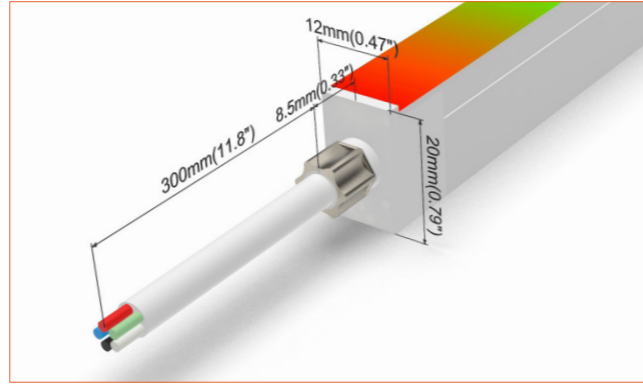
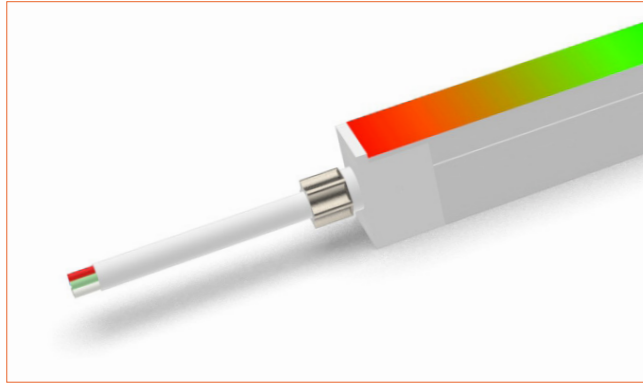
Where to use the product?

LINIO NEON 1220 SV RGBW lets you unlock many more colors through creative color mixing. DMX512 control system manipulates great programs, luminaires, and devices.

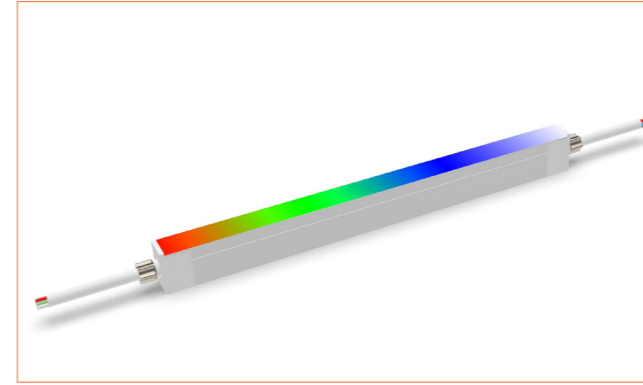
As a fantastic product, it is particularly for architectural lighting, residential lighting, decorative lighting, and any places that need light up. For example, you apply LINIO NEON 1220 SV RGBW in an airport, to shine up the whole space to become highly commercial, public, and high-end.

Beamever

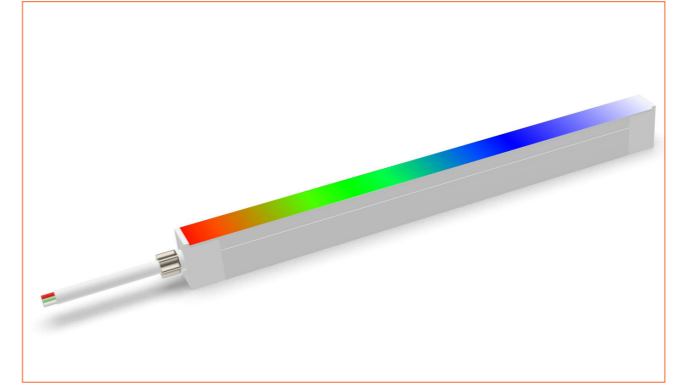
Front Cable Entry
Suitable for power feed in or straight connection. Do not bend down or aside too sharp.



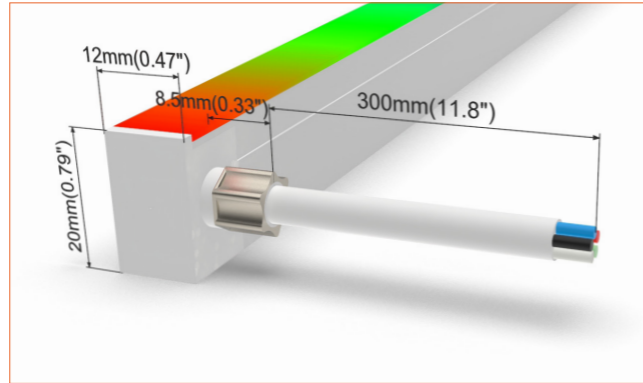
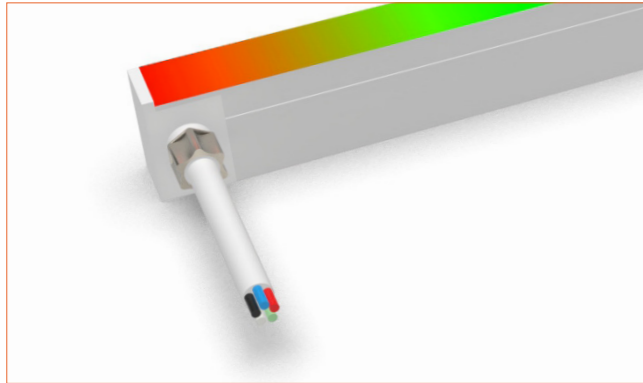
Front double wire end: 30cm/11.81" cable from two ends, front cable entry.



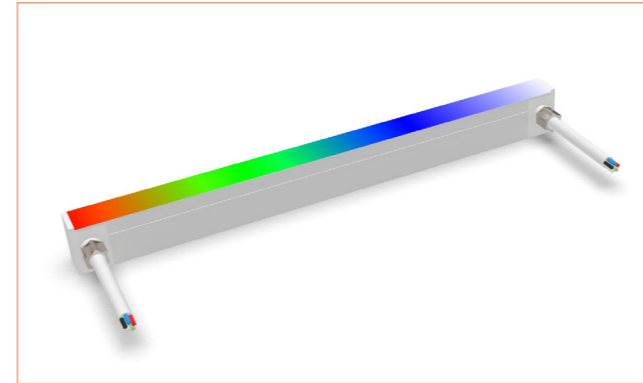
Front single wire end: 30cm/11.81" cable from one end, front cable entry.



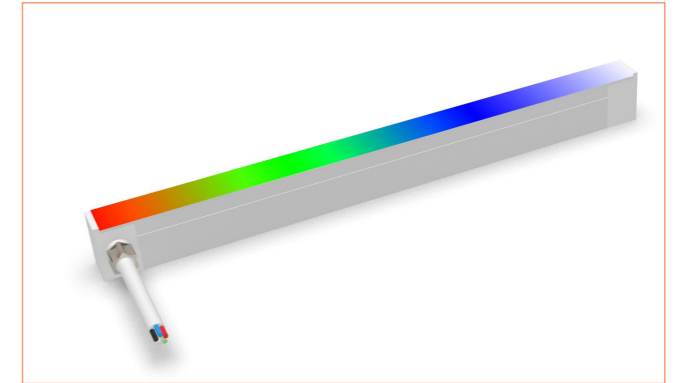
Side Cable Entry
It can achieve perfect seamless light connection if the cabling space is allowed on the side.



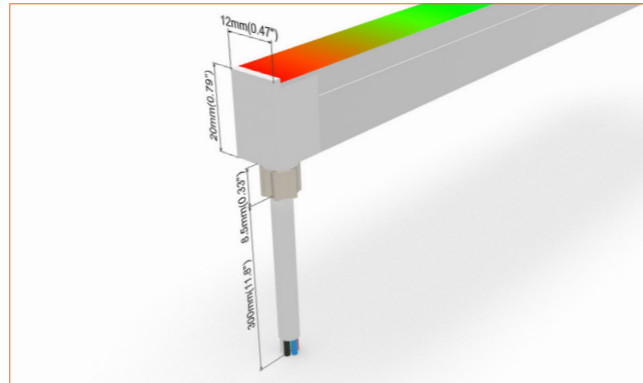
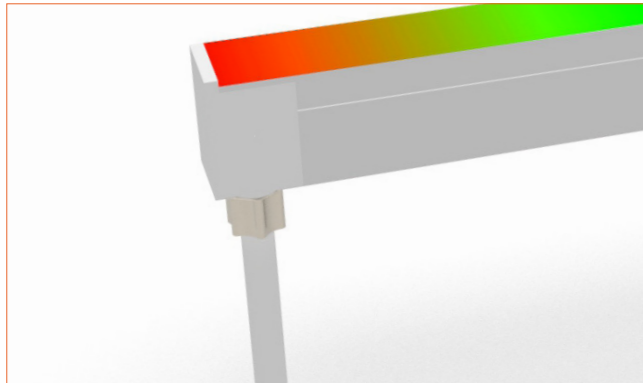
Side double wire end: 30cm/11.81" cable from two ends, side cable entry.



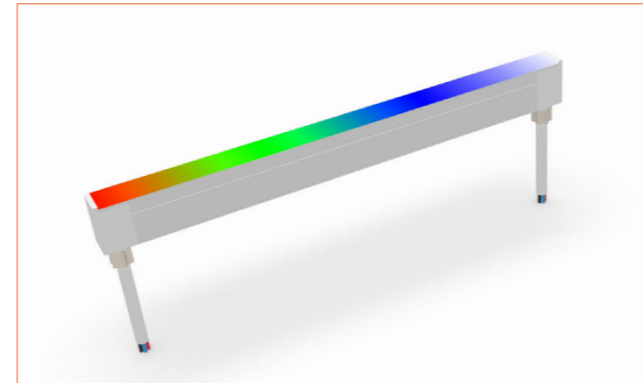
Side single wire end: 30cm/11.81" cable from left one only (side cable entry), other end with closed end cap.



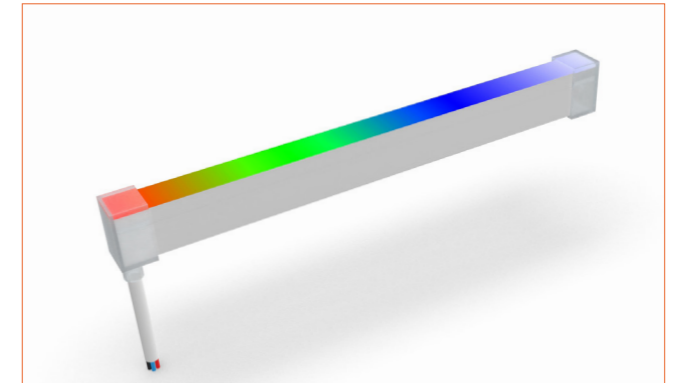
Bottom Cable Entry
It can achieve perfect seamless light connection if the cabling space is allowed from the bottom.



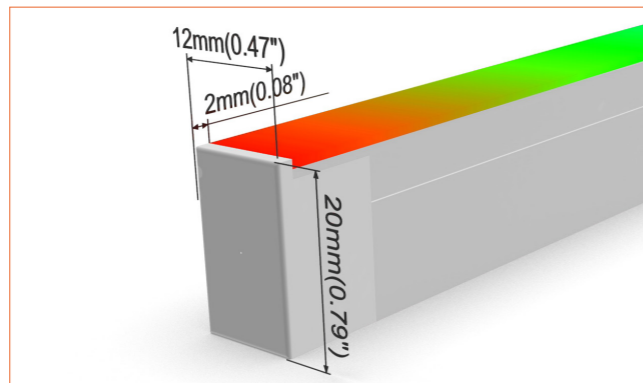
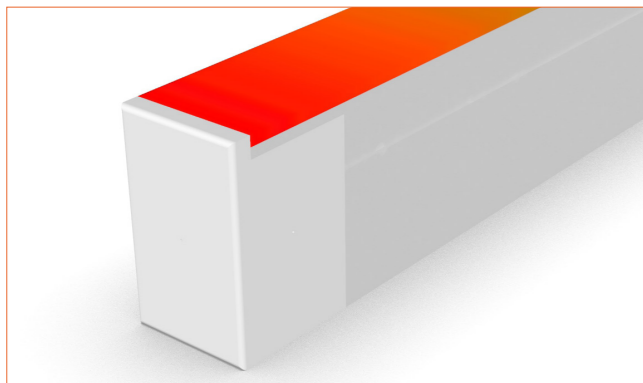
Bottom double wire end: 30cm/11.81" cable from two ends, bottom cable entry.



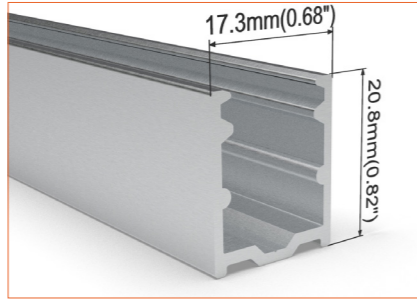
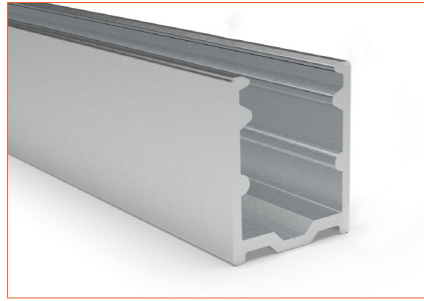
Bottom single wire end: 30cm/11.81" cable from left one only (bottom cable entry), other end with closed end cap.



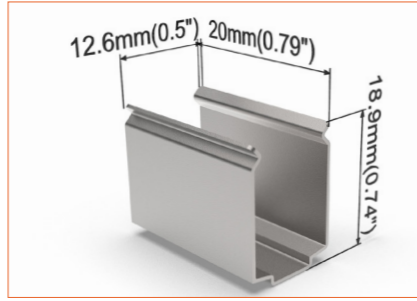
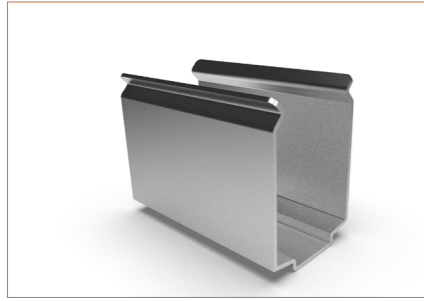
Closed end cap
Elegant injecting closed end cap in same size as neon flex body.



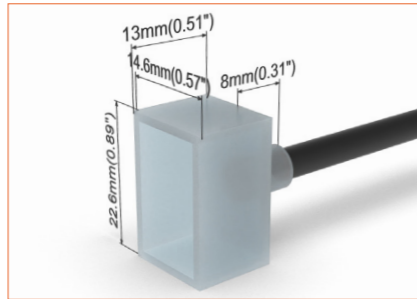
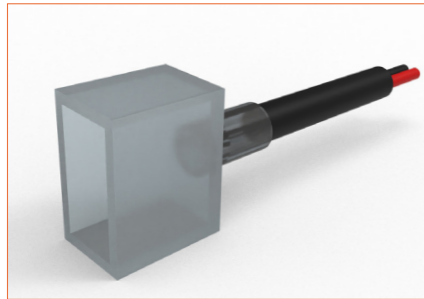
Beamever



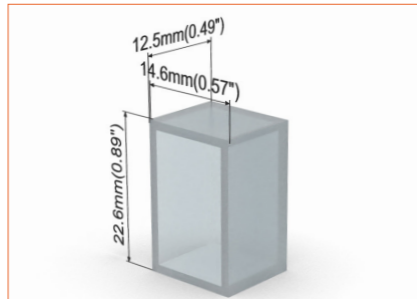
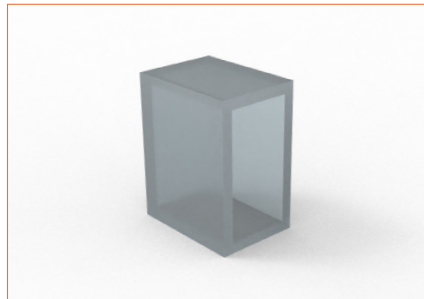
SC002
Straight aluminium channel
Length 1mtr/3.28ft



M0003
Stainless steel mounting clip



E0012
End cap with 30cm/11.81" cable



E0009
Closed end cap



Beamever

Address: 100 N Howard St Ste R,
Spokane, WA, 99201-0508 USA
Tel: 323-5104660
info@beamever.com
www.beamever.com