

Beamever

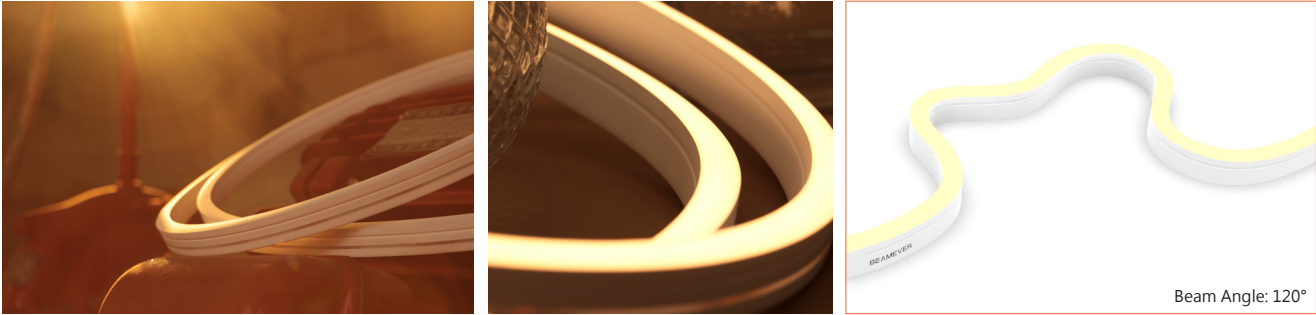
## UNIO NEON I220 SV

IP67 protection with high  
performance silicone, UV  
resistant, solvents resistant.  
Seamless line in 30Mtrs roll.

One BIN Only to ensure perfect  
color consistency



Beamever

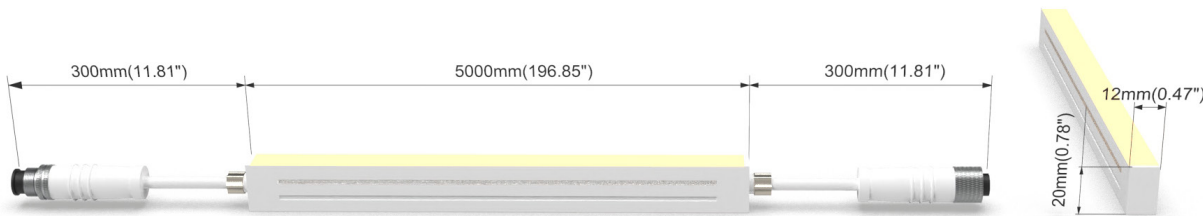
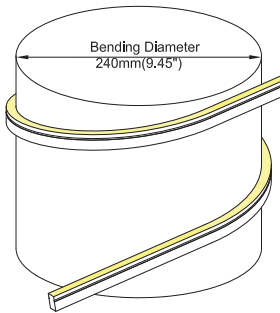


LINIO NEON 1220 SV

- Side view, horizontal bending with radius of 120mm/4.72".
- DC24V, and cross section size 12mm x 20mm /0.47" x 0.79" (W x H).
- IP67 protection, super high-end silicone, UV resistant, and solvents resistant.
- 30m/reel(98.43ft/reel) maximum. And the Max. Run length refers to single side feed in serial connection.
- Easy to be cut and reconnected at project sites. Also, custom length is available as well.
- Perfect color consistency thanks to 2-Step Lumileds LED.

Product Benefits:

- Homogeneous light effect & high color consistency.
- Extremely durable and flexible to let you explore more possibilities of lighting design.
- Great design in everything, such as luminaire's appearance, each of leds, WHT color, etc.



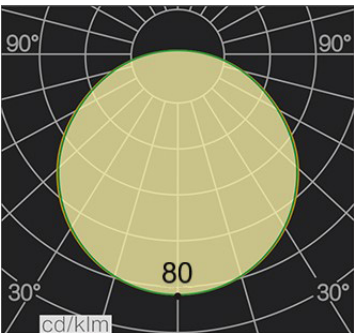
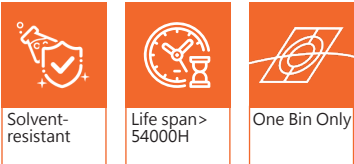
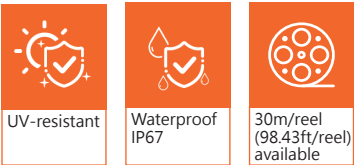
Electrical data

Voltage	DC24V (23.5V <sub>min</sub> 24.5V <sub>max</sub> )
LED PIN Temperature	Max. 65°C /149°F
Storage Temperature	-25°C /-13°F <sub>min</sub> 60°C /140°F <sub>max</sub>
Min. Ambient Tempt.(Ta <sub>min</sub> )	-25°C /-13°F
Max. Ambient Tempt.(Ta <sub>max</sub> )	55°C /131°F@1.52W, 45°C /113°F@3.05W, 35°C /95°F@4.57W
Power(W/ft)	1.52, 3.05, 4.57
Efficacy (lm/W)	30lm/W@4000K 1.52W, 35lm/W@4000K 3.05W, 32lm/W@4000K 4.57W
CRI	Ra94
Cut Increments	50mm/1.97"

Lumen/ft	1.52W	3.05W	4.57W
2700K	45	99	133
3000K	48	105	150
3500K	49	108	152
4000K	46	105	145
5300K	47	106	149
Max. Run Length(ft)	88.56	55.76	45.92

Important notice

- The given data are typical values due to the tolerances of the production process and the electrical components, values for light output and electrical power can vary up to 10%.
- The given color temperature is neon flex (after extrusion) color temperature.
- Standard cable length is 30cm/11.81", if longer cable required, please contact us.
- Male and female connectors are available if needed.
- It is IK08 rated. Please use protection materials if it is walk over application.



Order code

SERIES NAME	COLOR	LENGTH	POWER	CABLE ENTRY
LN1220SV	27= 2700K	1.97"-1181.10"	152=1.52W	F=FRONT
	30= 3000K		305=3.05W	S=SIDE
	35= 3500K		457=4.57W	B=BOTTOM
	40=4000K			
	53=5300K			

Example: LN1220SV-27-393.70-457-B: LINIO NEON 1220 SV 2700K, 393.70"/reel, 4.57W/ft, Bottom cable entry.



**Front Cable Entry**  
Suitable for power feed in or straight connection. Do not bend down or aside too sharp.



**Side Cable Entry**  
It can achieve perfect seamless light connection if the cabling space is allowed on the side.

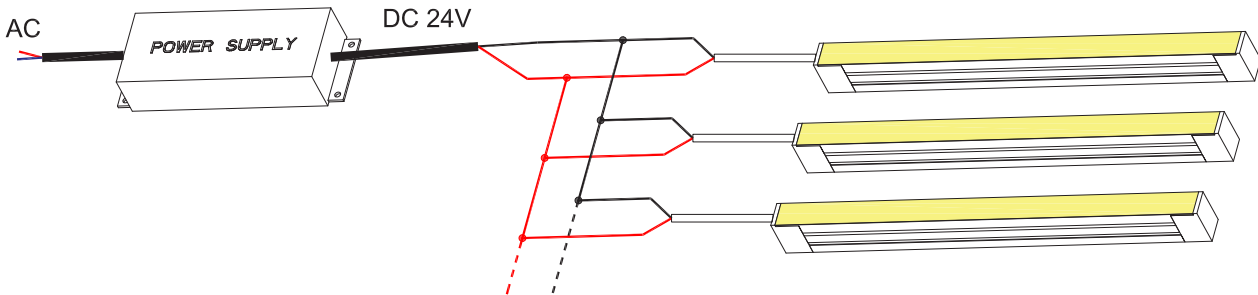


**Bottom Cable Entry**  
It can achieve perfect seamless light connection if the cabling space is allowed from the bottom.

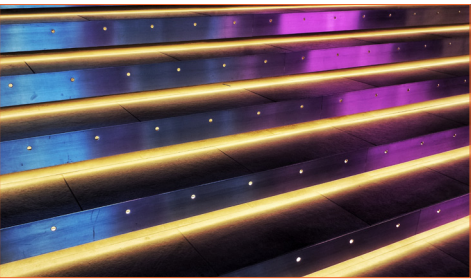
Accessories

Art.#	Description	Picture	Art.#	Description	Picture
SC002	1m/3.28ft anodized aluminium channel for LINIO NEON 1220 SV		MF013	Extension connectors, 1m/3.28ft IP67, 2PIN	
M0003	Stainless steel clip		MF014	Extension connectors, 5m/16.40ft IP67, 2PIN	
E0008	End cap with 30cm/11.81" cable 2PIN for LINIO NEON 1220 SV (Front / side /bottom cable entry)		XLG-150-24-A	PSU 24V/150W IP67, Non-dimmable, White, 100-305V supply	
E0009	Closed end cap for LINIO NEON 1220 SV		ELG-150-24B	PSU 24V/150W IP67, 3 in 1 dimming function, White, 100-305V supply	
G0002	Silicone glue		ELG-150-24DA	PSU 24V/150W IP67, DALI control technology, White, 100-305V supply	
MF012	Male and female connectors, 30cm/11.81" IP67, 2PIN				

Wiring connection



Application

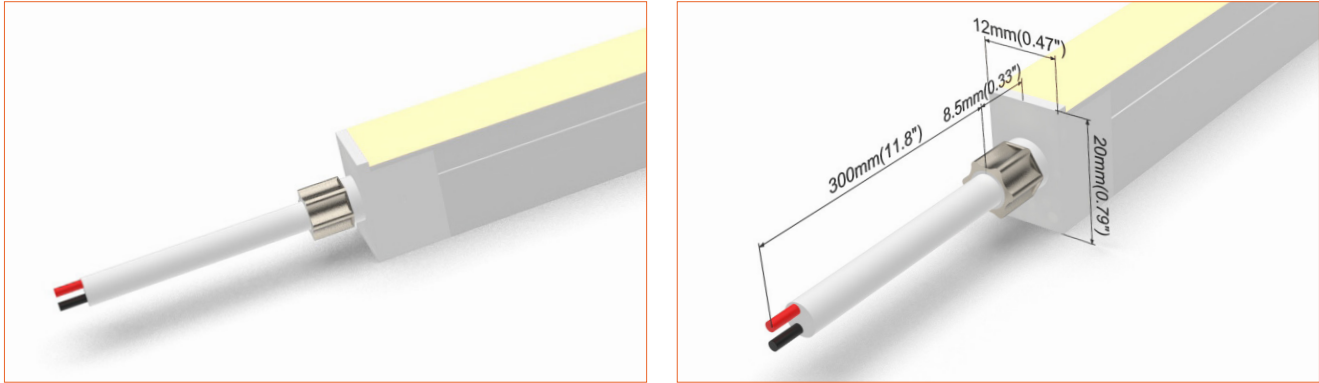


Where to use the product?

LINIO NEON 1220 SV is one of the most popular and helpful flexible light sources, which helps you to achieve different lighting goals. The super stunning outcome, with high-end quality of raw material, and after-sales service that will stay open for any feedback possibilities. It can bring homogeneous lighting and allows you to explore more inspiration during different types of projects.

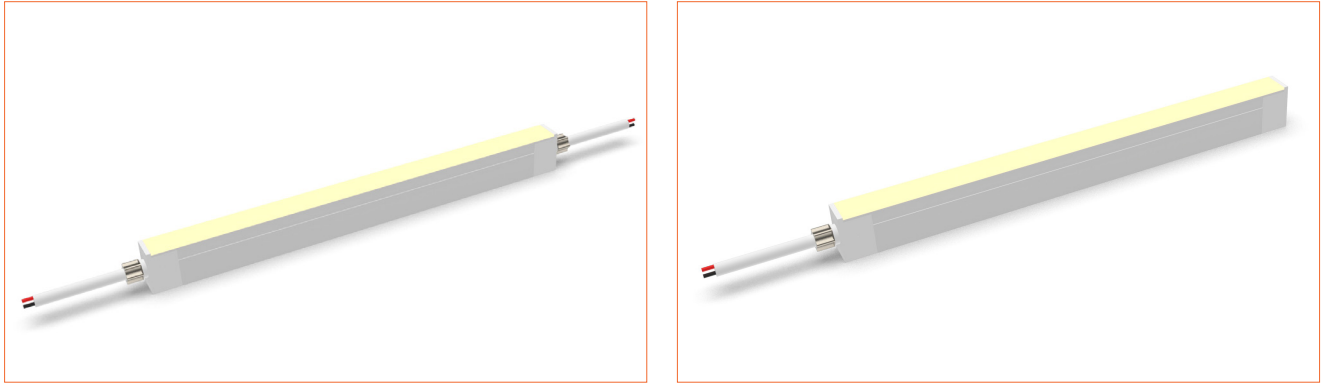
More specifically, it can help any exterior and interior lighting projects, such as within shopping malls, exhibition halls, commercial offices, schools, personal houses, etc. A lot of applications meet your needs, and will never let you down. Trust is the key point!

Front Cable Entry  
Suitable for power feed in or straight connection. Do not bend down or aside too sharp.

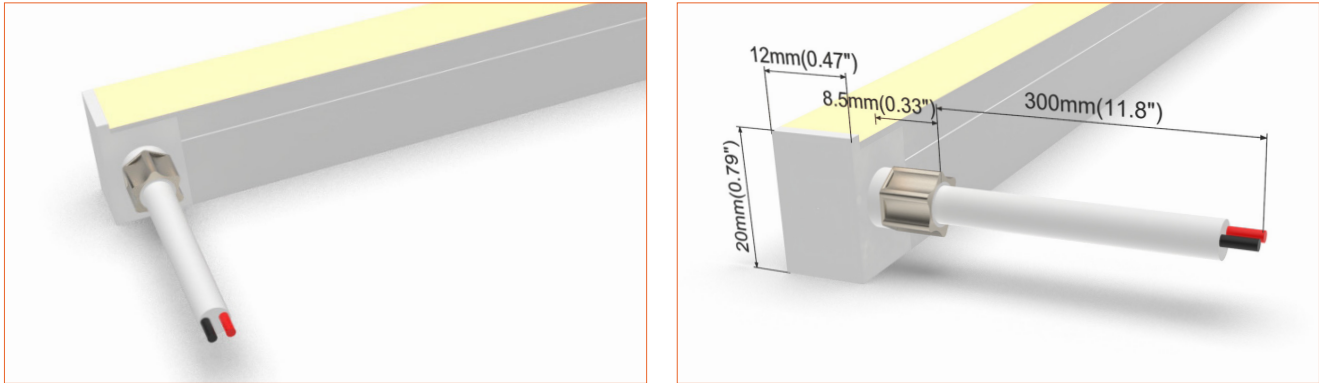


Front double wire end: 30cm/11.81" cable from two ends, front cable entry.

Front single wire end: 30cm/11.81" cable from one end, front cable entry.

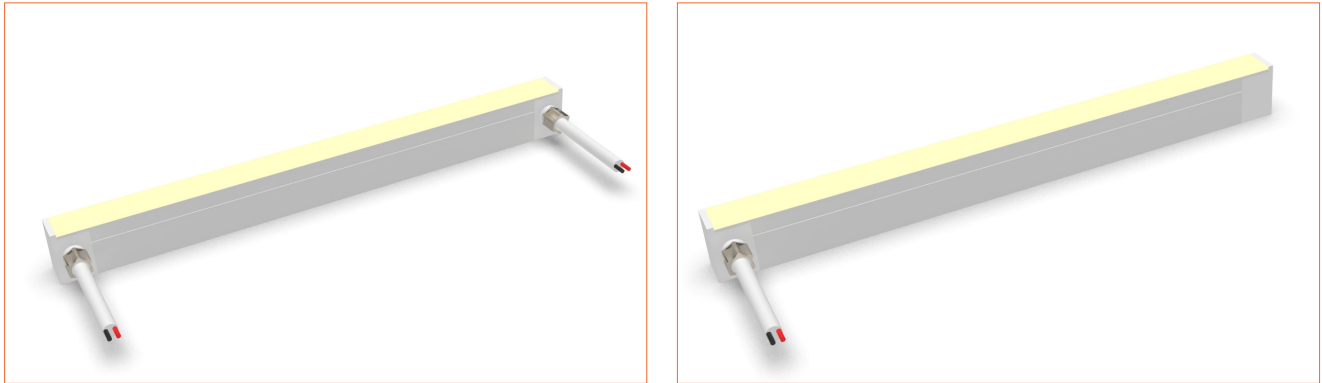


Side Cable Entry  
It can achieve perfect seamless light connection if the cabling space is allowed on the side.

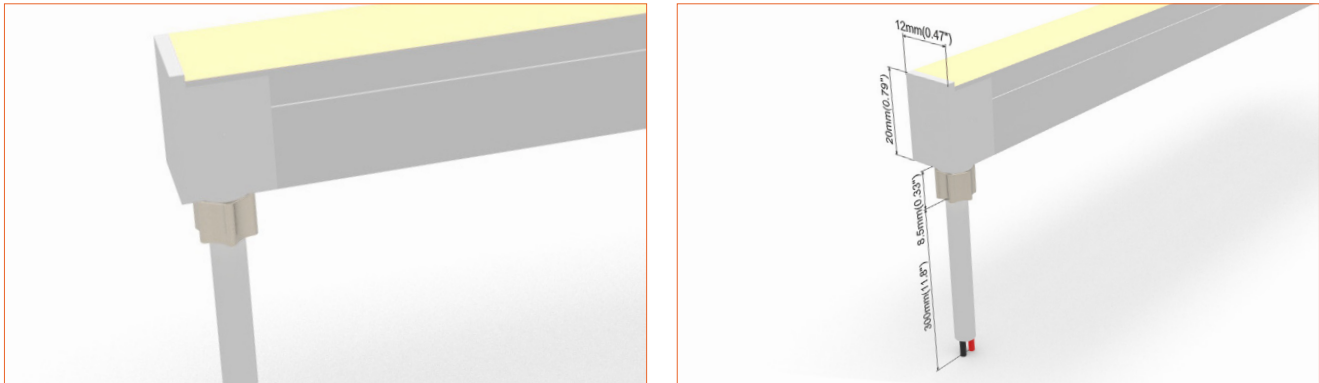


Side double wire end: 30cm/11.81" cable from two ends, side cable entry.

Side single wire end: 30cm/11.81" cable from left one only (side cable entry), other end with closed end cap.



Bottom Cable Entry  
It can achieve perfect seamless light connection if the cabling space is allowed from the bottom.

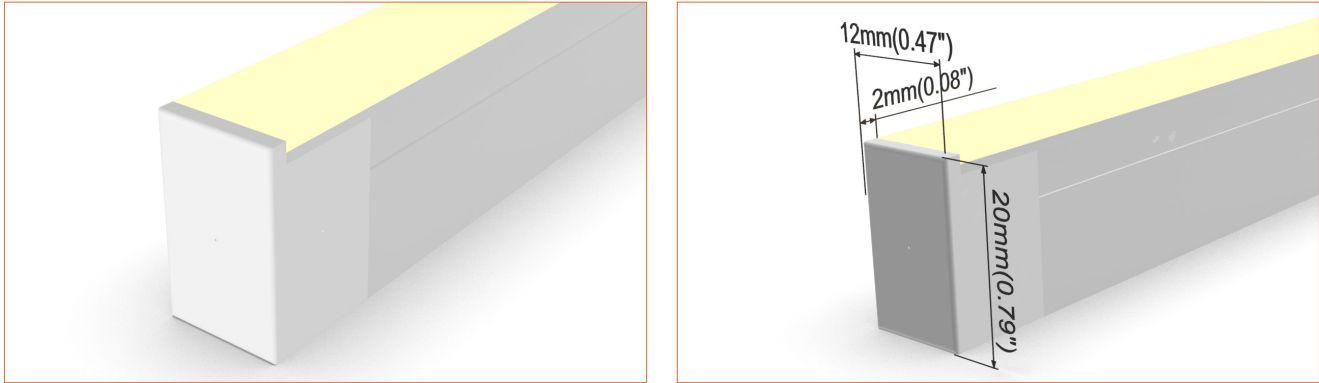


Bottom double wire end: 30cm/11.81" cable from two ends, bottom cable entry.

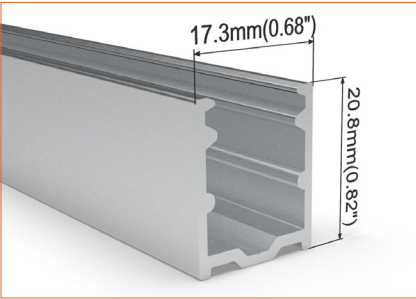
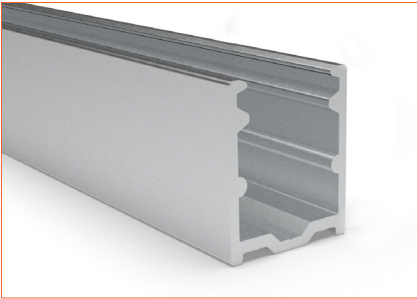
Bottom single wire end: 30cm/11.81" cable from left one only (bottom cable entry), other end with closed end cap.



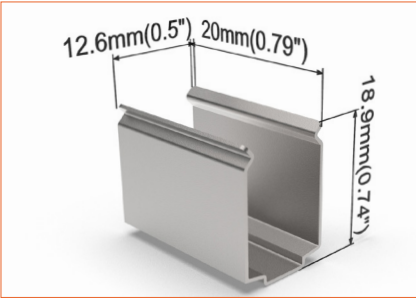
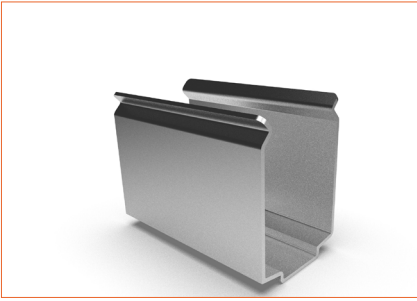
Closed end cap  
Elegant injecting closed end cap in same size as neon flex body.



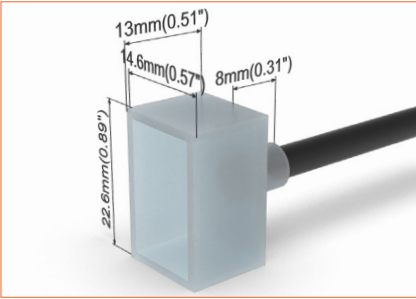
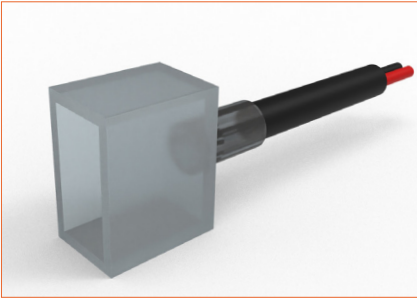




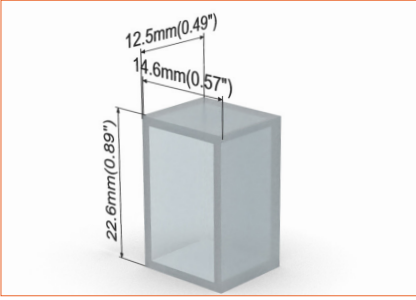
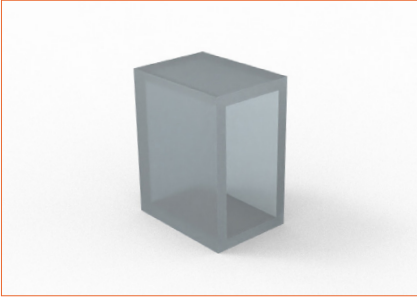
SC002  
Straight aluminium channel  
Length 1mtr/3.28ft



M0003  
Stainless steel mounting clip



E0008  
End cap with 30cm/11.81" cable



E0009  
Closed end cap