

## LINIO NEON I220 SV TW

IP67 protection with high  
performance silicone, UV  
resistant, solvents resistant.  
Seamless line in 30Mtrs roll.

One BIN Only to ensure perfect  
color consistency



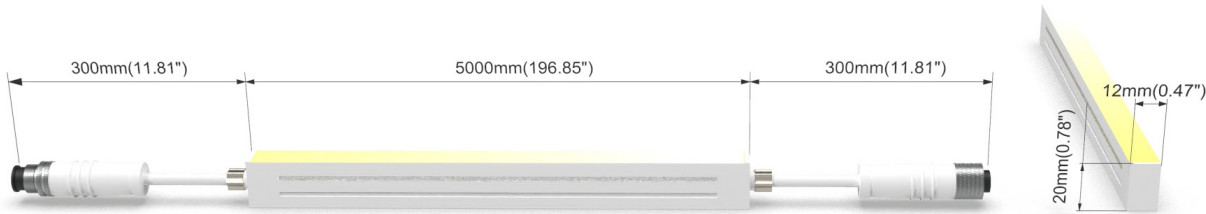
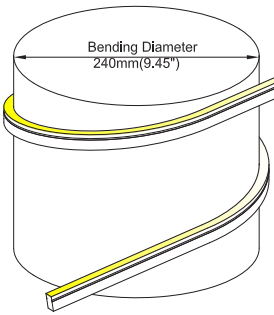


LINIO NEON 1220 SV TW

- Side view, horizontal bending with radius of 120mm/4.72".
- DC24V, with cross section size 12mm x 20mm /0.47" x 0.79" (W x H).
- IP67 waterproof, UV resistant, and solvents resistant as protections.
- 30m/reel(98.43ft/reel) maximum. Max. Run length refers to single side feed in serial connection.
- Easy to be cut and reconnected at project sites if need.
- Perfect color consistency thanks to 2-Step Lumileds LED.

Product Benefits:

- Homogeneous light outcome with super high-color-consistency.
- Extremely durable as a long-term and trustful application.
- Very nice design as product outside look, and inside technology.



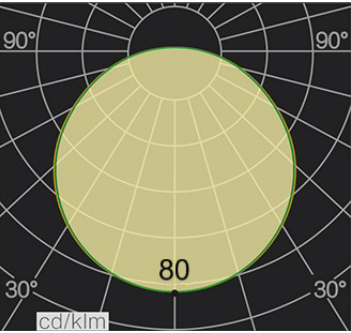
Electrical data

Voltage	DC24V (23.5V <sub>min</sub> 24.5V <sub>max</sub> )
LED PIN Temperature	Max. 65°C /149°F
Storage Temperature	-25°C /-13°F <sub>min</sub> 60°C /140°F <sub>max</sub>
Ambient Temperature	Ta <sub>min</sub> = -25°C /-13°F; Ta <sub>max</sub> =35°C /95°F@4.57W Ta <sub>max</sub> =45°C /113°F@2.29W(Single Color)
Power(W/ft)	4.57
Efficacy (lm/W)	35lm/W@2700K+5300K 4.57W
CRI	80

CCT	Lumen/ft	Max. Watt (W/ft)	Max. Run Length (ft)	Cut Increments (inch)
2700K	82	2.29	16.40	1.97
5300K	82	2.29	16.40	1.97
2700K+5300K	159	4.57	16.40	1.97

Important notice

- The given data are typical values due to the tolerances of the production process and the electrical components, values for light output and electrical power can vary up to 10%.
- The given color temperature is neon flex (after extrusion) color temperature.
- Standard cable length is 30cm/11.81", if longer cable required, please contact us.
- Male and female connectors are available if needed.
- It is IK08 rated. Please use protection materials if it is walk over application.



Order code

SERIES NAME	COLOR	LENGTH	POWER	CABLE ENTRY
LN1220SV TW	2753= 2700+5300K	1.97"-1181.10"	457=4.57W	F=FRONT S=SIDE B=BOTTOM



**Front Cable Entry**  
Suitable for power feed in or straight connection. Do not bend down or aside too sharp.



**Side Cable Entry**  
It can achieve perfect seamless light connection if the cabling space is allowed on the side.



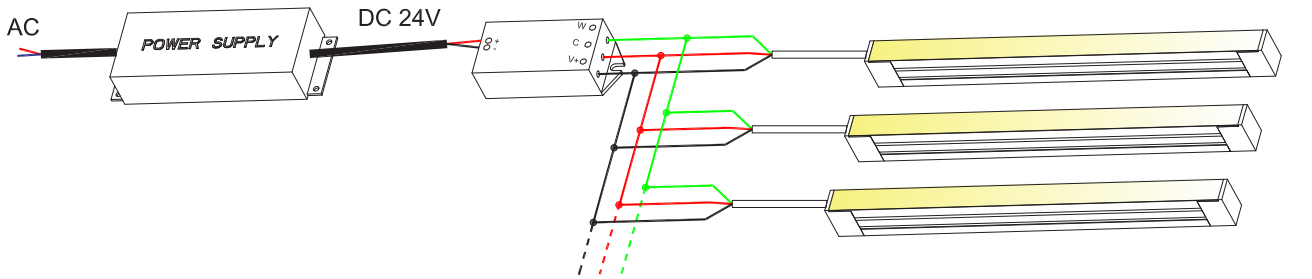
**Bottom Cable Entry**  
It can achieve perfect seamless light connection if the cabling space is allowed from the bottom.

Example: LN1220SV TW-2753-59.06-457-F: LINIO NEON 1220 SV TW 2700K+5300K, 59.06"/reel, 4.57W/ft, Front cable entry.

Accessories

Art.#	Description	Picture	Art.#	Description	Picture
SC002	1m/3.28ft anodized aluminium channel for LINIO NEON 1220 SV		MF016	Extension connectors, 1m/3.28ft IP67, 3PIN	
M0003	Stainless steel clip		MF017	Extension connectors, 5m/16.40ft IP67, 3PIN	
E0010	End cap with 30cm/11.81" cable 3PIN for LINIO NEON 1220 SV TW (Front / side /bottom cable entry)		XLG-150-24-A	PSU 24V/150W IP67, Non-dimmable, White, 100-305V supply	
E0009	Closed end cap for LINIO NEON 1220 SV TW		ELG-150-24B	PSU 24V/150W IP67, 3 in 1 dimming function, White, 100-305V supply	
G0002	Silicone glue		ELG-150-24DA	PSU 24V/150W IP67, DALI control technology, White, 100-305V supply	
MF015	Male and female connectors, 30cm/11.81" IP67, 3PIN		M2+M3-3A	RF Controller 144W DC24V, 3A*2Channel, Max 6A IP20, Support remote control	

Wiring connection



Application

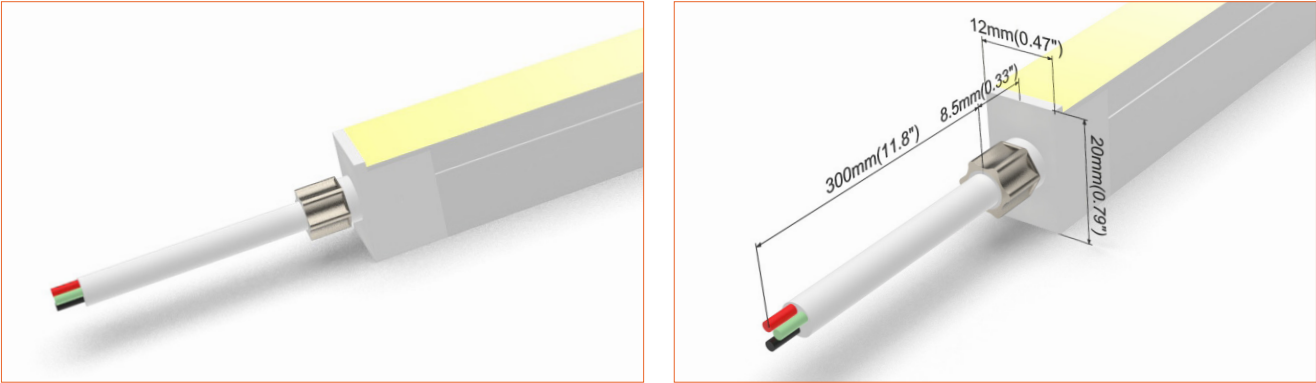


Where to use the product?

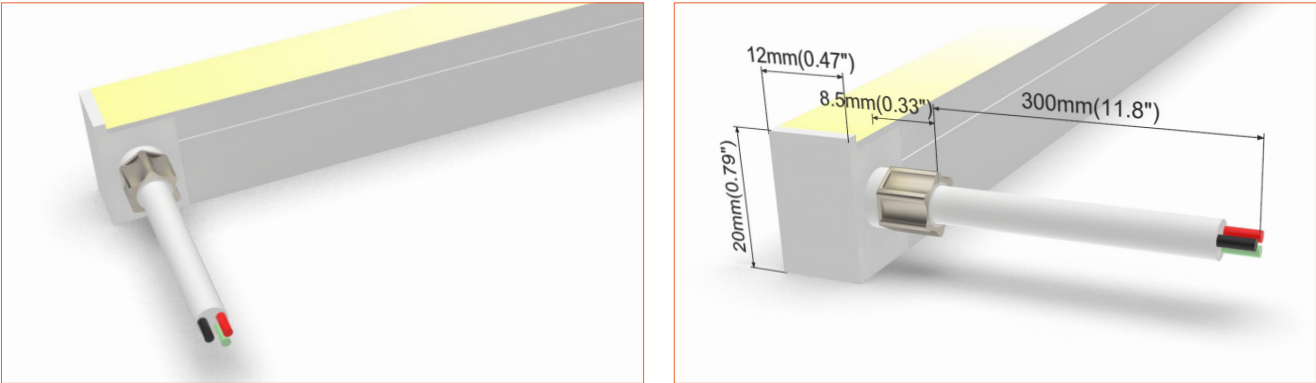
LINIO NEON 1220 SV TW can bring super homogeneous lighting to your interior and exterior projects. Super effectively and elegantly highlight any certain areas you need. Similar applications, for example in an architectural lighting project, that either tracing straight, curved, and even round contours with even lighting.

With the cold white and the warm white in one perfect neon flex, you can create a different atmosphere by changing the color temperature as you wish. And it is a perfect linear solution for wall integration, landscape lighting, and other different types of applications. Super charming and impressive with our LINIO NEON 1220 SV TW application.

Front Cable Entry  
Suitable for power feed in or straight connection. Do not bend down or aside too sharp.



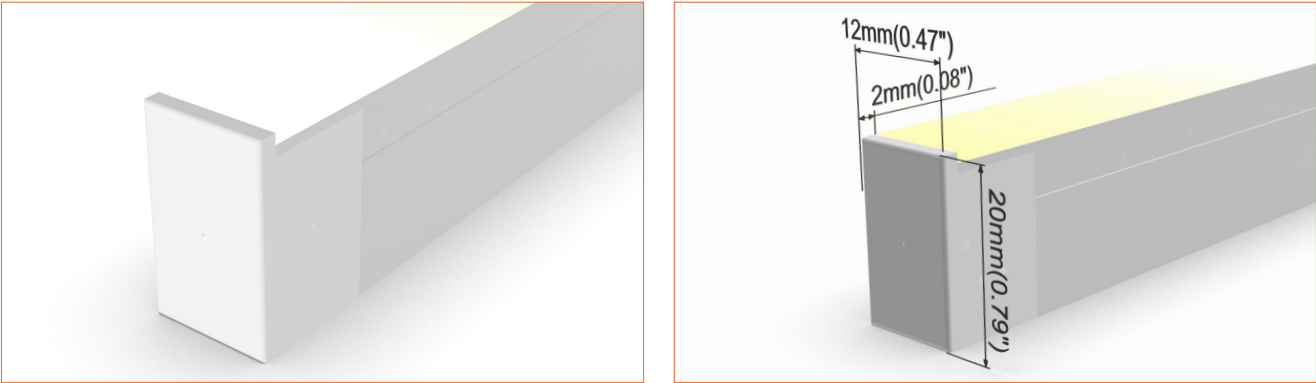
Side Cable Entry  
It can achieve perfect seamless light connection if the cabling space is allowed on the side.



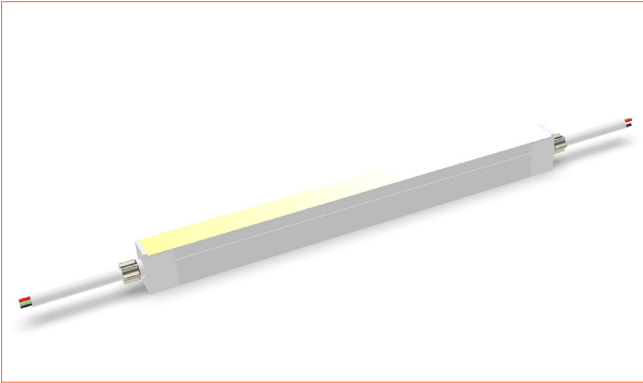
Bottom Cable Entry  
It can achieve perfect seamless light connection if the cabling space is allowed from the bottom.



Closed end cap  
Elegant injecting closed end cap in same size as neon flex body.



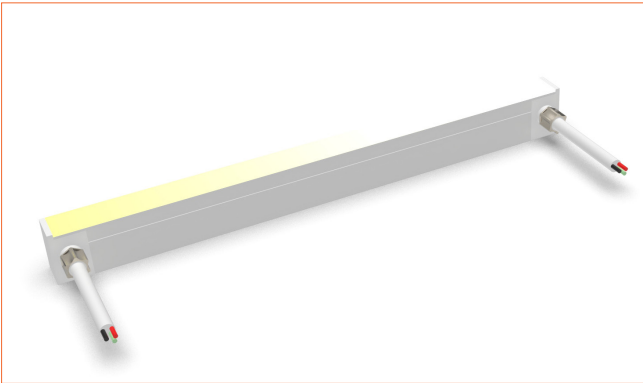
Front double wire end: 30cm/11.81" cable from two ends, front cable entry.



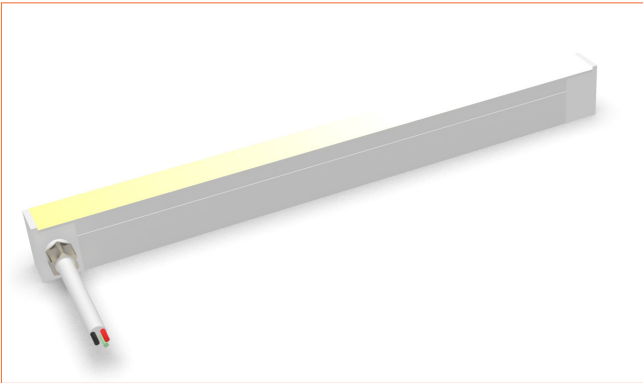
Front single wire end: 30cm/11.81" cable from one end, front cable entry.



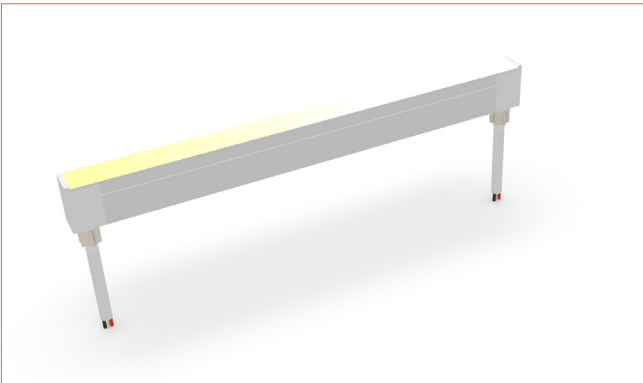
Side double wire end: 30cm/11.81" cable from two ends, side cable entry.



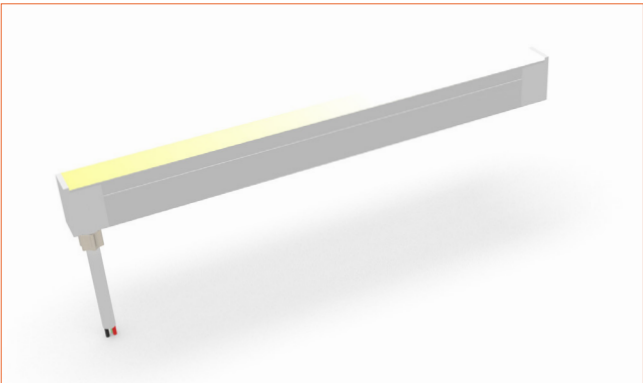
Side single wire end: 30cm/11.81" cable from left one only (side cable entry), other end with closed end cap.



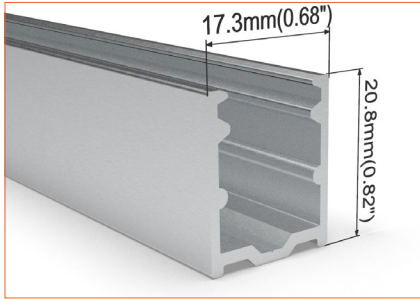
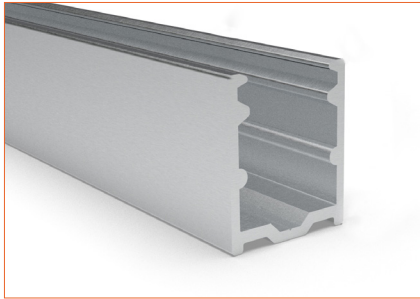
Bottom double wire end: 30cm/11.81" cable from two ends, bottom cable entry.



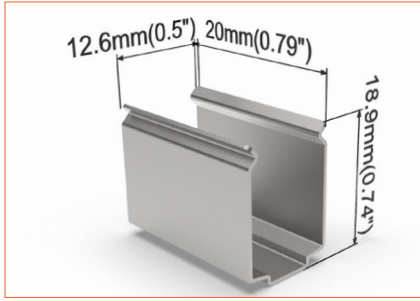
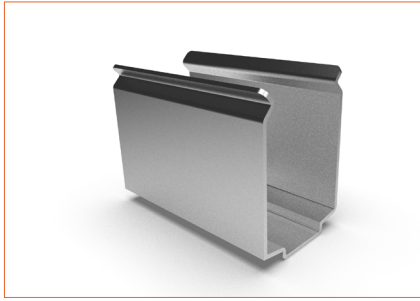
Bottom single wire end: 30cm/11.81" cable from left one only (bottom cable entry), other end with closed end cap.



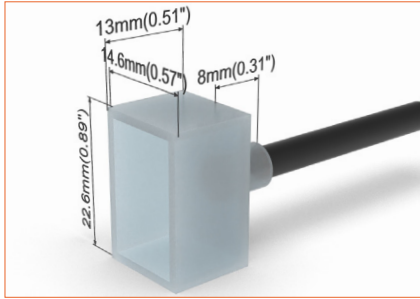
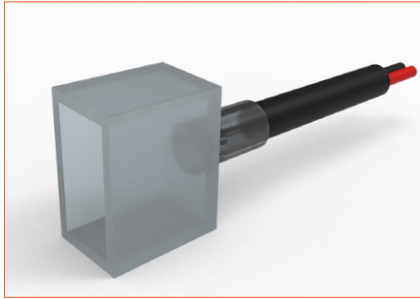




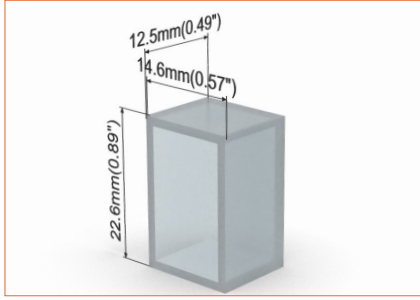
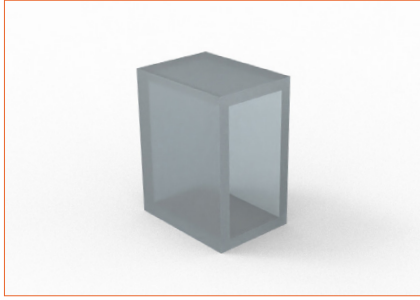
SC002  
Straight aluminium channel  
Length 1mtr/3.28ft



M0003  
Stainless steel mounting clip



E0010  
End cap with 30cm/11.81" cable



E0009  
Closed end cap