

Beamever

LINIO NEON I220 5V RGB

IP67 protection with high performance silicone, UV resistant, solvents resistant. Seamless line in 30Mtrs roll.

One BIN Only to ensure perfect color consistency



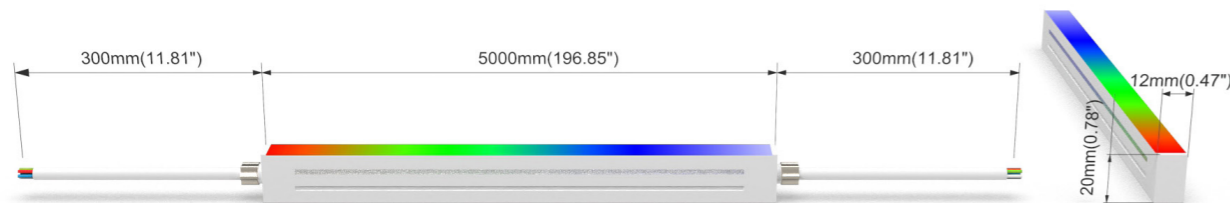
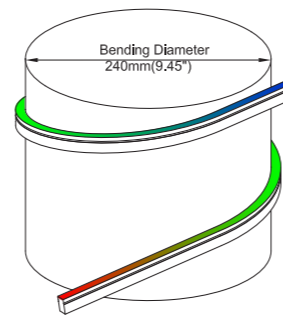


LINIO NEON 1220 SV RGB

- Side view, and horizontal bending with radius of 120mm/4.72".
- DC24V, cross section size 12mm x 20mm /0.47" x 0.79" (W x H).
- IP67 waterproof, UV resistant, solvents resistant, dust-free as protections.
- 30m/reel(98.43ft/reel) maximum. Max. Run length refers to single side feed in serial connection.
- Easy to be cut and reconnected at project sites.
- Custom length is available as well if need.
- Offer millions of colors using red-green-blue color mixing.

Product Benefits:

- Offers the best homogeneous and flawless luminance to each corner shined.
- Durable and trustful as a long-term application to save your time and costs.
- Well-designed, and 'green-energy' to stay healthy and beautiful all the time.

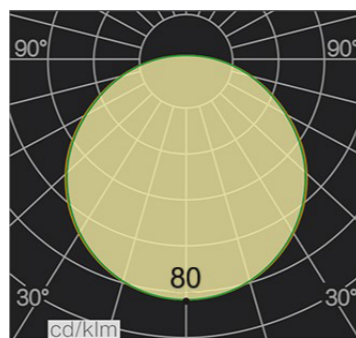


Electrical data

Voltage	DC24V (23.5V _{min} 24.5V _{max})
LED PIN Temperature	Max. 65°C /149°F
Storage Temperature	-25°C /-13°F _{min} 60°C /140°F _{max}
Ambient Temperature	Ta _{min} = -25°C /-13°F; Ta _{max} = 35°C /95°F@3.35W Ta _{max} = 50°C /122°F@1.13W(Single Color)
Power(W/ft)	3.35
Efficacy (lm/W)	18lm/W@RGB 3.35W



CCT	Lumen/ft	Max. Watt (W/ft)	Max. Run Length (ft)	Cut Increments (inch)
R	13	1.13	42.64	4.92
G	43	1.13	42.64	4.92
B	7	1.13	42.64	4.92
RGB	61	3.35	42.64	4.92



Important notice

- The given data are typical values due to the tolerances of the production process and the electrical components, values for light output and electrical power can vary up to 10%.
- The given color temperature is neon flex (after extrusion) color temperature.
- Standard cable length is 30cm/11.81", if longer cable required, please contact us.
- Male and female connectors are available if needed.
- It is IK08 rated. Please use protection materials if it is walk over application.



Order code

SERIES NAME	COLOR	LENGTH	POWER	CABLE ENTRY
LN1220SV RGB	RGB	4.92"-1181.10"	335=3.35W	F=FRONT S=SIDE B=BOTTOM



Front Cable Entry
Suitable for power feed in or straight connection. Do not bend down or aside too sharp.



Side Cable Entry
It can achieve perfect seamless light connection if the cabling space is allowed on the side.



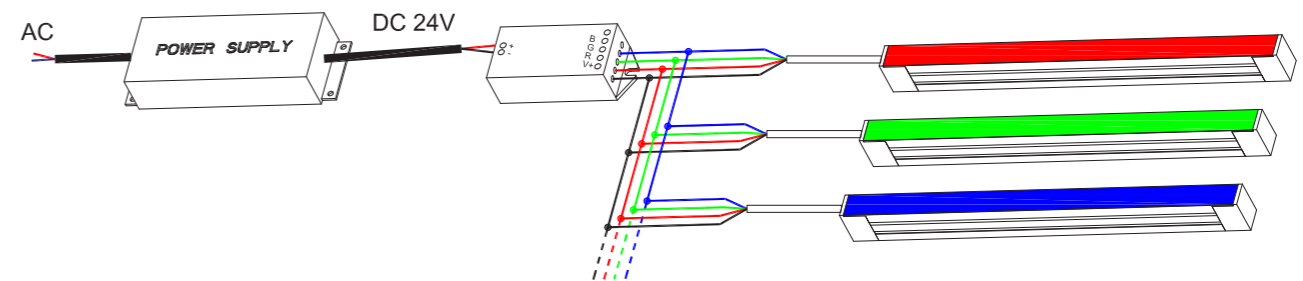
Bottom Cable Entry
It can achieve perfect seamless light connection if the cabling space is allowed from the bottom.

Example: LN1220SV RGB-137.80-335-F: LINIO NEON 1220 SV RGB , 137.80"/reel, 3.35W/ft, Front cable entry.

Accessories

Art.#	Description	Picture	Art.#	Description	Picture
SC002	1m/3.28ft anodized aluminium channel for LINIO NEON 1220 SV		MF019	Extension connectors, 1m/3.28ft IP67, 4PIN	
M0003	Stainless steel clip		MF020	Extension connectors, 5m/16.40ft IP67, 4PIN	
E0011	End cap with 30cm/11.81" cable 4PIN for LINIO NEON 1220 SV RGB (Front / side /bottom cable entry)		XLG-150-24-A	PSU 24V/150W IP67, Non-dimmable, White, 100-305V supply	
E0009	Closed end cap for LINIO NEON 1220 SV RGB		ELG-150-24B	PSU 24V/150W IP67, 3 in 1 dimming function, White, 100-305V supply	
G0002	Silicone glue		ELG-150-24DA	PSU 24V/150W IP67, DALI control technology, White, 100-305V supply	
MF018	Male and female connectors, 30cm/11.81" IP67, 4PIN		M6+M3-3A	RF Controller 216W DC24V, 3A*3Channel, Max 9A IP20, Support remote control	

Wiring connection



Application



Where to use the product?

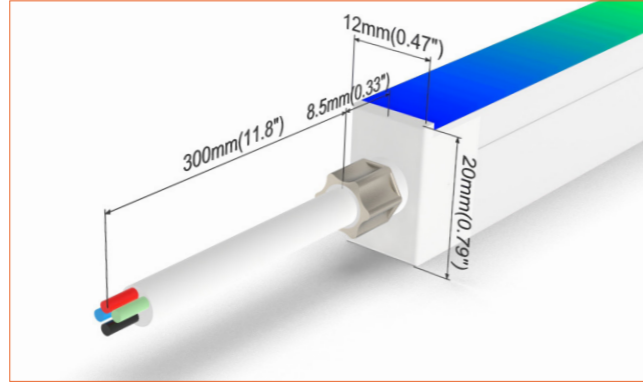
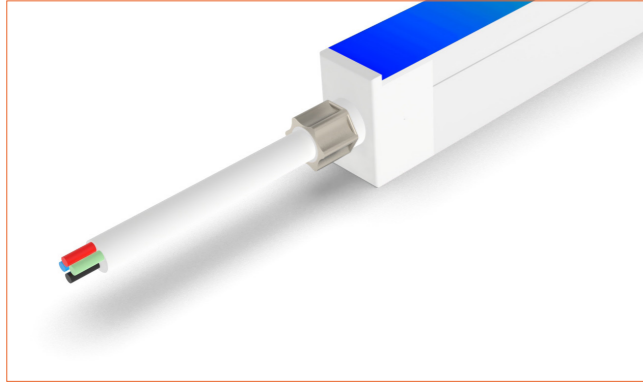
LINIO NEON 1220 SV RGB offers you more color possibilities, and it is good at handling different color-mixing. Homogeneous, gorgeous, and super-eyecatching lighting outcome.

It can be used for commercial purposes, such as to decorate business meeting rooms for international trade discussions; to beautify the exhibition rooms, as Gucci new product promotion lights up; or to modify the environment for high-end hotels, etc.

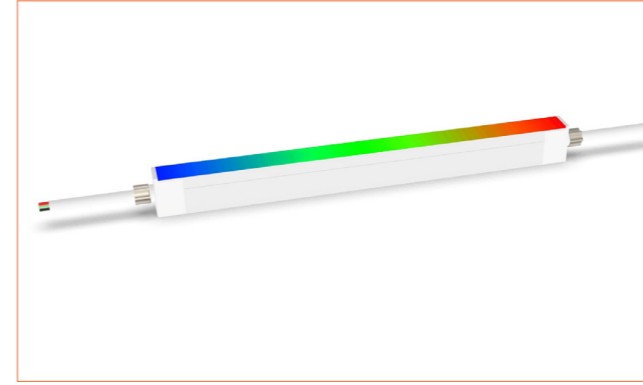
Beamever

Front Cable Entry

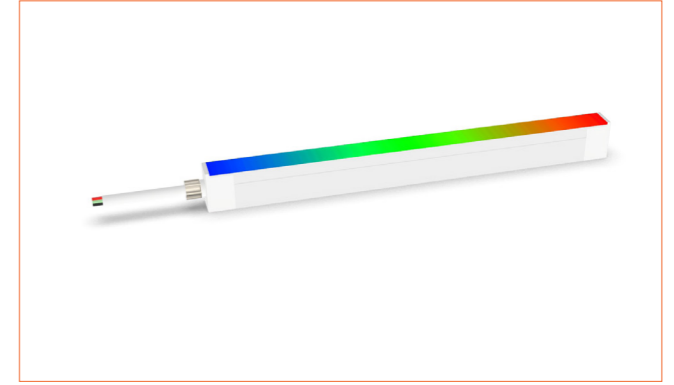
Suitable for power feed in or straight connection. Do not bend down or aside too sharp.



Front double wire end: 30cm/11.81" cable from two ends, front cable entry.

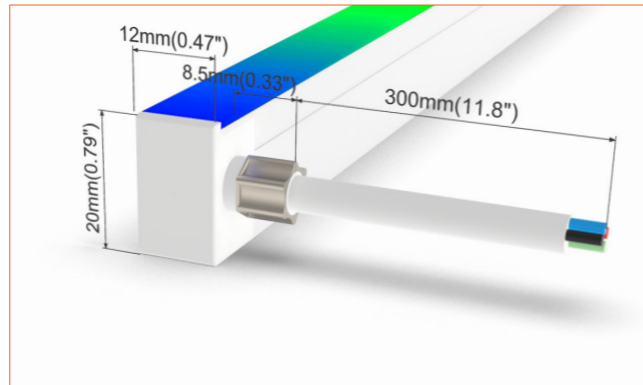
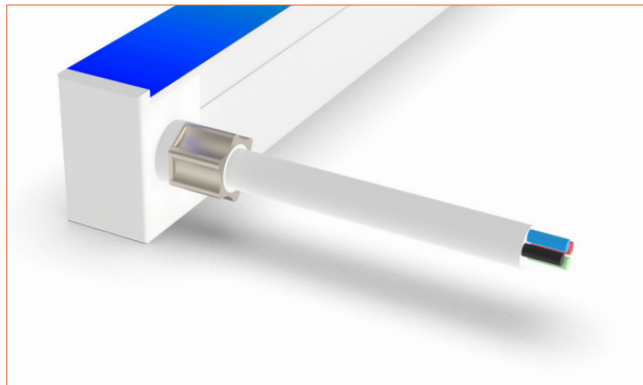


Front single wire end: 30cm/11.81" cable from one end, front cable entry.



Side Cable Entry

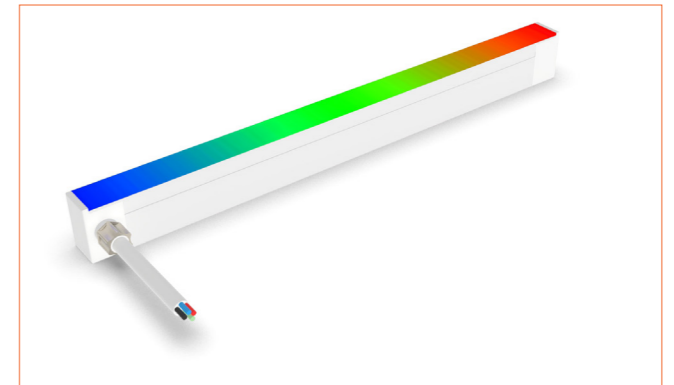
It can achieve perfect seamless light connection if the cabling space is allowed on the side.



Side double wire end: 30cm/11.81" cable from two ends, side cable entry.

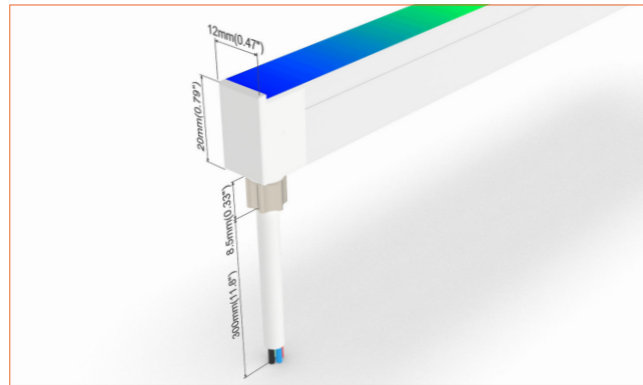


Side single wire end: 30cm/11.81" cable from left one only (side cable entry), other end with closed end cap.

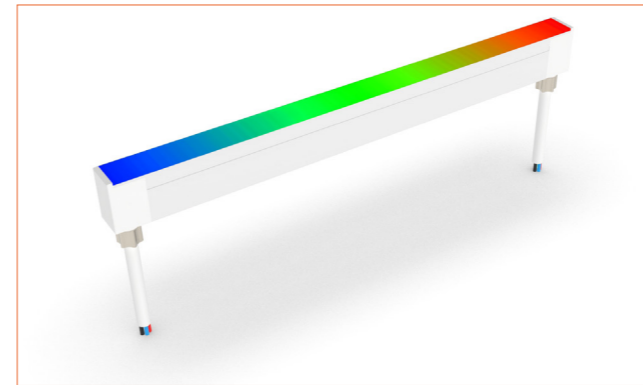


Bottom Cable Entry

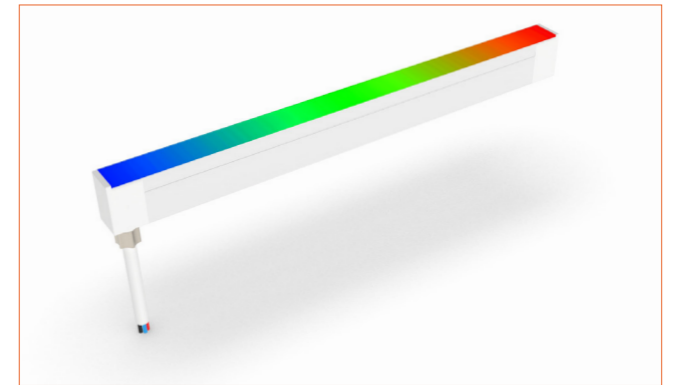
It can achieve perfect seamless light connection if the cabling space is allowed from the bottom.



Bottom double wire end: 30cm/11.81" cable from two ends, bottom cable entry.

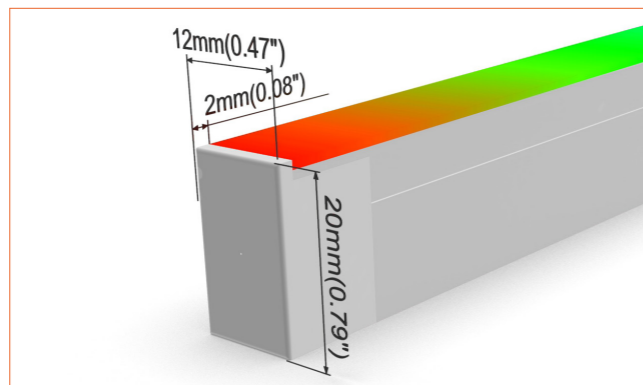
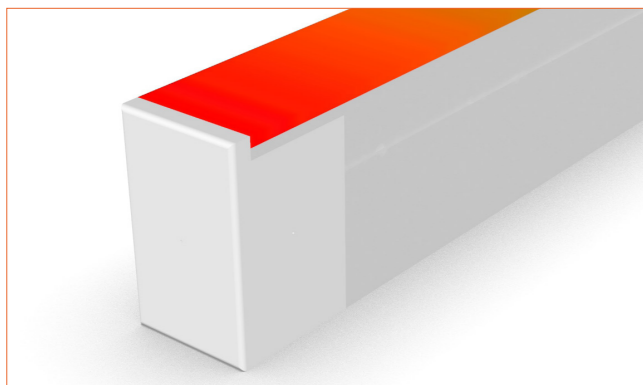


Bottom single wire end: 30cm/11.81" cable from left one only (bottom cable entry), other end with closed end cap.

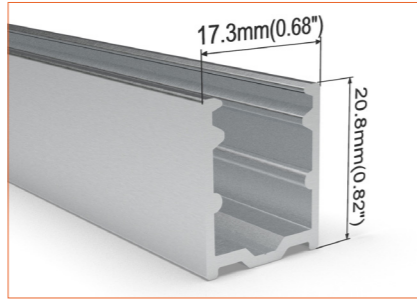
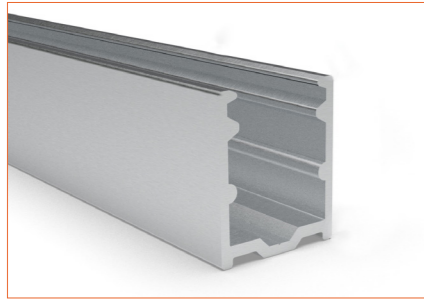


Closed end cap

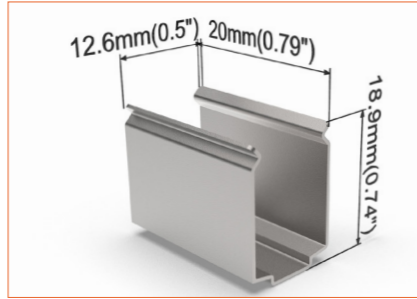
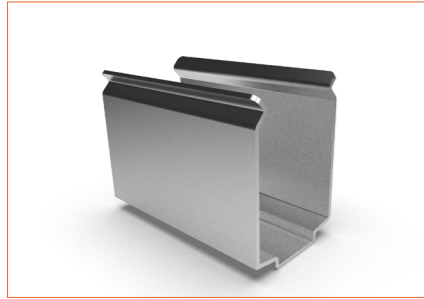
Elegant injecting closed end cap in same size as neon flex body.



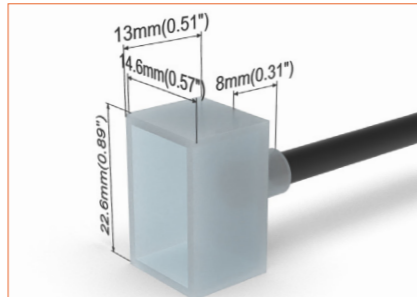
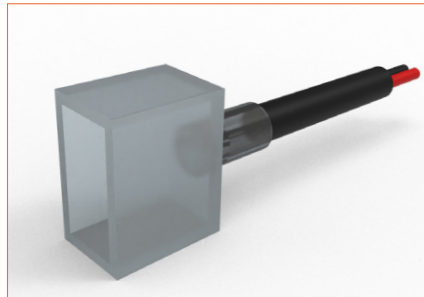
Beamever



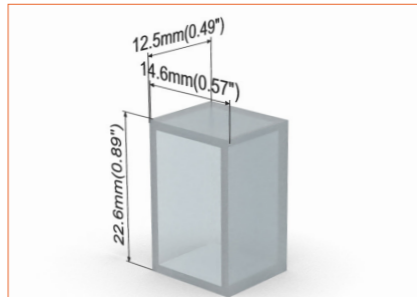
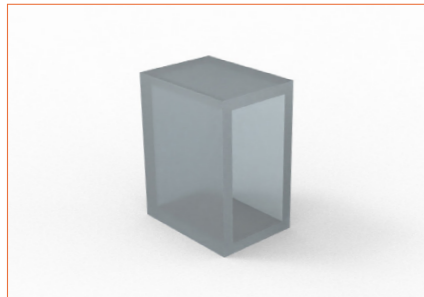
SC002
Straight aluminium channel
Length 1mtr/3.28ft



M0003
Stainless steel mounting clip



E0011
End cap with 30cm/11.81" cable



E0009
Closed end cap



Beamever

Address: 100 N Howard St Ste R,
Spokane, WA, 99201-0508 USA
Tel: 323-5104660
info@beamever.com
www.beamever.com