



Beamever

LINEO NEON I2I2 TV RGB

IP67 protection with high performance silicone, UV resistant, solvents resistant. Seamless line in 30Mtrs roll.

One BIN Only to ensure perfect color consistency

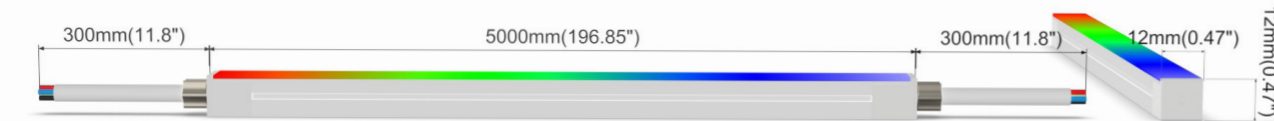
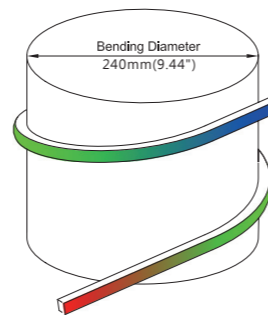


LINIO NEON 1212 TV RGB

- Top view, and vertical bending with radius of 120mm / 4.72".
- DC24V, and cross section size with 12mm x 12mm / 0.47" x 0.47" (WxH).
- IP67 protection, high-end quality of silicone, UV resistant, and solvents resistant.
- Max. production length of 30m/reel (98.43ft/reel).
- Offer various colors using red-green-blue color mixing.
- Super flexible, reconnect-able, and cuttable to satisfy lighting project needs.

Product Features:

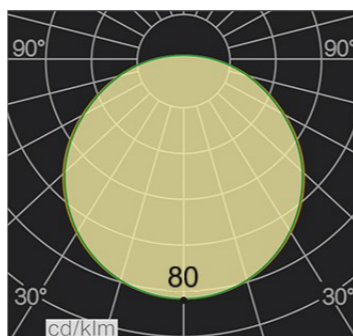
- Homogeneous and gorgeous luminance 24/7 for you.
- Super durable for long-term application to save cost.
- Well-designed, excellent for architectural lighting application.



Electrical data

Voltage	DC24V (23.5V _{min} , 24.5V _{max})
LED PIN Temperature	Max. 65°C /149°F
Storage Temperature	-25°C /-13°F _{min} , 60°C /140°F _{max}
Ambient Temperature	Ta _{min} = -25°C /-13°F; Ta _{max} =45°C /113°F
Power(W/m W/ft)	10/3.1
Efficacy(lm/W)@5700K	24.2
Unit Cut	62.5mm/2.46"

UV-resistant	Waterproof IP67	30m/reel (98.43ft/reel) available
Solvent-resistant	Life span > 30000H	One Bin Only



CCT	Lumen/ft	Max. Watt (W/ft)	Max. Run Length (ft)	DIY End cap Max. Run Length(ft)
R	16.5	1	16.4	16.4
G	48.8	1	16.4	16.4
B	9.8	1	16.4	16.4
RGB	73.8	3	16.4	16.4

Important notice

- The given data are typical values due to the tolerances of the production process and the electrical components, values for light output and electrical power can vary up to 10%.
- The given color temperature is neon flex (after extrusion) color temperature.
- Standard cable length is 30cm/11.81", if longer cable required, please contact us.
- Male and female connectors are available if needed.
- It is IK08 rated. Please use protection materials if it is walk over application.

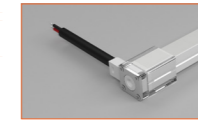


Order code

SERIES NAME	COLOR	LENGTH	POWER	CABLE ENTRY
LN1212RGB	RGB	39370=393.70"/10M	304=3.04W	F=FRONT S=SIDE B=BOTTOM



Front Cable Entry
Suitable for power feed in or straight connection. Do not bend down or aside too sharp.



Side Cable Entry
It can achieve perfect seamless light connection if the cabling space is allowed on the side.



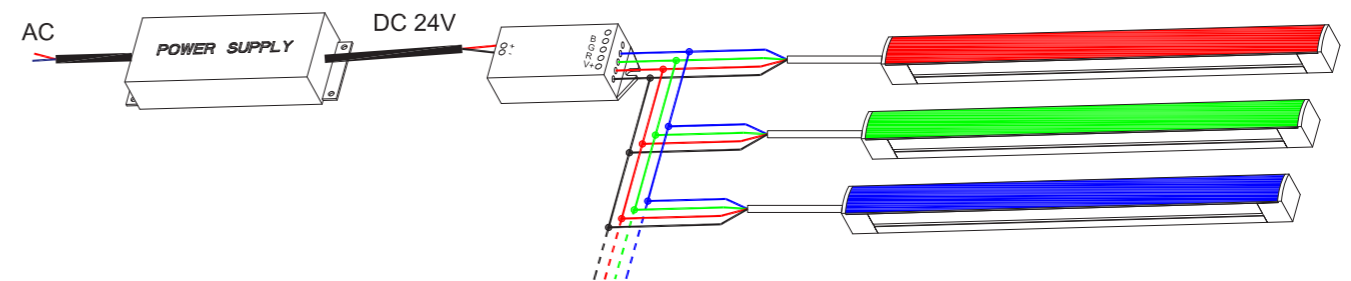
Bottom Cable Entry
It can achieve perfect seamless light connection if the cabling space is allowed from the bottom.

Example: LN1212 RGB-39370-304-F: LINIO NEON 1212 RGB, 393.7"/reel, 3.04W/m, Front cable entry.

Accessories

Art.#	Description	Picture	Art.#	Description	Picture
SC014	1m anodized aluminium channel for LINIO NEON 1212 TV RGB		MF018	Male and female connectors, 30cm/11.81" IP67, 4PIN	
MO027	Clips 20mm 316L (Clip required every 25cm, stainless steel)		MF019	Extension connectors, 1m/3.28ft IP67, 4PIN	
E0044	End cap with 30cm cable 4PIN for LINIO NEON 1212 TV RGB		MF020	Extension connectors, 5m/16.40ft IP67, 4PIN	
E0040	Closed end cap for LINIO NEON 1212 TV RGB		XLG-150-24-A	PSU 24V/150W IP67, Non-dimmable, White, 100-305V supply	
E0045	Assembly End Cap 4PIN		ELG-150-24B	PSU 24V/150W IP67, 3 in 1 dimming function, White, 100-305V supply	
E0040	Assembly Closed End Cap		M6+M3-3A	RF Controller 216W DC24V, 3A*3Channel, Max 9A IP20, Support remote control	

Wiring connection



Application



Where to use the product?

LINIO NEON 1212 TV RGB will enable more color-mixing through red-green-blue combo. More possibilities, more inspirations, and more achievements. Seek any new ideas in lighting projects, satisfy lighting designers' different expectations.

You can apply it in fancy restaurants, airports, shopping malls, apartments, corporate offices, etc. Countless applications, just unlock your imaginations, and explore a more creative lighting design world.



Beamever

Address: 100 N Howard St Ste R,
Spokane, WA, 99201-0508 USA
Tel: 323-5104660
info@beamever.com
www.beamever.com