

# LINIO NEON 1615 TV HE

Outdoor · Vertical Bending · High Efficacy

# Beamever

## Features

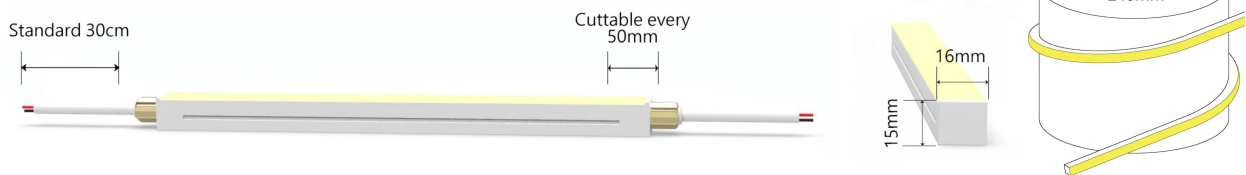
- Field cuttable & joinable
- Low voltage 24V DC
- High light efficacy
- UV stable without yellowing or cracking over time
- IP67 rated, ideal for indoor and outdoor uses
- 5 years warranty



Fixture type	
Project name	
Project phase	
Date	



## Dimension & Bending



## Physical

Dimensions	16mm x 15mm (width x height)
Bend Direction	Vertical bending
Bend Diameter	240mm
Cutting Interval	50mm
Field Cuttable	Yes
Housing Material	Dow Corning
Housing Technique	Co-extrusion
Body Color	White
Finish	Matte
Feed Entry	Front, side, bottom
Feed Length	Standard length 30cm
End Cap	Injected (Factory made only)
Mounting	Clips or channel (rigid or bendable)
Storage Temperature	-40~60°C (-40~140°F)
Ambient Temperature	-40~60°C (-40~140°F)10W
Max. Production Length	30m

## Performance & Electrical

Voltage	24VDC (23.5Vmin, 24.5Vmax)
Beam Angle	120°
MacAdam	2 steps
Efficacy (lm/W)	82lm/W @4000k 10W
CRI	90
Lumen Maintenance	> 54,000 hours
IP Rating	IP67
Resistance	UV, solvent, saltwater, flame
Dimming	PWM, 0-10V, DMX
Control Protocol	N/A
Warranty	5 years

## Certification & Safety

Certifications	UL,CE, REACH, RoHS, CB
Environment	Dry, damp or wet locations

Lumen/m	5W	10W	15W
■ 2700K	375	730	1050
■ 3000K	390	770	1110
■ 3500K	430	850	1230
■ 4000K	420	820	1170
■ 5000K	455	900	1290
■ 6000K	450	890	1260
Max. Run Length(m)	20	12	8

# LINIO NEON 1615 TV HE

Outdoor · Vertical Bending · High Efficacy



## Order Code

Series	Temp./Color	Power	Feed Entry	Connector Wire	End Cap	Length
LN1615TVHE	27=2700K 30=3000K 35=3500K 40=4000K 50=5000K 60=6000K	005=5W 010=10W 015=15W	FF=Front + Front BB=Bottom + Bottom LSLS=Left Side + Left Side FC=Front + Closed FB=Front + Bottom BLS=Bottom + Left Side FRS=Front + Right Side	OW=Open wire 30cm MFC=Male & female connector 30cm	IJ=Injected end cap (IP67) SEC=Silicone end cap (IP67) MEC=Mechanical end cap (IP67)	Min. - 50mm Max. - 30000mm Cut Inc. - 50mm

Example: LN1615TVHE-27-005-FF-OW-IJ-01000

\* Customizable—Contact Beamever representatives

## Channels or clips

Code	Description
LN1615-SC	1m straight aluminium channel
LN1615-BC-B	1m bendable stainless steel channel
LN1615-CL	Stainless steel clip (recommend 3 clips per meter)
LN1615-RSC	1m recessed mounted straight aluminum channel

\* For customization, please specify your demands to your Beamever representatives.

## Accessories (Optional)

Code	Description
LN1615-MEC3-F-2P	Screw-free mechanical end cap (G3), front entry with 30cm black cable, 2 pin
LN1615-SEC-C	Silicone closed end cap
MFC-2P-67	Male and female connectors with 30cm cable, IP67, 2 pin
ETC-2P-67-1M	Extension Male and female connectors with 1m cable, IP67, 2 pin

\* Please refer to "Accessories options" for more models available.

## Power supplies

Code	Description
XLG-150-24-A	PSU 24V/150W IP67, Non dimmable, White
ELG-150-24B-3Y	PSU 24V/150W IP67, 3 in 1 dimming function
ELG-150-24DA-3Y	PSU 24V/150W IP67, DALI control technology

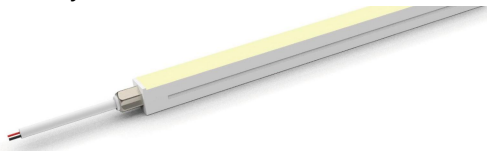
\* Please refer to "Power supplies options" for more models available.

## Note

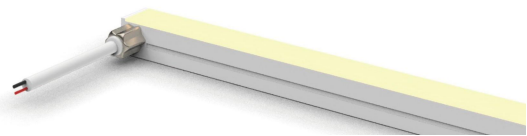
\* Leave your comments or other customized demands (if any) and contact Beamever.

## Feed Entry Options

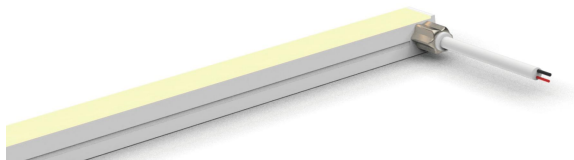
Front feed entry (F)



Left side feed entry (LS)



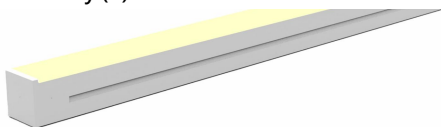
Right side feed entry (RS)



Bottom feed entry (B)



Closed feed entry (C)

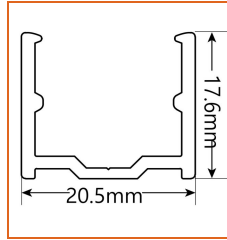
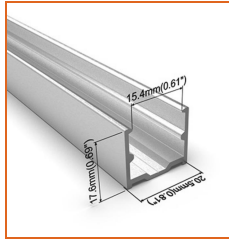
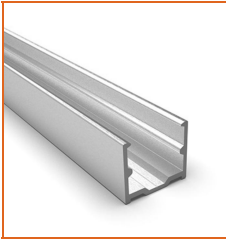


# LINIO NEON 1615 TV HE

Outdoor · Vertical Bending · High Efficacy



## Mounting Options



\* Standard length is 1m/pcs.

Name Straight Aluminum channel

Code LN1615-SC

Material Aluminum

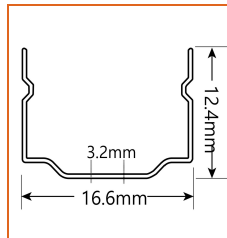
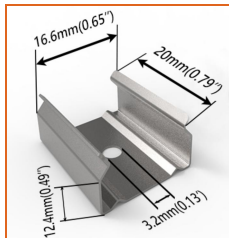
Mounting style Surface mounted

Length 1m

Width 20.5mm

Height 17.6mm

Internal width 15.4mm



\* Recommend use 3 mounting clips for 1m of neon.

Name Mounting clip

Code LN1615-CL

Material Stainless Steel

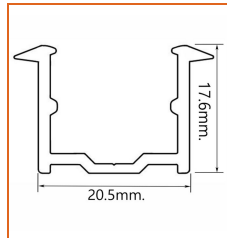
Mounting style Surface mounted

Length 20mm

Width 16.6mm

Height 12.4mm

Internal Width /



\* Standard length is 1m/pcs.

Name Recessed straight channel

Code LN1615-RSC

Material Aluminum

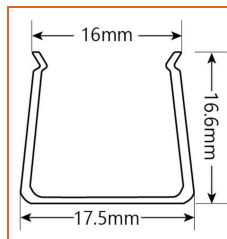
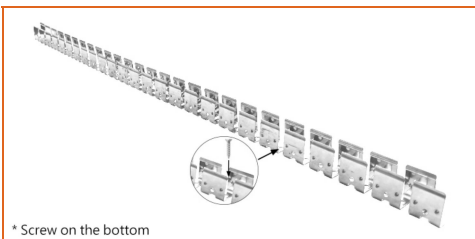
Mounting style Recessed mounted

Length 1m

Width 20.5mm

Height 17.6mm

Internal width 15.4mm



\* Screw on the bottom

\* Standard length is 1m/pcs.

Name Bendable channel (Bottom screw)

Code LN1615-BC-B

Material Stainless Steel

Mounting style Surface mounted

Length 1m

Width 17.5mm

Height 16.6mm

Internal Width 16mm

**Power Supplies Options**

\* Please refer to the spec sheet of each power supply for more detailed information

Code	Max Load	Input	Output	Dimming	Environment	Size
XLG-150-24-A	150W	100-305VAC	24VDC	Non-Dim	Dry/Damp/IP67	180x63x35.5mm (L x W x H)
ELG-150-24B-3Y	150W	100-305VAC	24VDC	3 in 1 dimming	Dry/Damp/IP67	219x63x35.5mm (LxWxH)
ELG-150-24DA-3Y	150W	100-305VAC	24VDC	DALI control technology	Dry/Damp/IP67	219x63x35.5mm (L x W x H)
LPV-150-24	150W	180-305VAC	24VDC	Non-Dim	Dry/Damp/IP67	148x40x30mm (L x W x H)
LRS-150-24	150W	85-132V / 170-264VAC	24VDC	Non-Dim	Dry	99x97x30mm (L x W x H)
PWM-120-24	120W	90 ~ 305V / 127 ~ 431VAC	24VDC	3 in 1 dimming	Dry/Damp/IP67	191x63x37.5mm (LxWxH)

**Accessories Options**



Name Silicone closed end cap  
Code LN1615-SEC-C

Closed silicone end cap



Name Silicone front end cap  
Code LN1615-SEC-F-2P

Silicone end cap front entry with 30cm black cable, 2 pin



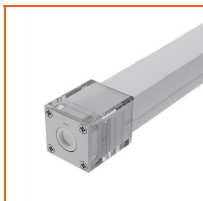
Name Silicone side end cap  
Code LN1615-SEC-S-2P

Silicone end cap side entry with 30cm black cable, 2 pin



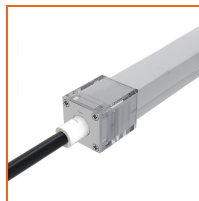
Name Silicone bottom end cap  
Code LN1615-SEC-B-2P

Silicone end cap bottom entry with 30cm black cable, 2 pin



Name Mechanical end cap (G1)  
Code LN1615-MEC1-C

Mechanical closed end cap with screws (G1)



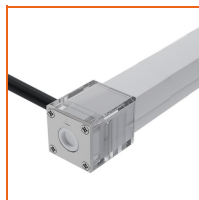
Name Mechanical end cap (G1)  
Code LN1615-MEC1-F-2P

Mechanical end cap with screws (G1), front entry with 30cm black cable, 2 pin



Name Mechanical end cap (G1)  
Code LN1615-MEC1-LS-2P

Mechanical end cap with screws (G1), left side entry with 30cm black cable, 2 pin



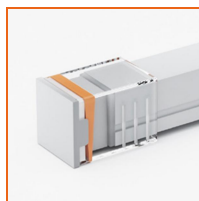
Name Mechanical end cap (G1)  
Code LN1615-MEC1-RS-2P

Mechanical end cap with screws (G1), right side entry with 30cm black cable, 2 pin



Name Mechanical end cap (G1)  
Code LN1615-MEC1-B-2P

Mechanical end cap with screws (G1), bottom entry with 30cm black cable, 2 pin



Name Mechanical end cap (G3)  
Code LN1615-MEC3-C

Screw-free mechanical closed end cap (G3)



Name Mechanical end cap (G3)  
Code LN1615-MEC3-F-2P

Screw-free mechanical end cap (G3), front entry with 30cm black cable, 2 pin

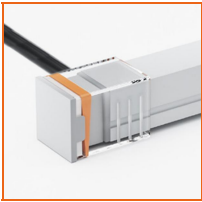


Name Mechanical end cap (G3)  
Code LN1615-MEC3-LS-2P

Screw-free mechanical end cap (G3), left side entry with 30cm black cable, 2 pin

# LINIO NEON 1615 TV HE

Outdoor · Vertical Bending · High Efficacy



Name Mechanical end cap (G3)  
 Code LN1615-MEC3-RS-2P  
 Screw-free mechanical end cap (G3), right side entry with 30cm black cable, 2 pin



Name Mechanical end cap (G3)  
 Code LN1615-MEC3-B-2P  
 Screw-free mechanical end cap (G3), bottom entry with 30cm black cable, 2 pin



Name Male and female connectors  
 Code MFC-2P-67  
 Male and female connectors with 30cm white cable, 2 pin



Name Extension connectors  
 Code ETC-2P-67-1M  
 Extension Male and female connectors with 1m white cable, 2 pin



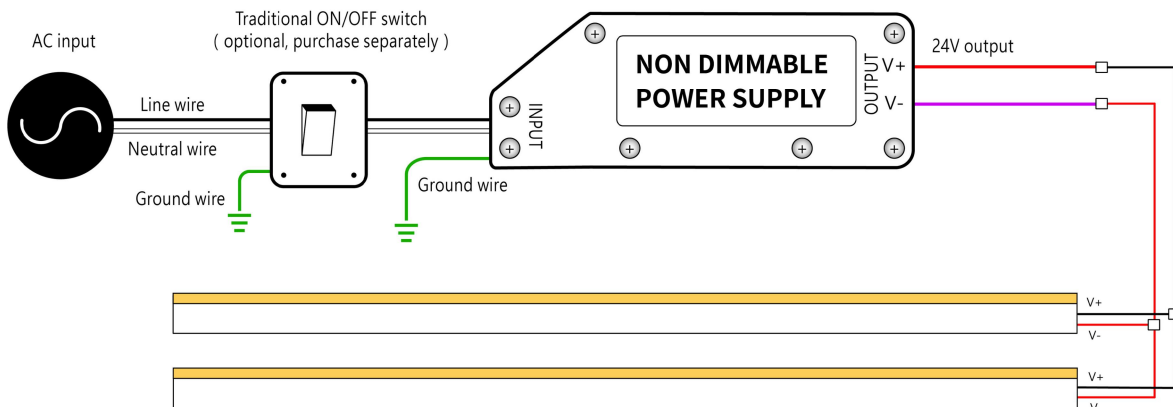
Name Extension connectors  
 Code ETC-2P-67-5M  
 Extension Male and female connectors with 5m white cable, 2 pin



Name Silicone glue  
 Code SG  
 Silicone glue

## Wiring Diagram

### Non Dimmable



### Dimmable

