

# LINIO NEON 1212 TV TW

Outdoor · Vertical Bending · Field Cuttable

**Beamever**

## Features

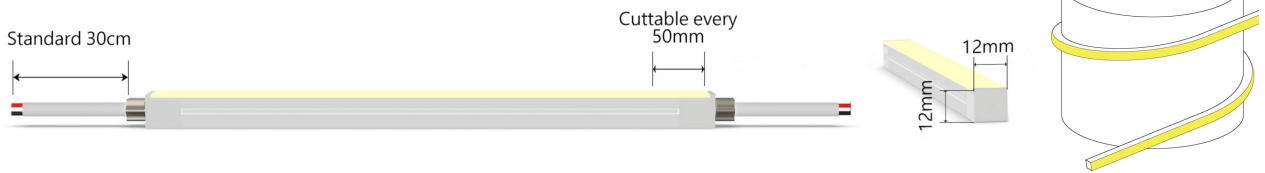
- Field cuttable & joinable
- Low voltage 24V DC
- Tunable white, CCT changing from 2700K to 5500K
- IP67 rated, ideal for indoor and outdoor uses
- UV stable without yellowing or cracking over time
- 5 years warranty



Fixture type	
Project name	
Project phase	
Date	



## Dimension & Bending



## Physical

Dimensions	12mm x 12mm (width x height)
Bend Direction	Vertical bending
Bend Diameter	240mm
Cutting Interval	50mm
Field Cuttable	Yes
Housing Material	Dow Corning
Housing Technique	Co-extrusion
Body Color	White
Finish	Matte
Feed Entry	Front, side, bottom
Feed Length	Standard length 30cm
End Cap	Injected (Factory made only)
Mounting	Clips or channel (rigid)
Storage Temperature	-40~60°C (-40~140°F)
Ambient Temperature	-40~60°C (-40~140°F)@10W
Max. Production Length	30m

## Performance & Electrical

Voltage	24VDC (23.5Vmin, 24.5Vmax)
Beam Angle	120°
MacAdam	2 steps
Efficacy (lm/W)	64.3lm@10W/M
CRI	93
Lumen Maintenance	> 54,000 hours
IP Rating	IP67
Resistance	UV, solvent, saltwater, flame
Dimming	PWM, 0-10V, DMX
Control Protocol	N/A
Warranty	5 years

## Certification & Safety

Certifications	CE, CB,ROHS, REACH, UL
Environment	Dry, damp or wet locations

Lumen/m	10W
■ 2700K	321
■ 5300K	339
■ 2700K+5300K	643
Max. Run Length(m)	5

# LINIO NEON 1212 TV TW

Outdoor · Vertical Bending · Field Cuttable



## Order Code

Series	Temp./Color	Power	Feed Entry	Connector Wire	End Cap	Length (mm)
LN1212TV	2753=2700K+53 00K	010=10W	FF=Front + Front BB=Bottom + Bottom LSLS=Left Side + Left Side FC=Front + Closed FB=Front + Bottom BLS=Bottom + Left Side FRS=Front + Right Side	OW=Open wire 30cm MFC=Male & female connector 30cm	IJ=Injected end cap (IP67) SEC=Silicone end cap (IP67) MEC=Mechanical end cap (IP67)	Min. - 50mm Max. - 30000mm Cut Inc. - 50mm

Example: LN1212TV-2755-010-FF-OW-IJ-05000

\* Customizable—Contact Beamever representatives

## Channels or clips

Code	Description
LN1212-SC	1m straight aluminium channel
LN1212-CL	Stainless steel clip (recommend 3 clips per meter)

\* For customization, please specify your demands to your Beamever representatives.

## Accessories (Optional)

Code	Description
LN1212-MEC3-F-3P	Screw-free mechanical end cap (G3), front entry with 30cm black cable, 3 pin
LN1212-SEC-C	Silicone closed end cap
MFC-3P-67	Male and female connectors with 30cm cable, IP67, 3 pin
ETC-3P-67-1M	Extension Male & Female connectors with 1m cable, IP67, 3 pin

\* Please refer to "Accessories options" for more models available.

## Power supplies or controllers

Code	Description
XLG-150-24-A	PSU 24V/150W IP67, Non dimmable, White
ELG-150-24B-3Y	PSU 24V/150W IP67, 3 in 1 dimming function
ELG-150-24DA-3Y	PSU 24V/150W IP67, DALI control technology

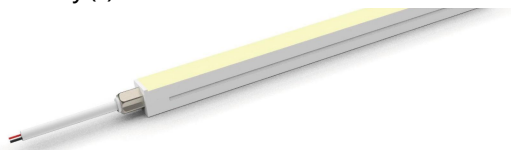
\* Please refer to "Power supplies options" and "DMX decoders and controllers options" for more models available.

## Note

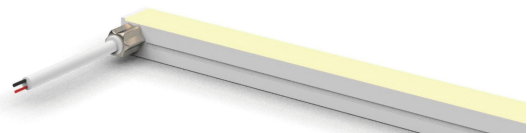
\* Leave your comments or other customized demands (if any) and contact Beamever.

## Feed Entry Options

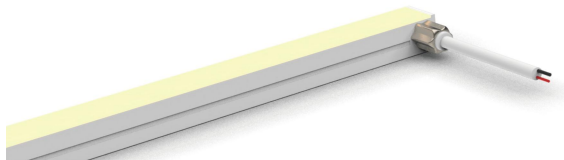
Front feed entry (F)



Left side feed entry (LS)



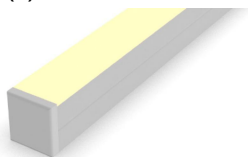
Right side feed entry (RS)



Bottom feed entry (B)



Closed feed entry (C)

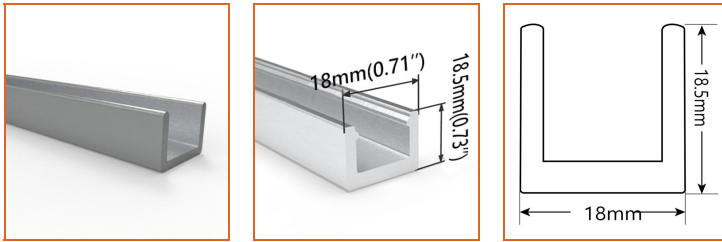


# LINIO NEON 1212 TV TW

Outdoor · Vertical Bending · Field Cuttable

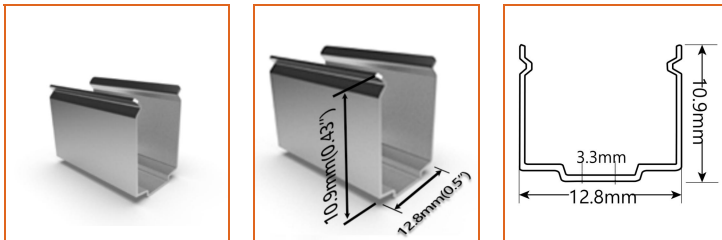


## Mounting Options



\* Standard length is 1m/pcs.

Name	Straight Aluminum channel
Code	LN1212-SC
Material	Aluminum
Mounting style	Surface mounted
Length	1m
Width	18mm
Height	18.5mm
Internal width	/



\* Recommend use 3 mounting clip for 1m of neon.

Name	Mounting clip
Code	LN1212-CL
Material	Stainless Steel
Mounting style	Surface mounted
Length	7.6mm
Width	12.8mm
Height	10.9mm
Internal Width	/

## Power Supplies Options

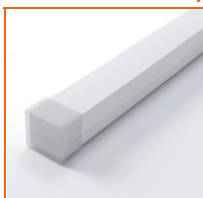
Code	Max Load	Input	Output	Dimming	Class 2	Environment	Size
LPV-150-24	150W	180-305V	24VDC	Non-Dim	Yes	Dry/IP67	191*63*37.5mm (L x W x H)
LRS-150-24	150W	85-132V / 170-264V	24VDC	Non-Dim	Yes	Dry	129*97*30mm (LxWxH)
XLG-150-24-A	150W	100-305V	24VDC	Non-Dim	Yes	Dry/IP67	180 *63*35.5mm (L x W x H)
PWM-120-24	120W	90 ~ 305V / 127 ~ 431V	24VDC	3 in 1 dimming	Yes	Dry/IP67	191*63*37.5mm (L x W x H)
ELG-150-24B-3Y	150W	100-305V	24VDC	3 in 1 dimming	Yes	Dry	219*63*35.5mm (L x W x H)
ELG-150-24DA-3Y	150W	100-305V	24VDC	DALI control	Yes	IP67	219*63*35.5mm (LxWxH)

\* Please refer to the spec sheet of each power supply for more detailed information

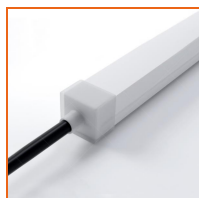
## DMX Decoders & Controllers Options

Type	Code	Description	Environment	Size
DMX Decoders	LT-903	3 channels output, Max. 8A current per channel, up to 576W output power	Indoor	122x110x3mm (L x W x H)
Controllers	M2+M3-3A	3 channels output, Max. 3A current per channel, up to 216W output power	Indoor	135x30x20mm (L x W x H)
Controllers	GA2	512 DMX channels, 4 touch sensitive buttons (on/off, mode, previous, next)	Indoor	87x110x10mm (L x W x H)
Controllers	CW4	1024 DMX channels, 6 SECne buttons and a color wheel, ideal for hotels, homes and public environments	Indoor	145x107x10mm (L x W x H)

## Accessories Options



Name Silicone closed end cap  
Code LN1212TV-SEC-C  
Closed silicone end cap



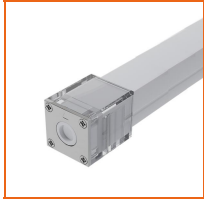
Name Silicone front end cap  
Code LN1212TV-SEC-F-3P  
Silicone end cap front entry with 30cm 3 pin cable



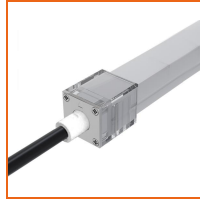
Name Silicone side end cap  
Code LN1212TV-SEC-S-3P  
Silicone end cap side entry with 30cm 3 pin cable



Name Silicone bottom end cap  
Code LN1212TV-SEC-B-3P  
Silicone end cap bottom entry with 30cm 3 pin cable



Name Mechanical end cap (G1)  
Code LN1212-MEC1-C  
Mechanical closed end cap with screws (G1)



Name Mechanical end cap (G1)  
Code LN1212-MEC1-F-3P  
Mechanical end cap with screws (G1), front entry with 30cm black cable, 3 pin



Name Mechanical end cap (G1)  
Code LN1212-MEC1-LS-3P  
Mechanical end cap with screws (G1), left side entry with 30cm black cable, 3 pin



Name Mechanical end cap (G1)  
Code LN1212-MEC1-RS-3P  
Mechanical end cap with screws (G1), right side entry with 30cm black cable, 3 pin



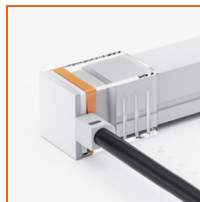
Name Mechanical end cap (G1)  
Code LN1212-MEC1-B-3P  
Mechanical end cap with screws (G1), bottom entry with 30cm black cable, 3 pin



Name Mechanical end cap (G3)  
Code LN1212-MEC3-C  
Screw-free mechanical closed end cap (G3)



Name Mechanical end cap (G3)  
Code LN1212-MEC3-F-3P  
Screw-free mechanical end cap (G3), front entry with 30cm black cable, 3 pin



Name Mechanical end cap (G3)  
Code LN1212-MEC3-LS-3P  
Screw-free mechanical end cap (G3), left side entry with 30cm black cable, 3 pin



Name Mechanical end cap (G3)  
Code LN1212-MEC3-RS-3P  
Screw-free mechanical end cap (G3), right side entry with 30cm black cable, 3 pin



Name Mechanical end cap (G3)  
Code LN1212-MEC3-B-3P  
Screw-free mechanical end cap (G3), bottom entry with 30cm black cable, 3 pin



Name Male and female connectors  
Code MFC-3P-67  
Male and female connectors with 30cm white cable, 3 pin



Name Extension connectors  
Code ETC-3P-67-1M  
Extension Male and female connectors with 1m white cable, 3 pin



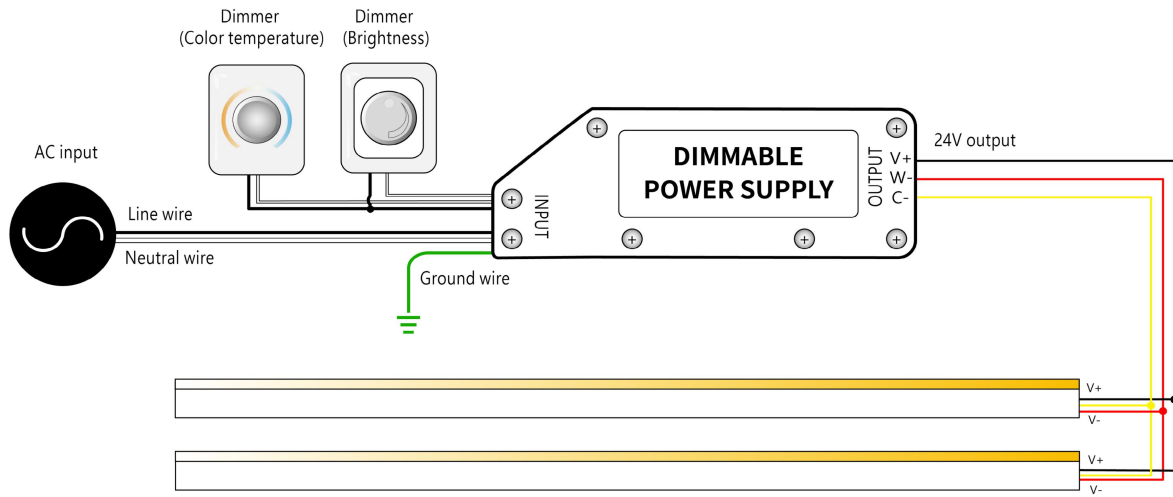
Name Extension connectors  
Code ETC-3P-67-5M  
Extension Male and female connectors with 5m white cable, 3 pin



Name Silicone glue  
Code SG  
Silicone glue

**Wiring Diagram**

Dimmable



\* Dimmers need to be purchased separately.