

LINIO NEON 0612 SV

Outdoor · Horizontal Bending · Field Cuttable

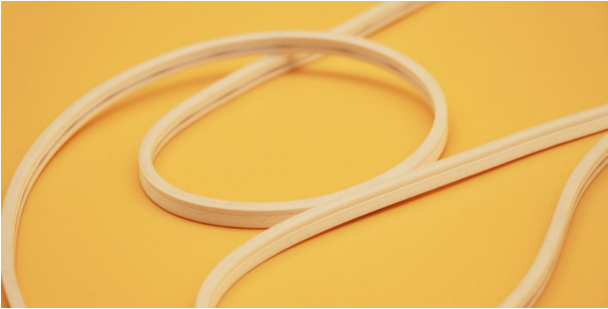
Beamever

Features

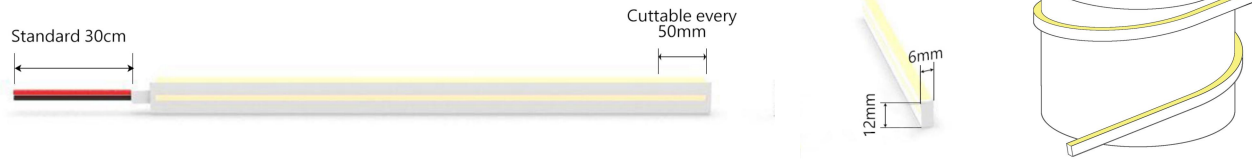
- Field cuttable & joinable
- Low voltage 24V DC
- All dimming protocols dimmable
- Max run length up to 13m from single power feed
- IP67 rated, ideal for indoor and outdoor uses
- UV stable without yellowing or cracking over time



Fixture type	
Project name	
Project phase	
Date	



Dimension & Bending



Physical

Dimensions	6mm x 12mm (width x height)
Bend Direction	Horizontal bending
Bend Diameter	120mm
Cutting Interval	50mm
Field Cuttable	Yes
Housing Material	Dow Corning
Housing Technique	Co-extrusion
Body Color	White
Finish	Glossy
Feed Entry	Front, side, bottom
Feed Length	Standard length 30cm
End Cap	Injected (Factory made only)
Mounting	Clips or channel
Storage Temperature	-40°C(-40°F) to 60°C (140°F)
Ambient Temperature	-40°C(-40°F) to 60°C (140°F)@10W
Max. Production Length	30m

Performance & Electrical

Voltage	24VDC (23.5Vmin, 24.5Vmax)
Beam Angle	120°
MacAdam	2 steps
Efficacy (lm/W)	41lm/W @4000K 10W
CRI	Ra94
Lumen Maintenance	> 54,000 hours
IP Rating	IP67
Resistance	UV, solvent, saltwater, flame
Dimming	PWM, 0-10V, DMX
Control Protocol	N/A
Warranty	5 years

Certification & Safety

Certifications	UL, CE, REACH, RoHS, CB
Environment	Dry, damp or wet locations

Lumen/m	10W
2700K	278
3000K	270
3500K	277
4000K	283
5500K	292
Max. Run Length(m)	13

LINIO NEON 0612 SV

Outdoor · Horizontal Bending · Field Cuttable

Beamever

Order Code

Series	Temp./Color	Power	Feed Entry	Connector Wire	End Cap	Length (mm)
LN0612SV	27=2700K 30=3000K 35=3500K 40=4000K 55=5500K	010=10W	FF=Front + Front BB=Bottom + Bottom LSLS=Left Side + Left Side FC=Front + Closed FB=Front + Bottom BLS=Bottom + Left Side FRS=Front + Right Side	OW=Open wire 30cm MFC=Male & female connector 30cm	IJ=Injected end cap (IP44) *Only available for front/closed entry SEC=Silicone end cap (IP67)	Min. - 50mm Max. - 30000mm Cut Inc. - 50mm

Example: LN0612SV-30-010-FF-OW-SEC-05000

* Customizable—Contact Beamever representatives

Channels or clips

Code	Description
LN0612-SC	1m straight aluminum channel
LN0612-CL	Stainless steel clip (recommend 3 clips per meter)

* For customization, please specify your demands to your Beamever representatives.

Accessories (Optional)

Code	Description
LN0612-SEC-C	Silicone closed end cap
MFC-2P-67	Male and female connectors with 30cm cable, IP67, 2 pin
ETC-2P-67-1M	Extension Male and female connectors with 1m cable, IP67, 2 pin

* Please refer to "Accessories options" for more models available.

Power supplies

Code	Description
XLG-150-24-A	PSU 24V/150W IP67, Non dimmable, White
ELG-150-24B-3Y	PSU 24V/150W IP67, 3 in 1 dimming function
ELG-150-24DA-3Y	PSU 24V/150W IP67, DALI control technology

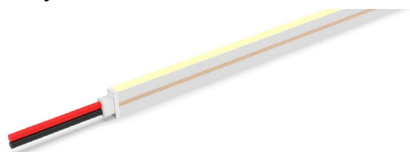
* Please refer to "Power supplies options" for more models available.

Note

* Leave your comments or other customized demands (if any) and contact Beamever.

Feed Entry Options

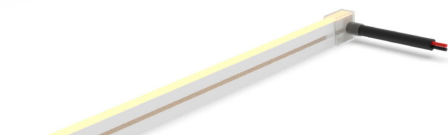
Front feed entry (F)



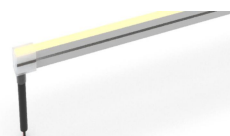
Left side feed entry (LS)



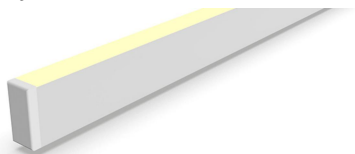
Right side feed entry (RS)



Bottom feed entry (B)



Closed feed entry (C)

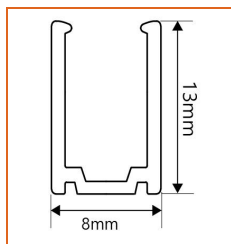
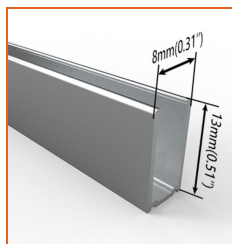
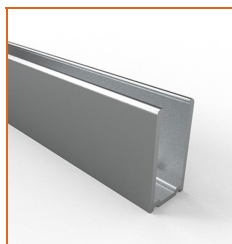


LINIO NEON 0612 SV

Outdoor · Horizontal Bending · Field Cuttable

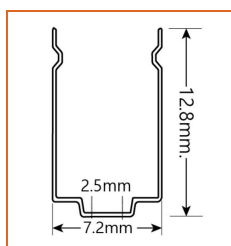
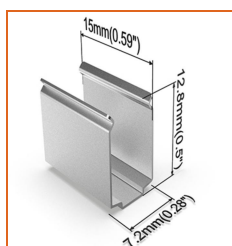
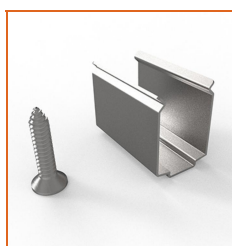
Beamever

Mounting Options



* Standard length is 1m/pcs.

Name	Straight aluminum channel
Code	LN0612-SC
Material	aluminum
Mounting style	Surface mounted
Length	1m
Width	8mm
Height	13mm
Internal width	/



* Recommend use 3 mounting clips for 1m of neon.

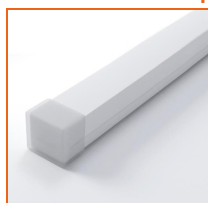
Name	Mounting clip
Code	LN0612-CL
Material	Stainless Steel
Mounting style	Surface mounted
Length	15mm
Width	7.2mm
Height	12.8mm
Internal Width	/

Power Supplies Options

Code	Max Load	Input	Output	Dimming	Class 2	Environment	Size
XLG-150-24-A	150W	100-305VAC	24VDC	Non-Dim		Dry/Damp/IP67	180x63x35.5mm (L x W x H)
ELG-150-24B-3Y	150W	100-305VAC	24VDC	3 in 1 dimming		Dry/Damp/IP67	219x63x35.5mm (LxWxH)
ELG-150-24DA-3Y	150W	100-305VAC	24VDC	DALI control technology		Dry/Damp/IP67	219x63x35.5mm (L x W x H)
LPV-150-24	150W	180-305VAC	24VDC	Non-Dim		Dry/Damp/IP67	148x40x30mm (L x W x H)
LRS-150-24	150W	85-132V / 170-264VAC	24VDC	Non-Dim		Dry	99x97x30mm (L x W x H)
PWM-120-24	120W	90 ~ 305V / 127 ~ 431VAC	24VDC	3 in 1 dimming		Dry/Damp/IP67	191x63x37.5mm (LxWxH)

* Please refer to the spec sheet of each power supply for more detailed information

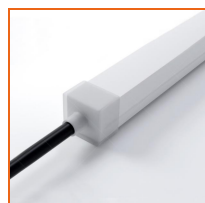
Accessories Options



Name Silicone closed end cap

Code LN0612-SEC-C

Closed silicone end cap for LINIO NEON 0612 SV



Name Silicone front end cap

Code LN0612-SEC-F-2P

Silicone end cap front entry with 30cm black cable, 2 pin



Name Silicone side end cap

Code LN0612-SEC-S-2P

Silicone end cap side entry with 30cm black cable, 2 pin



Name Silicone bottom end cap

Code LN0612-SEC-B-2P

Silicone end cap bottom entry with 30cm black cable, 2 pin

LINIO NEON 0612 SV

Outdoor · Horizontal Bending · Field Cuttable

Beamever



Name Male and female connectors

Code MFC-2P-67

Male and female connectors with 30cm white cable, 2 pin



Name Extension connectors

Code ETC-2P-67-1M

Extension Male and female connectors with 1m white cable, 2 pin



Name Extension connectors

Code ETC-2P-67-5M

Extension Male and female connectors with 5m white cable, 2 pin



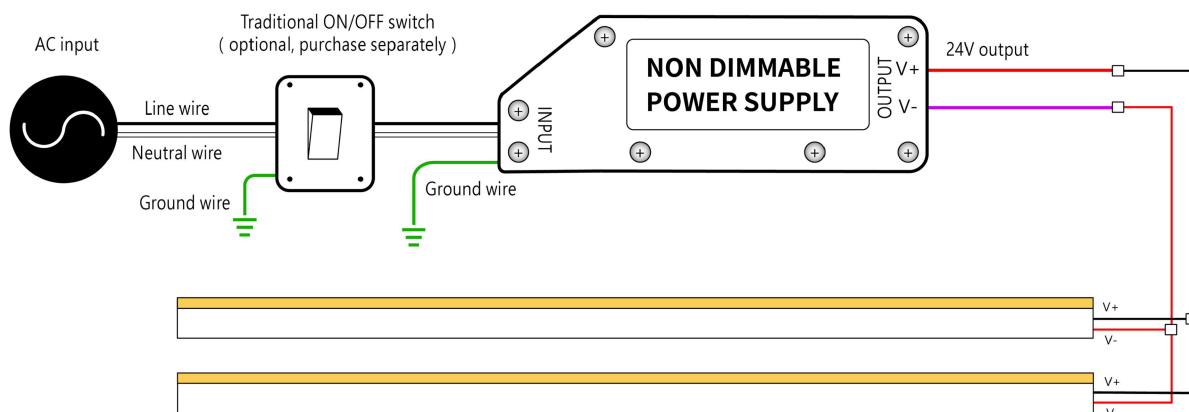
Name Silicone glue

Code SG

Silicone glue

Wiring Diagram

Non Dimmable



Dimmable

