

LINIO NEON 0408 SV

Outdoor · Ultra Slim · Field Cuttable

Beamever

Features

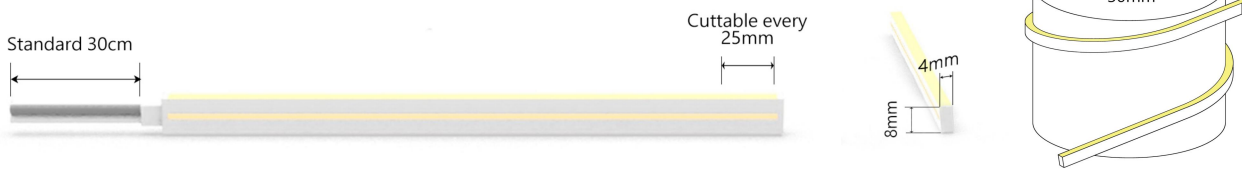
- Field cuttable & joinable
- Low voltage 24V DC
- All dimming protocols dimmable
- IP65 rated, ideal for indoor and outdoor uses
- UV stable without yellowing or cracking over time
- 5 years warranty



Fixture type	
Project name	
Project phase	
Date	



Dimension & Bending



Physical

Dimensions	4mm x 8mm (width x height)
Bend Direction	Horizontal bending
Bend Diameter	30mm
Cutting Interval	25mm
Field Cuttable	Yes
Housing Material	Dow Corning
Housing Technique	Co-extrusion
Body Color	White
Finish	Glossy
Feed Entry	Front, side, bottom
Feed Length	Standard length 30cm
End Cap	Injected (Factory made only)
Mounting	Clips or channel
Storage Temperature	-40°C(-40°F) to 60°C (140°F)
Ambient Temperature	-40°C(-40°F) to 65°C (149°F)@6W
Max. Production Length	30m

Performance & Electrical

Voltage	24VDC (23.5Vmin, 24.5Vmax)
Beam Angle	120°
MacAdam	3 steps
Efficacy (lm/W)	42lm/W @4000K 6W
CRI	Ra95
Lumen Maintenance	> 30,000 hours
IP Rating	IP65
Resistance	UV, solvent, saltwater, flame
Dimming	PWM, 0-10V, DMX
Control Protocol	N/A
Warranty	3 years

Certification & Safety

Certifications	UL, CE, REACH, RoHS, CB
Environment	Dry, damp locations

Lumen/m	6W
■ 2700K	160
■ 3000K	165
■ 3500K	178
■ 4000K	197
■ 5500K	182
Max. Run Length(m)	5

LINIO NEON 0408 SV

Outdoor · Ultra Slim · Field Cuttable



Order Code

Series	Temp./Color	Power	Feed Entry	Connector Wire	End Cap	Length(mm)
LN0408SV	27=2700K 30=3000K 35=3500K 40=4000K 55=5500K	006=6W	FF=Front + Front FC=Front + Closed	OW=Open wire 30cm MFC=Male & female connector 30cm	IJ=Injected end cap (IP44) *Only available for front/closed entry SEC=Silicone end cap (IP65)	Min. 25mm Max. 30000mm Cut Inc. 25mm

Example: LN0408SV-30-006-FF-OW-IJ-05000

* Customizable—Contact Beamever representatives

Channels or clips

Code	Description
LN0408-SC	1m straight aluminum channel
LN0408-CL	aluminum clip (recommend 3 clips per meter)

* For customization, please specify your demands to your Beamever representatives.

Accessories (Optional)

Code	Description
LN0408-SEC-C	Silicone closed end cap
MFC-2P-67	Male and female connectors with 30cm cable, IP20, 2 pin
ETC-2P-67-1M	Extension Male and female connectors with 1m cable, IP20, 2 pin

* Please refer to "Accessories options" for more models available.

Power supplies

Code	Description
XLG-150-24-A	PSU 24V/150W IP67, Non dimmable, White
ELG-150-24B-3Y	PSU 24V/150W IP67, 3 in 1 dimming function
ELG-150-24DA-3Y	PSU 24V/150W IP67, DALI control technology

* Please refer to "Power supplies options" for more models available.

Note

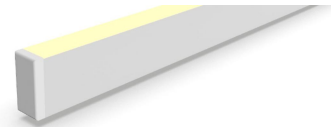
* Leave your comments or other customized demands (if any) and contact Beamever.

Feed Entry Options

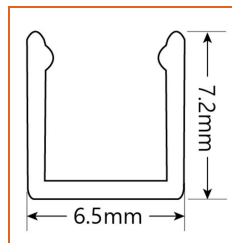
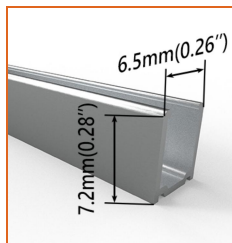
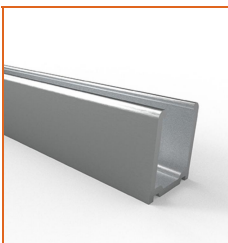
Front feed entry (F)



Closed feed entry (C)

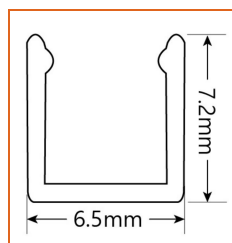
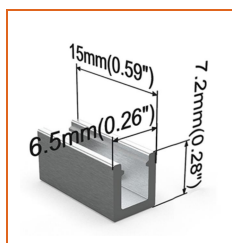
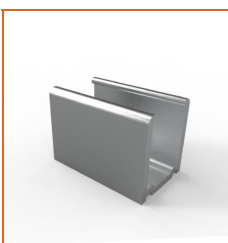


Mounting Options



* Standard length is 1m/pc.

Name	Straight aluminum channel
Code	LN0408-SC
Material	Aluminum
Mounting style	Surface mounted
Length	1m
Width	6.5mm
Height	7.2mm
Internal width	/



* Recommend use 3 mounting clips for 1m of neon.

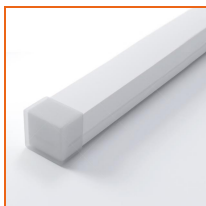
Name	Mounting clip
Code	LN0408-CL
Material	Aluminum
Mounting style	Surface mounted
Length	15mm
Width	6.5mm
Height	7.2mm

Power Supplies Options

Code	Max Load	Input	Output	Dimming	Environment	Size
XLG-150-24-A	150W	100-305VAC	24VDC	Non-Dim	Dry/Damp/IP67	180x63x35.5mm (L x W x H)
ELG-150-24B-3Y	150W	100-305VAC	24VDC	3 in 1 dimming	Dry/Damp/IP67	219x63x35.5mm (LxWxH)
ELG-150-24DA-3Y	150W	100-305VAC	24VDC	DALI control technology	Dry/Damp/IP67	219x63x35.5mm (L x W x H)
LPV-150-24	150W	180-305VAC	24VDC	Non-Dim	Dry/Damp/IP67	148x40x30mm (L x W x H)
LRS-150-24	150W	85-132V / 170-264VAC	24VDC	Non-Dim	Dry	99x97x30mm (L x W x H)
PWM-120-24	120W	90 ~ 305V / 127 ~ 431VAC	24VDC	3 in 1 dimming	Dry/Damp/IP67	191x63x37.5mm (LxWxH)

* Please refer to the spec sheet of each power supply for more detailed information

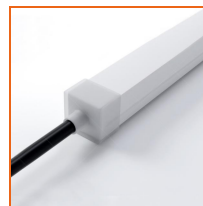
Accessories Options



Name Silicone closed end cap

Code LN0408-SEC-C

Closed silicone end cap



Name Silicone front end cap

Code LN0408-SEC-F-2P

Silicone end cap front entry with 30cm black cable, 2 pin



Name Male and female connectors

Code MFC-2P-67

Male and female connectors with 30cm white cable, 2 pin



Name Extension connectors

Code ETC-2P-67-1M

Extension Male and female connectors with 1m white cable, 2 pin



Name Extension connectors

Code ETC-2P-67-5M

Extension Male and female connectors with 5m white cable, 2 pin



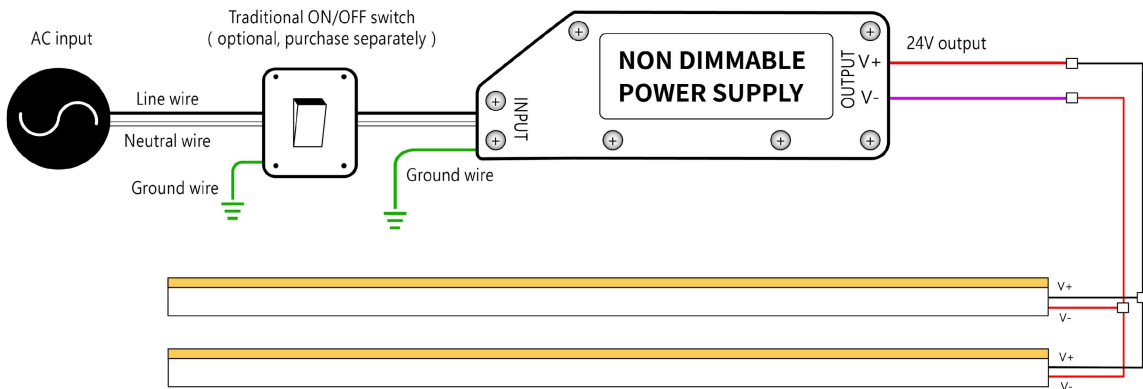
Name Silicone glue

Code SG

Silicone glue

Wiring Diagram

Non Dimmable



Dimmable

