

# LINIO NEON 0612 SV TW

Outdoor · Horizontal Bending · Field Cuttable

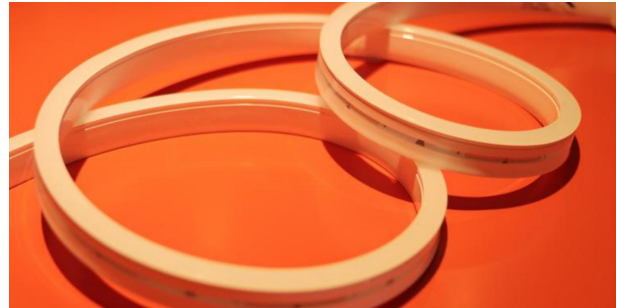
# Beamever

## Features

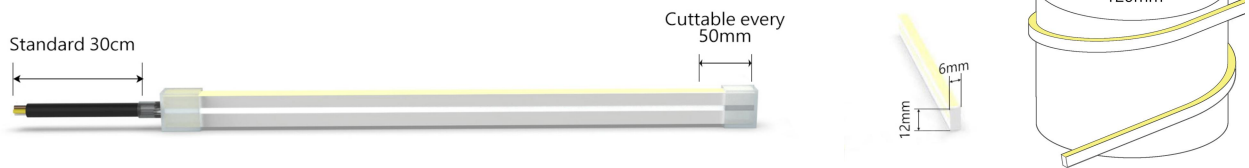
- Field cuttable & joinable
- Low voltage 24V DC
- Tunable white, CCT changing from 2700K to 5300K
- IP67 rated, ideal for indoor and outdoor uses
- UV stable without yellowing or cracking over time
- 5 years warranty



Fixture type	
Project name	
Project phase	
Date	



## Dimension & Bending



## Physical

Dimensions	6mm x 12mm (width x height)
Bend Direction	Horizontal bending
Bend Diameter	120mm
Cutting Interval	50mm
Field Cuttable	Yes
Housing Material	Dow Corning
Housing Technique	Co-extrusion
Body Color	White
Finish	Glossy
Feed Entry	Front, side, bottom
Feed Length	Standard length 30cm
End Cap	Silicone
Mounting	Clips or channel (rigid)
Storage Temperature	-40~60°C (-40~140°F)
Ambient Temperature	-40~60°C (-40~140°F)@10W
Max. Production Length	30m

## Performance & Electrical

Voltage	24VDC (23.5Vmin, 24.5Vmax)
Beam Angle	120°
MacAdam	3 steps
Efficacy (lm/W)	51.2lm/W @10W
CRI	Ra80
Lumen Maintenance	> 54,000 hours
IP Rating	IP67/IP44
Resistance	UV, solvent, saltwater, flame
Dimming	PWM, 0-10V, DMX
Control Protocol	N/A
Warranty	5 years

## Certification & Safety

Certifications	UL, CE, REACH, RoHS, CB
Environment	Dry, damp or wet locations

Lumen/m	10W
■ 2700K	132
■ 5300K	148
■ 2700K+5300K	276
Max. Run Length(m)	5

**Order Code**

Series	Temp./Color	Power	Feed Entry	Connector Wire	End Cap	Length (mm)
LN0612SV	2753=2700K+53 00K	010=10W	FF=Front + Front BB=Bottom + Bottom LSSL=Left Side + Left Side FC=Front + Closed FB=Front + Bottom BLS=Bottom + Left Side FRS=Front + Right Side	OW=Open wire 30cm MFC=Male & female connector 30cm	SEC=Silicone end cap (IP67)	Min. - 50mm Max. - 30000mm Cut Inc. - 50mm

Example: LN0612SV-2753-010-FF-OW-IJ-05000

\* Customizable—Contact Beamever representatives

**Channels or clips**

Code	Description
LN0612-SC	1m straight aluminium channel
LN0612-CL	Stainless steel clip (recommend 3 clips per meter)

\* For customization, please specify your demands to your Beamever representatives.

**Accessories (Optional)**

Code	Description
LN0612-SEC-F-3P	Silicone front end cap with 30cm 3 pin cable
LN0612-SEC-C	Silicone closed end cap
MFC-3P-67	Male and female connectors with 30cm cable, IP67, 3 pin
ETC-3P-67-1M	Extension Male & Female connectors with 1m cable, IP67, 3 pin

\* Please refer to "Accessories options" for more models available.

**Power supplies or controllers**

Code	Description
XLG-150-24-A	PSU 24V/150W IP67, Non dimmable, White
ELG-150-24B-3Y	PSU 24V/150W IP67, 3 in 1 dimming function
ELG-150-24DA-3Y	PSU 24V/150W IP67, DALI control technology

\* Please refer to "Power supplies options" and "DMX decoders and controllers options" for more models available.

**Note**

\* Leave your comments or other customized demands (if any) and contact Beamever.

**Feed Entry Options**

Front feed entry (F)



Left side feed entry (LS)



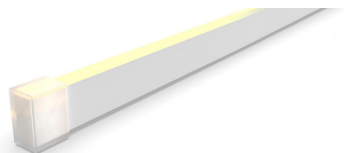
Right side feed entry (RS)



Bottom feed entry (B)



Closed feed entry (C)

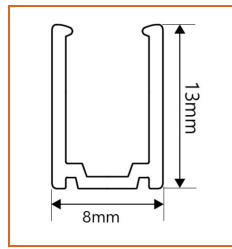
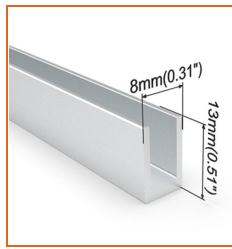
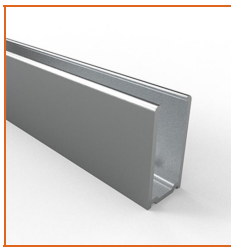


# LINIO NEON 0612 SV TW

Outdoor · Horizontal Bending · Field Cuttable

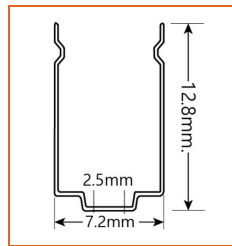
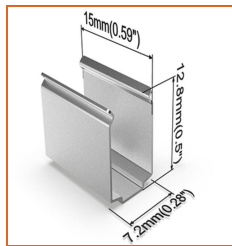
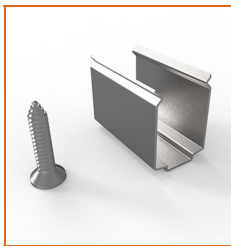


## Mounting Options



\* Standard length is 1m/pc.

Name	Straight Aluminum channel
Code	LN0612-SC
Material	Aluminum
Mounting style	Surface mounted
Length	1m
Width	8mm
Height	13mm
Internal width	6.5mm



\* Recommend use 3 mounting clip for 1m of neon.

Name	Mounting clip
Code	LN0612-CL
Material	Stainless Steel
Mounting style	Surface mounted
Length	15mm
Width	7.2mm
Height	12.8mm
Internal Width	/

## Power Supplies Options

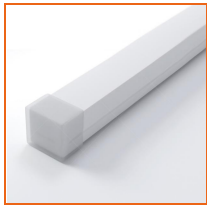
Code	Max Load	Input	Output	Dimming	Environment	Size
XLG-150-24-A	150W	100-305VAC	24VDC	Non-Dim	Dry/Damp/IP67	180x63x35.5mm (L x W x H)
ELG-150-24B-3Y	150W	100-305VAC	24VDC	3 in 1 dimming	Dry/Damp/IP67	219x63x35.5mm (LxWxH)
ELG-150-24DA-3Y	150W	100-305VAC	24VDC	DALI control technology	Dry/Damp/IP67	219x63x35.5mm (L x W x H)
LM-100-24-1287	100W	120-277VAC	24VDC	0-10V (1-10V/10V PWM/RX, Push DIM/CCT)	Dry	352x43x30mm (L x W x H)
LRS-150-24	150W	85-132V / 170-264VAC	24VDC	Non-Dim	Dry	99x97x30mm (L x W x H)
PWM-120-24	120W	90 ~ 305V / 127 ~ 431VAC	24VDC	3 in 1 dimming	Dry/Damp/IP67	191x63x37.5mm (LxWxH)

\* Please refer to the spec sheet of each power supply for more detailed information

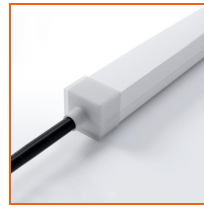
## DMX Decoders & Controllers Options

Type	Code	Description	Environment	Size
DMX Decoders	LT-903	3 channels output, Max. 8A current per channel, up to 576W output power	Indoor	122x110x3mm (L x W x H)
Controllers	M2+M3-3A	3 channels output, Max. 3A current per channel, up to 216W output power	Indoor	135x30x20mm (L x W x H)
Controllers	GA2	512 DMX channels, 4 touch sensitive buttons (on/off, mode, previous, next)	Indoor	87x110x10mm (L x W x H)
Controllers	CW4	1024 DMX channels, 6 SECne buttons and a color wheel, ideal for hotels, homes and public environments	Indoor	145x107x10mm (L x W x H)

**Accessories Options**



Name Silicone closed end cap  
Code LN0612-SEC-C  
Closed silicone end cap for LINIO NEON 0612 SV



Name Silicone front end cap  
Code LN0612-SEC-F-3P  
Silicone end cap front entry with 30cm 3 pin cable



Name Silicone side end cap  
Code LN0612-SEC-S-3P  
Silicone end cap side entry with 30cm 3 pin cable



Name Silicone bottom end cap  
Code LN0612-SEC-B-3P  
Silicone end cap bottom entry with 30cm 3 pin cable



Name Male & female connectors  
Code MFC-3P-67  
Male and female connectors with 30cm cable, IP67, 3 pin



Name Extension connectors  
Code ETC-3P-67-1M  
Extension Male & Female connectors with 1m cable, IP67, 3 pin



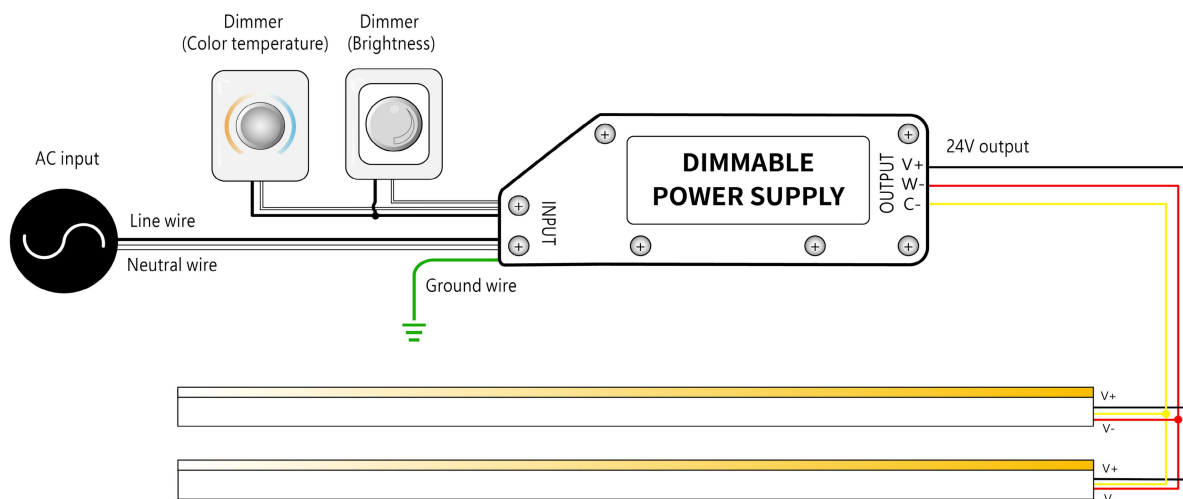
Name Extension connectors  
Code ETC-3P-67-5M  
Extension Male & Female connectors with 5m cable, IP67, 3 pin



Name Silicone glue  
Code SG  
Silicone glue

**Wiring Diagram**

**Dimmable**



\* Dimmers need to be purchased separately.