

# LINIO NEON GRAZE

Indoor/Outdoor · Dual Bending · Flexible

# Beamever

## Features

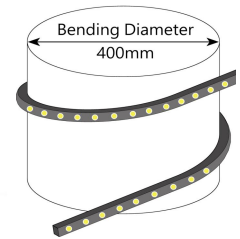
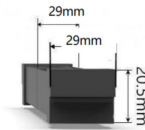
- Low Voltage 24V DC
- Dual bending flexibility different from rigid wallwasher
- Ideal flexibility for creating unique shapes and designs
- High-grade Dow Corning silicone
- IP65 rated, ideal for indoor and outdoor uses
- 5 years warranty



Fixture type	
Project name	
Project phase	
Date	



## Dimension & Bending



## Physical

Dimensions	29mm x 20.5mm (width x height)
Bend Direction	Dual bending
Bend Diameter	400mm
Cutting Interval	250mm
Field Cuttable	No
Housing Material	Dow Corning
Housing Technique	Co-extrusion
Body Color	Grey
Finish	N/A
Feed Entry	Bottom
Feed Length	Standard length 30cm
End Cap	Injected (Factory made only)
Mounting	Clips or channel (rigid)
Storage Temperature	-40~60°C (-40~140°F)
Ambient Temperature	-40~45°C (-40~113°F)@24W
Max. Production Length	5m

## Performance & Electrical

Voltage	24VDC (23.5Vmin, 24.5Vmax)
Beam Angle	15°, 30°, 50°, 18*20°, 20*35°, 20*55°
MacAdam	3 steps
Efficacy (lm/W)	113lm/W @24W
CRI	80
Lumen Maintenance	> 30,000 hours
IP Rating	IP65
Resistance	UV, solvent, saltwater, flame
Dimming	PWM, 0-10V, DMX
Control Protocol	N/A
Warranty	5 years

## Certification & Safety

Certifications	UL, CE, REACH, RoHS, CB
Environment	Dry, damp locations

Lumen/m	24W	15°	30°	50°	18*20°	20*35°	20*55°
■ 2700K		2263	2394	2525	1710	1704	1652
■ 3000K		2499	2517	2558	2261	2793	1735
■ 4000K		2631	2727	2450	2189	1772	2929
■ 6500K		2005	2025	1906	2437	2211	2879
Max. Run Length(m)		5	5	5	5	5	5

# LINIO NEON GRAZE

Indoor/Outdoor · Dual Bending · Flexible



## Order Code

Series	Temp./Color	Beam Angle	Power	Feed Entry	Connector Wire	End Cap	Length(mm)
LNG	27=2700K 30=3000K 40=4000K 65=6500K	15=15° 30=30° 50=50° 1820=18*20° 2035=20*35° 2055=20*55°	240=24W	BB=Bottom + Bottom BC=Bottom + Closed	OW=Open wire 30cm MFC=Male & female connector 30cm	IJ=Injected end cap (IP65) * End caps are added by default	Min. 250mm Max. 5000mm Cut Inc. 250mm

Example: LNG-27-15-240-BB-OW-IJ-05000

\* Customizable—Contact Beamever representatives

## Channels or clips

Code	Description
LNG-SC	1m straight aluminum channel
LNG-AC	Stainless steel adjustable angle clip (use with channel or clip)
LNG-CL	Aluminum clip (recommend 3 clips per meter)

\* For customization, please specify your demands to your Beamever representatives.

## Accessories (Optional, purchase for extra)

Code	Description
MFC-2P-67	Male and female connectors with 30cm cable, IP67, 2 pin
ETC-2P-67-1M	Extension Male and female connectors with 1m cable, IP67, 2 pin

\* Please refer to "Accessories options" for more models available.

## Power supplies

Code	Description
XLG-150-24-A	PSU 24V/150W IP67, Non dimmable, White
ELG-150-24B-3Y	PSU 24V/150W IP67, 3 in 1 dimming function
ELG-150-24DA-3Y	PSU 24V/150W IP67, DALI control technology

\* Please refer to "Power supplies options" for more models available.

## Note

\* Leave your comments or other customized demands (if any) and contact Beamever.

## Feed Entry Options

Closed feed entry (C)



Bottom feed entry (B)

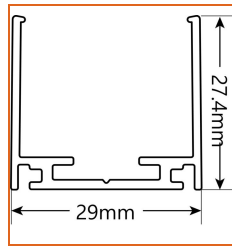
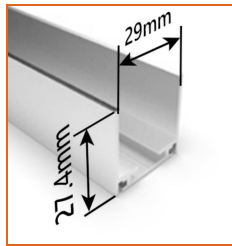
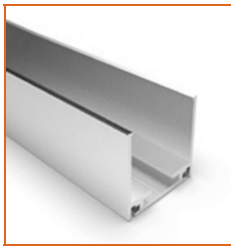


# LINIO NEON GRAZE

Indoor/Outdoor · Dual Bending · Flexible

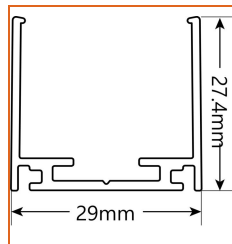
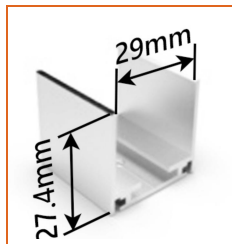


## Mounting Options



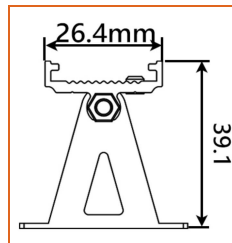
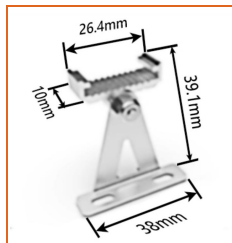
\* Standard length is 1m/pcs.

Name	Straight Aluminum channel
Code	LNG-SC
Material	Aluminum
Mounting style	Surface mounted
Length	1m
Width	29mm
Height	27.4mm
Internal width	/



\* Recommend use 3 mounting clips for 1m of neon.

Name	Mounting clip
Code	LNG-CL
Material	Aluminum
Mounting style	Surface mounted
Length	30mm
Width	29mm
Height	27.4mm
Internal Width	/



\* Use with channel or clip.

Name	Adjustable clip
Code	LNG-AC
Material	Stainless steel
Mounting style	Surface mounted
Length	10mm
Width	38mm
Height	39.1mm
Internal Width	/

## Power Supplies Options

Code	Max Load	Input	Output	Dimming	Environment	Size
XLG-150-24-A	150W	100-305VAC	24VDC	Non-Dim	Dry/Damp/IP67	180x63x35.5mm (L x W x H)
ELG-150-24B-3Y	150W	100-305VAC	24VDC	3 in 1 dimming	Dry/Damp/IP67	219x63x35.5mm (LxWxH)
ELG-150-24DA-3Y	150W	100-305VAC	24VDC	DALI control technology	Dry/Damp/IP67	219x63x35.5mm (L x W x H)
LPV-150-24	150W	180-305VAC	24VDC	Non-Dim	Dry/Damp/IP67	148x40x30mm (L x W x H)
LRS-150-24	150W	85-132V / 170-264VAC	24VDC	Non-Dim	Dry	99x97x30mm (L x W x H)
PWM-120-24	120W	90 ~ 305V / 127 ~ 431VAC	24VDC	3 in 1 dimming	Dry/Damp/IP67	191x63x37.5mm (LxWxH)

\* Please refer to the spec sheet of each power supply for more detailed information

# LINIO NEON GRAZE

Indoor/Outdoor · Dual Bending · Flexible



## Accessories Options (Optional, purchase for extra)



Name Male and female connectors

Code MFC-2P-67

Male and female connectors with 30cm cable, IP67, 2 pin



Name Extension connectors

Code ETC-2P-67-1M

Extension Male and female connectors with 1m cable, IP67, 2 pin



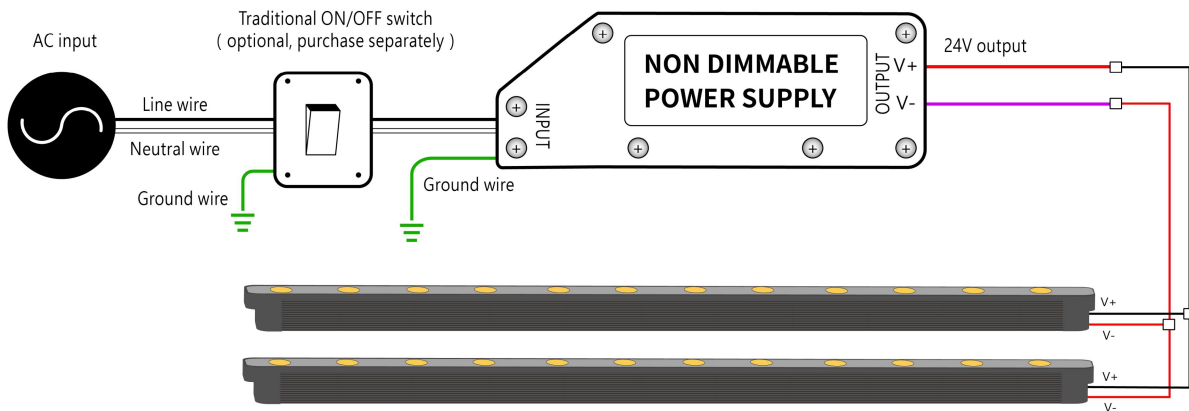
Name Extension connectors

Code ETC-2P-67-5M

Extension Male and female connectors with 5m cable, IP67, 2 pin

## Wiring Diagram

### Non Dimmable



### Dimmable

