

LINIO NEON 1010 TV

Outdoor · 3-side Emitting · Field Cuttable



Features

- Field cuttable & joinable
- Low voltage 24V DC
- All dimming protocols dimmable
- IP67 rated, ideal for indoor and outdoor uses
- UV stable without yellowing or cracking over time
- 5 years warranty



Fixture type	
Project name	
Project phase	
Date	

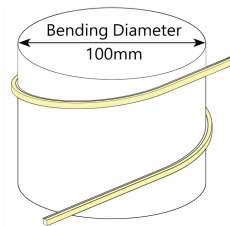
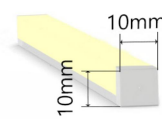


Dimension & Bending

Standard 30cm



Cuttable every 35.7mm



Physical

Dimensions	10mm x 10mm (width x height)
Bend Direction	Vertical bending
Bend Diameter	100mm
Cutting Interval	35.7mm
Field Cuttable	Yes
Housing Material	Dow Corning
Housing Technique	Co-extrusion
Body Color	White
Finish	Glossy
Feed Entry	Front, side, bottom
Feed Length	Standard length 30cm
End Cap	Injected (Factory made only)
Mounting	Clips or channel
Storage Temperature	-40°C(-40°F) to 60°C (140°F)
Ambient Temperature	-40°C(-40°F) to 60°C (140°F)@10W
Max. Production Length	30m

Performance & Electrical

Voltage	24VDC (23.5Vmin, 24.5Vmax)
Beam Angle	220°
MacAdam	2 steps
Efficacy (lm/W)	78lm/W @4000K 10W
CRI	Ra94
Lumen Maintenance	> 54,000 hours
IP Rating	IP67
Resistance	UV, solvent, saltwater, flame
Dimming	PWM, 0-10V, DMX
Control Protocol	N/A
Warranty	5 years

Certification & Safety

Certifications	UL, CE, REACH, RoHS, CB
Environment	Dry, damp or wet locations

Lumen/m	10W
■ 2700K	645
■ 3000K	662
■ 3500K	705
■ 4000K	694
■ 6000K	661
Max. Run Length(m)	5

LINIO NEON 1010 TV

Outdoor · 3-side Emitting · Field Cuttable



Order Code

Series	Temp./Color	Power	Feed Entry	Connector Wire	End Cap	Length (mm)
LN1010TV	27=2700K 30=3000K 35=3500K 40=4000K 60=6000K	010=10W	FF=Front + Front BB=Bottom + Bottom LSLS=Left Side + Left Side FC=Front + Closed FB=Front + Bottom BLS=Bottom + Left Side FRS=Front + Right Side	OW=Open wire 30cm MFC=Male & female connector 30cm	IJ=Injected end cap (IP44) *Only available for front/closed entry SEC=Silicone end cap (IP67)	Min. - 35.7mm Max. - 30000mm Cut Inc. - 35.7mm

Example: LN1010TV-30-010-FF-OW-IJ-05000

* Customizable—Contact Beamever representatives

Channels or clips

Code	Description
LN1010-SC	1m straight aluminum channel
LN1010-CL	Stainless steel clips (recommend 3 clips per meter)
LN1010-PC	1m PC channel

* For customization, please specify your demands to your Beamever representatives.

Accessories (Optional)

Code	Description
LN1010-SEC-C	Silicone closed end cap
MFC-2P-67	Male and female connectors with 30cm cable, IP67, 2 pin
ETC-2P-67-1M	Extension Male and female connectors with 1m cable, IP67, 2 pin

* Please refer to "Accessories options" for more models available.

Power supplies

Code	Description
XLG-150-24-A	PSU 24V/150W IP67, Non dimmable, White
ELG-150-24B-3Y	PSU 24V/150W IP67, 3 in 1 dimming function
ELG-150-24DA-3Y	PSU 24V/150W IP67, DALI control technology

* Please refer to "Power supplies options" for more models available.

Note

* Leave your comments or other customized demands (if any) and contact Beamever.

Feed Entry Options

Front feed entry (F)



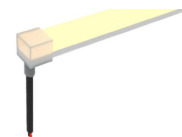
Left side feed entry (LS)



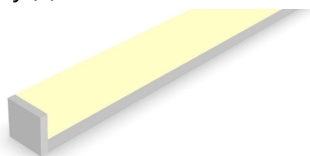
Right side feed entry (RS)



Bottom feed entry (B)



Closed feed entry (C)

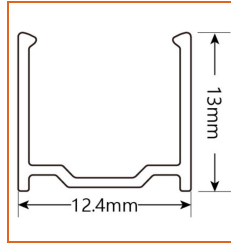
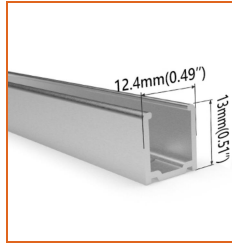
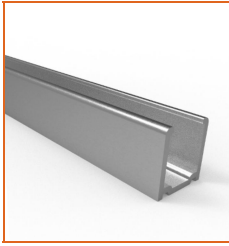


LINIO NEON 1010 TV

Outdoor · 3-side Emitting · Field Cuttable

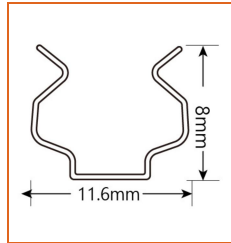
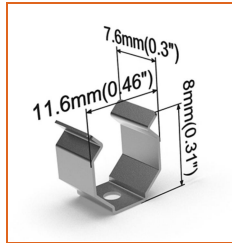
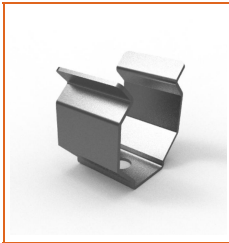


Mounting Options



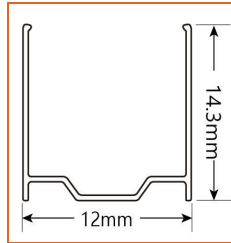
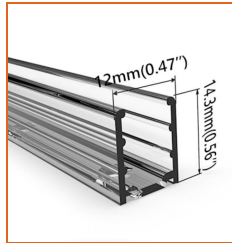
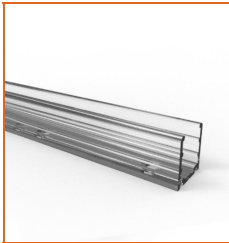
* Standard length is 1m/pcs.

Name	Straight aluminum channel
Code	LN1010-SC
Material	Aluminum
Mounting style	Surface mounted
Length	1m
Width	12.4mm
Height	13mm
Internal width	/



* Recommend use 3 mounting clips for 1m of neon.

Name	Mounting clip
Code	LN1010-CL
Material	Stainless Steel
Mounting style	Surface mounted
Length	7.6mm
Width	11.6mm
Height	8mm
Internal Width	/



* Standard length is 1m/pcs.

Name	PC channel
Code	LN1010-PC
Material	PC
Mounting style	Surface mounted
Length	1m
Width	12mm
Height	14.3mm
Internal width	/

Power Supplies Options

Code	Max Load	Input	Output	Dimming	Environment	Size
XLG-150-24-A	150W	100-305VAC	24VDC	Non-Dim	Dry/Damp/IP67	180x63x35.5mm (L x W x H)
ELG-150-24B-3Y	150W	100-305VAC	24VDC	3 in 1 dimming	Dry/Damp/IP67	219x63x35.5mm (LxWxH)
ELG-150-24DA-3Y	150W	100-305VAC	24VDC	DALI control technology	Dry/Damp/IP67	219x63x35.5mm (L x W x H)
LPV-150-24	150W	180-305VAC	24VDC	Non-Dim	Dry/Damp/IP67	148x40x30mm (L x W x H)
LRS-150-24	150W	85-132V / 170-264VAC	24VDC	Non-Dim	Dry	99x97x30mm (L x W x H)
PWM-120-24	120W	90 ~ 305V / 127 ~ 431VAC	24VDC	3 in 1 dimming	Dry/Damp/IP67	191x63x37.5mm (LxWxH)

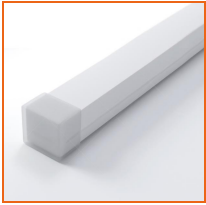
* Please refer to the spec sheet of each power supply for more detailed information

LINIO NEON 1010 TV

Outdoor · 3-side Emitting · Field Cuttable



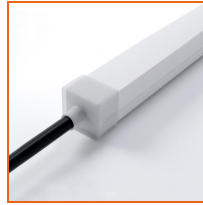
Accessories Options



Name Silicone closed end cap

Code LN1010-SEC-C

Closed silicone end cap



Name Silicone front end cap

Code LN1010-SEC-F-2P

Silicone end cap front entry with 30cm black cable, 2 pin



Name Silicone side end cap

Code LN1010-SEC-S-2P

Silicone end cap side entry with 30cm black cable, 2 pin



Name Silicone bottom end cap

Code LN1010-SEC-B-2P

Silicone end cap bottom entry with 30cm black cable, 2 pin



Name Male and female connectors

Code MFC-2P-67

Male and female connectors with 30cm white cable, 2 pin



Name Extension connectors

Code ETC-2P-67-1M

Extension Male and female connectors with 1m white cable, 2 pin



Name Extension connectors

Code ETC-2P-67-5M

Extension Male and female connectors with 5m white cable, 2 pin



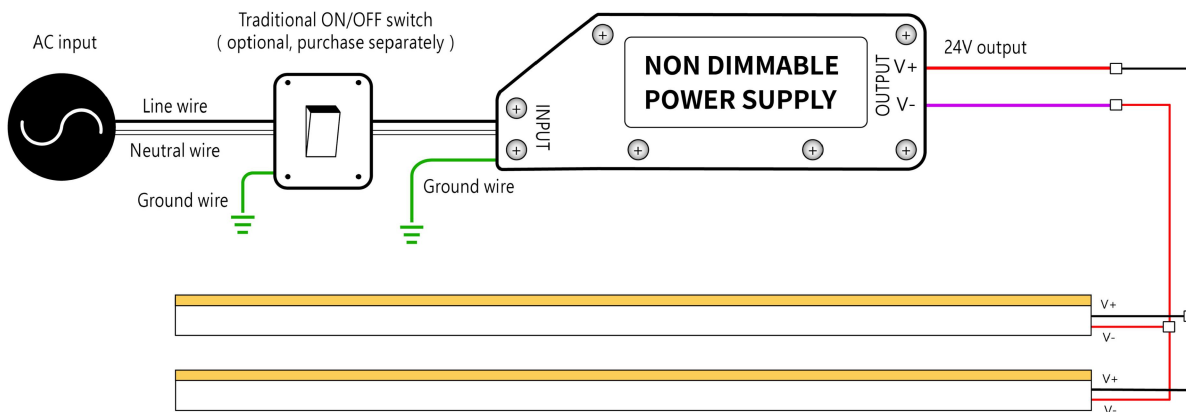
Name Silicone glue

Code SG

Silicone glue

Wiring Diagram

Non Dimmable



LINIO NEON 1010 TV

Outdoor · 3-side Emitting · Field Cuttable



Dimmable

