

LINIO NEON 0612 SV RGB

Outdoor · Horizontal Bending · Field Cuttable

Beamever

Features

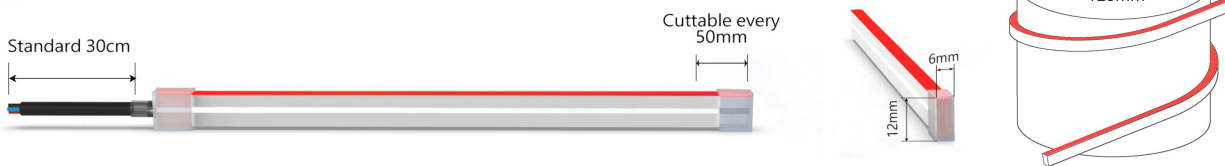
- Field cuttable & joinable
- Low voltage 24V DC
- RGB allows for versatile lighting effects
- IP67 rated, ideal for indoor and outdoor uses
- UV stable without yellowing or cracking over time
- 3 years warranty



Fixture type	
Project name	
Project phase	
Date	



Dimension & Bending



Physical

Dimensions	6mm x 12mm (width x height)
Bend Direction	Horizontal bending
Bend Diameter	120mm
Cutting Interval	50mm
Field Cuttable	Yes
Housing Material	Dow Corning
Housing Technique	Co-extrusion
Body Color	White
Finish	Glossy
Feed Entry	Front, side, bottom
Feed Length	Standard length 30mm
End Cap	Silicone
Mounting	Clips or channel (rigid)
Storage Temperature	-40~60°C (-40~140°F)
Ambient Temperature	-40~60°C (-40~140°F)@10W
Max. Production Length	30m

Performance & Electrical

Voltage	24VDC (23.5Vmin, 24.5Vmax)
Beam Angle	120°
MacAdam	3 steps
Efficacy (lm/W)	15lm/W @10W
CRI	N/A
Lumen Maintenance	> 30,000 hours
IP Rating	IP67/IP44
Resistance	UV, solvent, saltwater, flame
Dimming	PWM, 0-10V, DMX
Control Protocol	N/A
Warranty	3 years

Certification & Safety

Certifications	UL, CE, REACH, RoHS, CB
Environment	Dry, damp or wet locations

Lumen/m	10W
■ R	31
■ G	94
■ B	15
■ RGB	135
Max. Run Length(m)	5

LINIO NEON 0612 SV RGB

Outdoor · Horizontal Bending · Field Cuttable



Order Code

Series	Temp./Color	Power	Feed Entry	Connector Wire	End Cap	Length (m)
LN0612SV	RGB	010=10W	FF=Front + Front BB=Bottom + Bottom LSLS=Left Side + Left Side FC=Front + Closed FB=Front + Bottom BLS=Bottom + Left Side FRS=Front + Right Side	OW=Open wire 30cm MFC=Male & female connector 30cm	SEC=Silicone end cap (IP67)	Min. - 50mm Max. - 3000mm Cut Inc. - 50mm

Example: LN0612SV-RGB-010-FF-OW-IJ-05000

* Customizable—Contact Beamever representatives

Channels or clips

Code	Description
LN0612-SC	1m straight aluminium channel
LN0612-CL	Stainless steel clip (recommend 3 clips per meter)

* For customization, please specify your demands to your Beamever representatives.

Accessories (Optional)

Code	Description
LN0612-SEC-F	Silicone end cap front entry with 30cm 4 pin cable
LN0612-SEC-C	Silicone closed end cap
MFC-4P-67	Male and female connectors with 30cm cable, IP67, 4 pin
ETC-4P-67-1M	Extension Male & Female connectors with 1m cable, IP67, 4 pin

* Please refer to "Accessories options" for more models available.

Power supplies or controllers

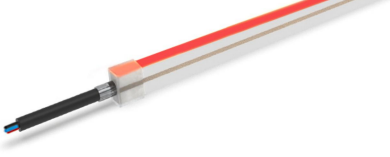


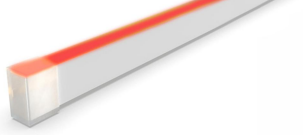

Code	Description
XLG-150-24-A	PSU 24V/150W IP67, Non dimmable, White
ELG-150-24B-3Y	PSU 24V/150W IP67, 3 in 1 dimming function
ELG-150-24DA-3Y	PSU 24V/150W IP67, DALI control technology

* Please refer to "Power supplies options" and "DMX decoders and controllers options" for more models available.

Note

* Leave your comments or other customized demands (if any) and contact Beamever.

Feed Entry Options

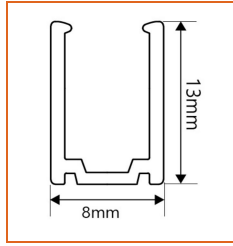
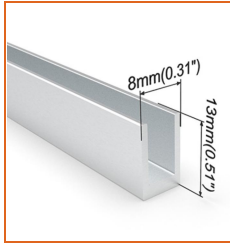
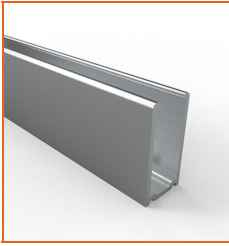
<p>Front feed entry (F)</p> 	<p>Left side feed entry (LS)</p> 
<p>Right side feed entry (RS)</p> 	<p>Closed (C)</p> 
<p>Bottom feed entry (B)</p> 	

LINIO NEON 0612 SV RGB

Outdoor · Horizontal Bending · Field Cuttable



Mounting Options



* Standard length is 1m/pcs.

Name Straight Aluminum channel

Code LN0612-SC

Material Aluminum

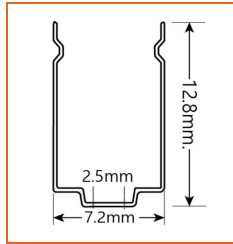
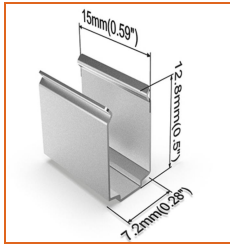
Mounting style Surface mounted

Length 1m

Width 8mm

Height 13mm

Internal width 6.5mm



* Recommend use 3 mounting clips for 1m of neon.

Name Mounting clip

Code LN0612-CL

Material Stainless Steel

Mounting style Surface mounted

Length 15mm

Width 7.2mm

Height 12.8mm

Internal Width /

Power Supplies Options

Code	Max Load	Input	Output	Dimming	Environment	Size
XLG-150-24-A	150W	100-305VAC	24VDC	Non-Dim	Dry/Damp/IP67	180x63x35.5mm (L x W x H)
ELG-150-24B-3Y	150W	100-305VAC	24VDC	3 in 1 dimming	Dry/Damp/IP67	219x63x35.5mm (LxWxH)
ELG-150-24DA-3Y	150W	100-305VAC	24VDC	DALI control technology	Dry/Damp/IP67	219x63x35.5mm (L x W x H)
LPV-150-24	150W	180-305VAC	24VDC	Non-Dim	Dry/Damp/IP67	148x40x30mm (L x W x H)
LRS-150-24	150W	85-132V / 170-264VAC	24VDC	Non-Dim	Dry	99x97x30mm (L x W x H)
PWM-120-24	120W	90 ~ 305V / 127 ~ 431VAC	24VDC	3 in 1 dimming	Dry/Damp/IP67	191x63x37.5mm (LxWxH)

* Please refer to the spec sheet of each power supply for more detailed information

DMX Decoders & Controllers & Power Repeaters Options

Type	Code	Description	Environment	Size
DMX Decoders	LT- 854-5A	4 channels output, Max. 5A current per channel, up to 480W output power	Indoor	175x42x33mm (L x W x H)
Controllers	EX4S	512 DMX channels	Indoor	86x86x36mm (L x W x H)
Controllers	M6+M3-3A	3 Channels output, Max 3A current per channel, up to 216W output power	Indoor	135x30x20mm (L x W x H)
Power Repeaters	LT-3040-5A	3 Channels output, Max 6A current per channel, up to 480W output power	Indoor	175x44x30mm (L x W x H)

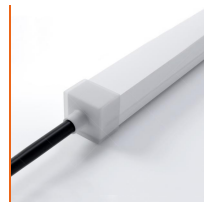
Accessories Options



Name Silicone closed end cap

Code LN0612-SEC-C

Closed silicone end cap for LINIO NEON 0612 SV



Name Silicone front end cap

Code LN0612-SEC-F-4P

Silicone end cap front entry with 30cm 4 pin cable



Name Silicone side end cap
 Code LN0612-SEC-S-4p
 Silicone end cap side entry with 30cm 4 pin cable



Name Silicone bottom end cap
 Code LN0612-SEC-B-4P
 Silicone end cap bottom entry with 30cm 4 pin cable



Name Male & female connectors
 Code MFC-4P-67
 Male and female connectors with 30cm cable, IP67, 4 pin



Name Extension connectors
 Code ETC-4P-67-1M
 Extension Male & Female connectors with 1m cable, IP67, 4 pin



Name Extension connectors
 Code ETC-4P-67-5M
 Extension Male & Female connectors with 5m cable, IP67, 4 pin



Name Silicone glue
 Code SG
 Silicone glue

Wiring Diagram

Dimmable

